



MLS 6731069 Residential

\$339,000

1,840 sq ft
2 bedrooms
3 baths

19532 Explorer Trail
Park Rapids MN 56470

Status: Pending

Description:

This 2-bedroom, 3-bathroom home is located in Country Club Estates, adjacent to Headwaters Golf Club and The Heartland Trail. It boasts a paved driveway and a double detached garage, along with hardwood floors throughout the house and a cozy gas fireplace. Additionally, there is a screened-in porch surrounded by mature pines, providing privacy and a tranquil atmosphere. With the added benefits of cul-de-sac privacy and a close proximity to town while still maintaining a country feel, this property truly offers it all!

Additional Details:

Year Built	1999
Lot Acres	1.05
Lot Dimensions	100x152x220x144
Garage Stalls	2
School District	309
Taxes	\$1,845
Taxes with Assessments	\$2,066
Tax Year	2025

Additional Features:

Fuel: Natural Gas **Heat:** Forced Air

Driving Directions:

From 34/71 in Park Rapids, East on 34 to a left on Central Ave. Follow to a right on Explorer Circle, take first right and follow to a right onto Explorer Trail to property.



Listed By:
Wolff & Simon Real Estate

Affinity Real Estate Inc. participates in the Regional Multiple Listing Service of Minnesota, Inc Broker Reciprocity (sm) program, allowing us to display other broker's listings on our website. All properties are subject to prior sale, change or withdrawal.



Call Affinity Real Estate

218-237-3333

info@affinityrealestate.com



Affinity Real Estate - 600 Park Avenue South - Park Rapids MN 56470



website: www.AffinityRealEstate.com | email: info@affinityrealestate.com | office: 218-237-3333 | fax: 218-237-3377

Affinity
REAL ESTATE INC

\$339,000
MLS 6731069 Residential
19532 Explorer Trail
Park Rapids MN 56470



website: www.AffinityRealEstate.com | email: info@affinityrealestate.com | office: 218-237-3333 | fax: 218-237-3377

Affinity
REAL ESTATE INC

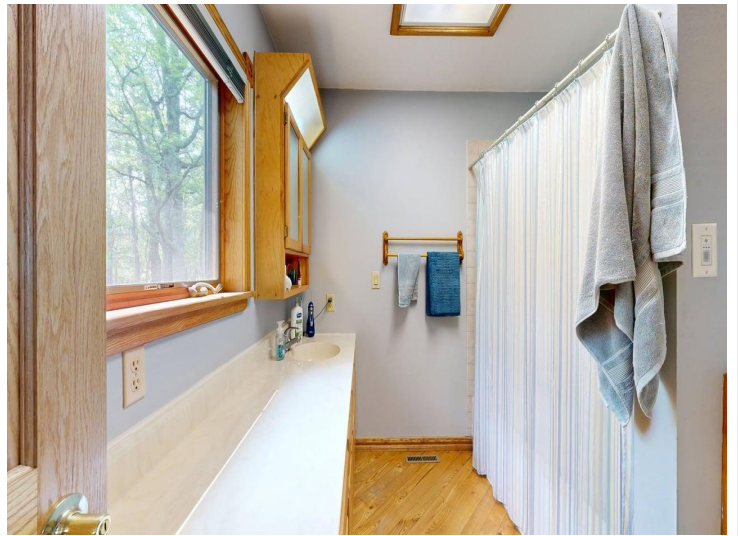
\$339,000
MLS 6731069 Residential
19532 Explorer Trail
Park Rapids MN 56470



website: www.AffinityRealEstate.com | email: info@affinityrealestate.com | office: 218-237-3333 | fax: 218-237-3377

Affinity
REAL ESTATE INC

\$339,000
MLS 6731069 Residential
19532 Explorer Trail
Park Rapids MN 56470



website: www.AffinityRealEstate.com | email: info@affinityrealestate.com | office: 218-237-3333 | fax: 218-237-3377

Affinity
REAL ESTATE INC

\$339,000
MLS 6731069 Residential
19532 Explorer Trail
Park Rapids MN 56470



website: www.AffinityRealEstate.com | email: info@affinityrealestate.com | office: 218-237-3333 | fax: 218-237-3377



\$339,000
MLS 6731069 Residential
19532 Explorer Trail
Park Rapids MN 56470