

MLS 6731097 Land

**\$160,000**

20 Acres  
Raw Land

2998 County Road 1  
Pequot Lakes MN 56472

Status: Active

#### Description:

Discover the perfect blend of seclusion and natural beauty with this remarkable 20-acre property. Nestled in a serene location, this expansive tract includes approximately 16 acres of pristine wooded land, providing privacy, hunting potential, and countless opportunities for outdoor recreation. Additionally, the 4 acres of open, rolling terrain add character and versatility, making it ideal for building your dream home, establishing trails, or simply enjoying the scenic views. Refer to the aerial images for detailed views of the property's location and topography. Conveniently accessed off County Road 1 SW, this property benefits from a paved township road, ensuring reliable access. You will appreciate being just a short drive from all the amenities Pequot Lakes has to offer. Adjacent parcels are also available for sale.

#### Additional Details:

|                        |              |
|------------------------|--------------|
| Lot Acres              | 20           |
| Lot Dimensions         | 660 x 1320   |
| School District        | 2174         |
| Taxes                  | (unreported) |
| Taxes with Assessments | (unreported) |
| Tax Year               | 2025         |

#### Additional Features:

#### Driving Directions:

From the intersection of Patriot Avenue & County Road 17 South of Pequot Lakes, take County Road 17 for 6.2 miles, turn left onto County Road 1, go 0.4 miles to the address 2298. The 20 acres will be on your right.



Listed By:  
Larson Group Real Estate/Kelle

Affinity Real Estate Inc. participates in the Regional Multiple Listing Service of Minnesota, Inc Broker Reciprocity (sm) program, allowing us to display other broker's listings on our website. All properties are subject to prior sale, change or withdrawal.



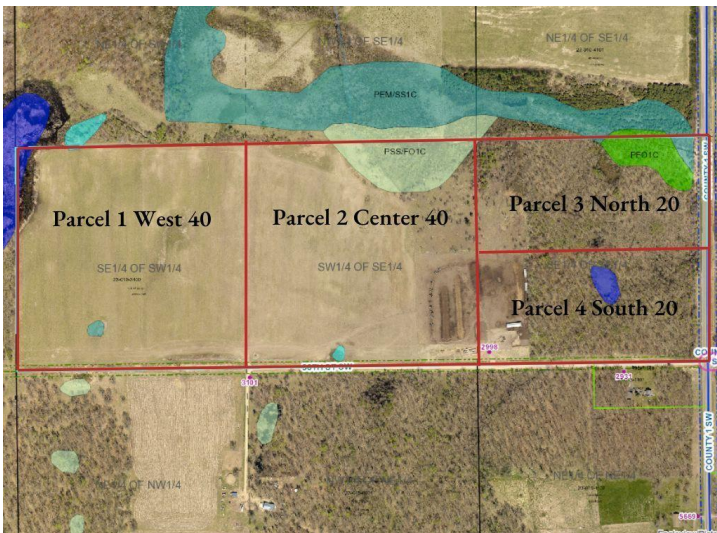
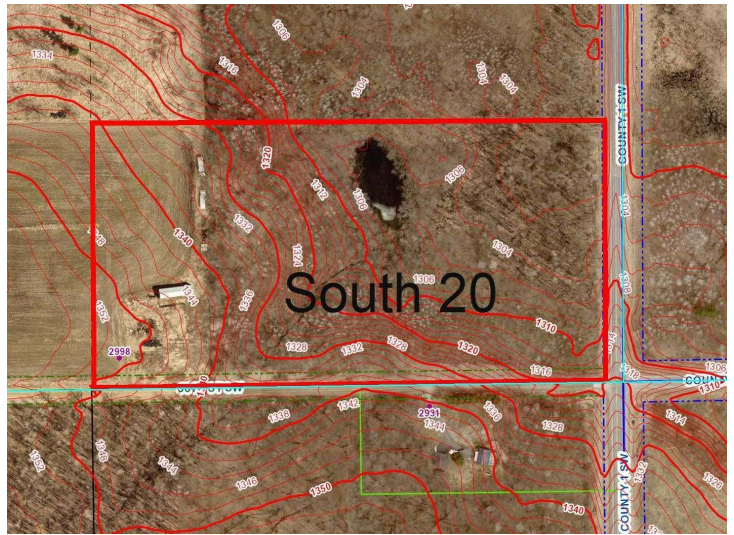
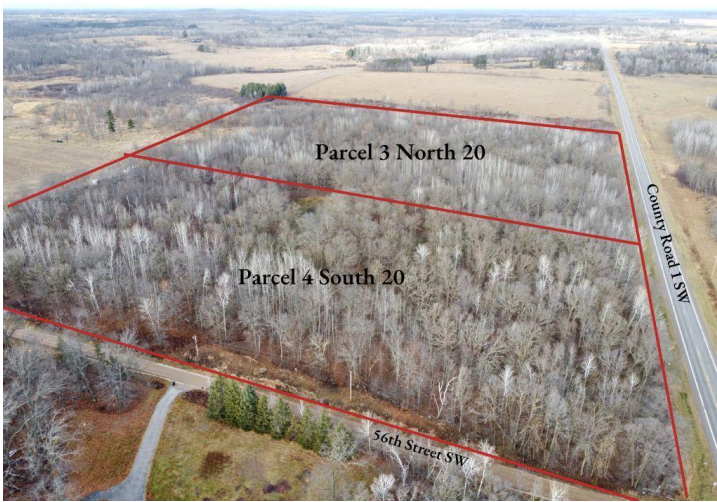
Call Affinity Real Estate

**218-237-3333**

[info@affinityrealestate.com](mailto:info@affinityrealestate.com)



Affinity Real Estate - 600 Park Avenue South - Park Rapids MN 56470



website: [www.AffinityRealEstate.com](http://www.AffinityRealEstate.com) | email: [info@affinityrealestate.com](mailto:info@affinityrealestate.com) | office: 218-237-3333 | fax: 218-237-3377



**\$160,000**  
 MLS 6731097 Land  
 2998 County Road 1  
 Pequot Lakes MN 56472