



MLS 6731150 Lake Home

\$299,900

1,232 sq ft
2 bedrooms
1 baths

21341 County 50
Park Rapids MN 56470

Waterfront: Unnamed Lake

Status: Active

Description:

This two-bedroom, one-bath home is nestled on a generous 8.77 acres of tranquil land along the picturesque Sand River with 657' of river front, offering ample privacy and natural beauty. The home features a spacious open floor plan that seamlessly connects the living, dining, and kitchen areas, creating an inviting atmosphere perfect for both relaxation and entertaining. An attached garage provides convenient parking and additional storage, while a separate detached garage offers extra space for hobbies, equipment, or vehicles. The interior has been recently updated with new flooring and a fresh coat of paint. With its combination of comfort and privacy, this home is truly move-in ready, waiting for you to make it your own!

Additional Details:

Year Built	2001
Lot Acres	8.77
Lot Dimensions	660x653x598x658
Garage Stalls	4
School District	308
Taxes	\$221
Taxes with Assessments	\$221
Tax Year	2025

Additional Features:

Basement: Finished, Full **Fuel:** Electric, Propane **Garage:** 4 **Heat:** Baseboard, Forced Air **Sewer:** Septic System Compliant - Yes **Water:** Submersible - 4 Inch **Air Conditioning:** Heat Pump

Driving Directions:

From 34/71 in Park Rapids, East on 34 to a left on County 226 (Dorset Corner, County 7). Follow to a right on County 50 to fire #21341 on right.



Listed By:
Wolff & Simon Real Estate

Affinity Real Estate Inc. participates in the Regional Multiple Listing Service of Minnesota, Inc Broker Reciprocity (sm) program, allowing us to display other broker's listings on our website. All properties are subject to prior sale, change or withdrawal.



Call Affinity Real Estate

218-237-3333

info@affinityrealestate.com



Affinity Real Estate - 600 Park Avenue South - Park Rapids MN 56470



website: www.AffinityRealEstate.com | email: info@affinityrealestate.com | office: 218-237-3333 | fax: 218-237-3377

Affinity
REAL ESTATE INC

\$299,900
MLS 6731150 Lake Home
21341 County 50
Park Rapids MN 56470



website: www.AffinityRealEstate.com | email: info@affinityrealestate.com | office: 218-237-3333 | fax: 218-237-3377



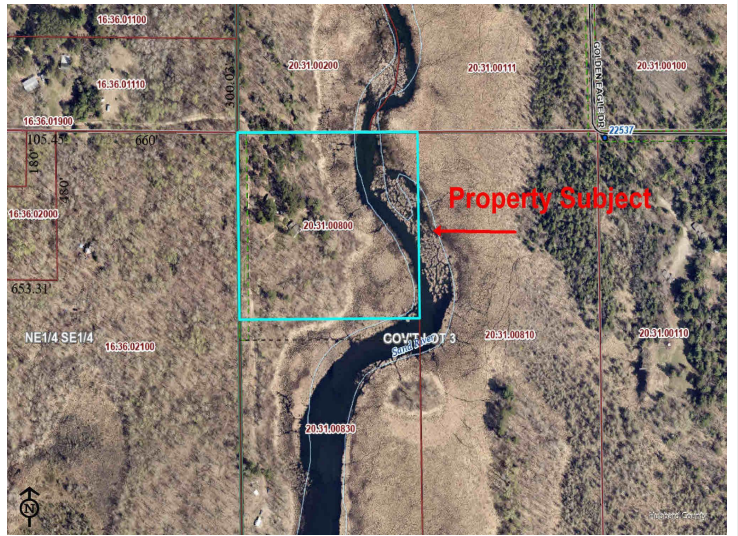
\$299,900
MLS 6731150 Lake Home
21341 County 50
Park Rapids MN 56470



website: www.AffinityRealEstate.com | email: info@affinityrealestate.com | office: 218-237-3333 | fax: 218-237-3377

Affinity
REAL ESTATE INC

\$299,900
MLS 6731150 Lake Home
21341 County 50
Park Rapids MN 56470



website: www.AffinityRealEstate.com | email: info@affinityrealestate.com | office: 218-237-3333 | fax: 218-237-3377



\$299,900
 MLS 6731150 Lake Home
 21341 County 50
 Park Rapids MN 56470

website: www.AffinityRealEstate.com | email: info@affinityrealestate.com | office: 218-237-3333 | fax:218-237-3377



\$299,900

MLS 6731150 Lake Home
21341 County 50
Park Rapids MN 56470

website: www.AffinityRealEstate.com | email: info@affinityrealestate.com | office: 218-237-3333 | fax:218-237-3377



\$299,900

MLS 6731150 Lake Home
21341 County 50
Park Rapids MN 56470