



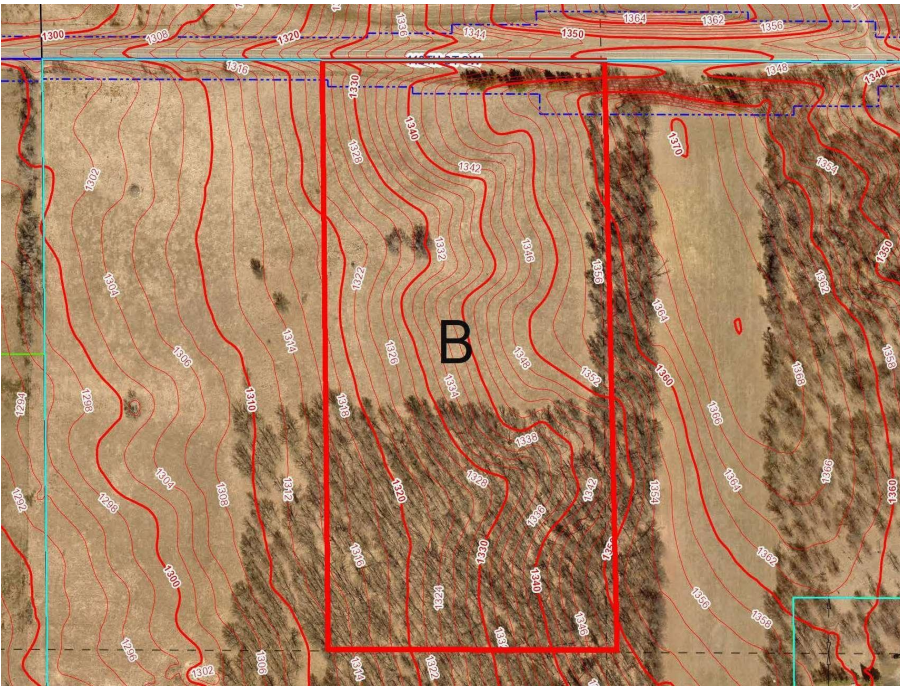
MLS 6731186 Land

\$160,000

20 Acres
Raw Land

Parcel B 112th Street
Motley MN 56466

Status: Active



Description:

Introducing 20 acres of picturesque, rolling land just 4 miles north of Motley, MN. With its westerly exposure, this property is ideal for building your new home. It offers a perfect blend of 11 acres of open, rolling meadows and 9 wooded acres. The open land is lush and suitable for agricultural use, grazing, or creating your dream retreat. Meanwhile, the wooded area provides privacy, recreational opportunities, and abundant wildlife. Access to the property is easy, with blacktop roads leading to the northeast corner. The diverse features of this land offer endless possibilities. Check the aerial imagery for a detailed view of the location and topography. Don't miss this incredible opportunity to own a stunning slice of Minnesota's countryside!

Additional Details:

Lot Acres	20
Lot Dimensions	661 x 1327 x 661 x 1324
School District	1062
Taxes	(unreported)
Taxes with Assessments	(unreported)
Tax Year	2026

Additional Features:

Driving Directions:

From the intersection of Hwy 210 and County Road 1 SW in Pillager take County Road 1 SW for 4.4 miles, turn left onto 112th St SW, go 5.4 miles, and the acreage is past the property addressed 6375. The 20 acres will be on your right.



Listed By:
Larson Group Real Estate/Kelle

Affinity Real Estate Inc. participates in the Regional Multiple Listing Service of Minnesota, Inc Broker Reciprocity (sm) program, allowing us to display other broker's listings on our website. All properties are subject to prior sale, change or withdrawal.



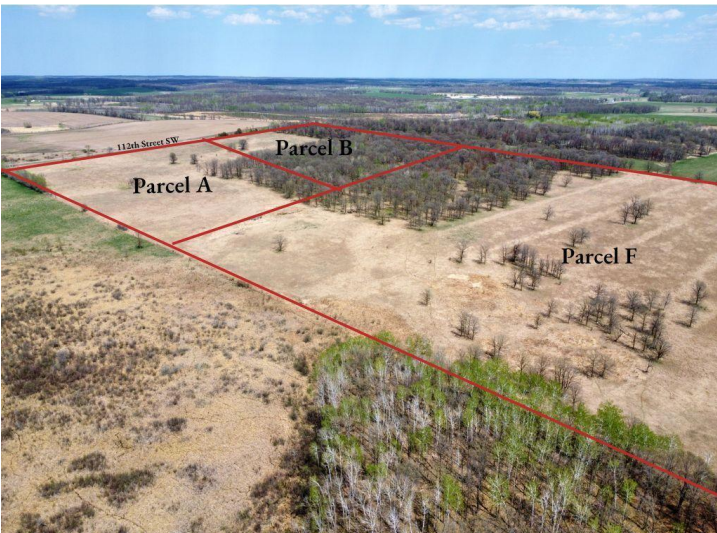
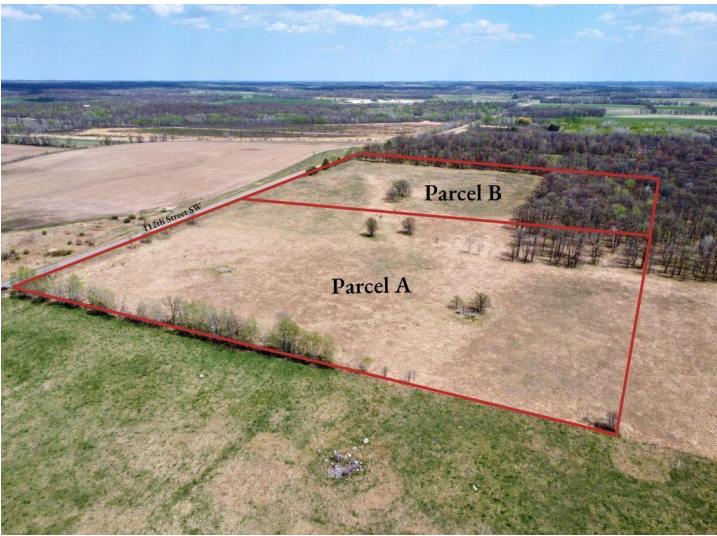
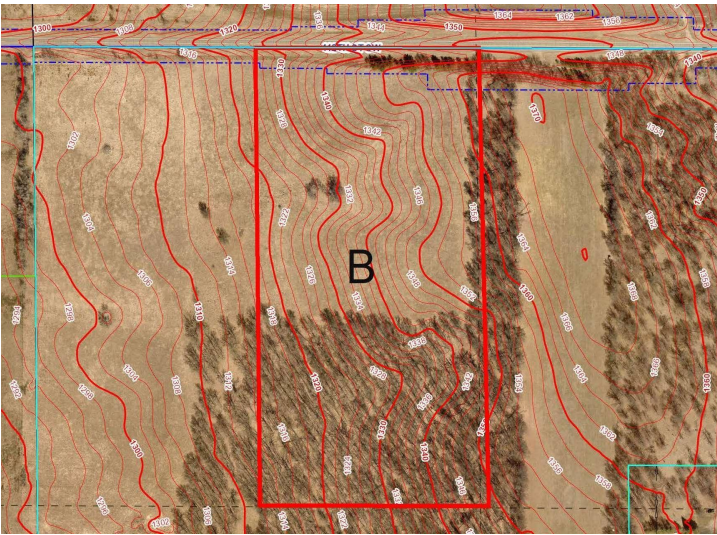
Call Affinity Real Estate

218-237-3333

info@affinityrealestate.com



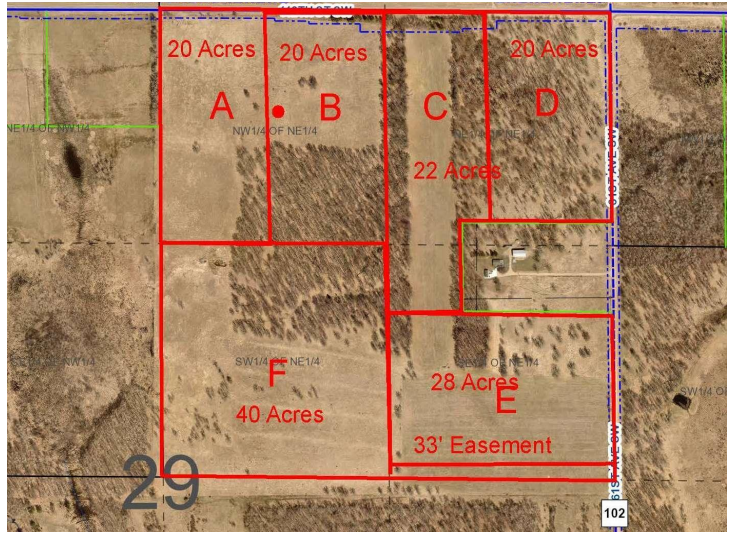
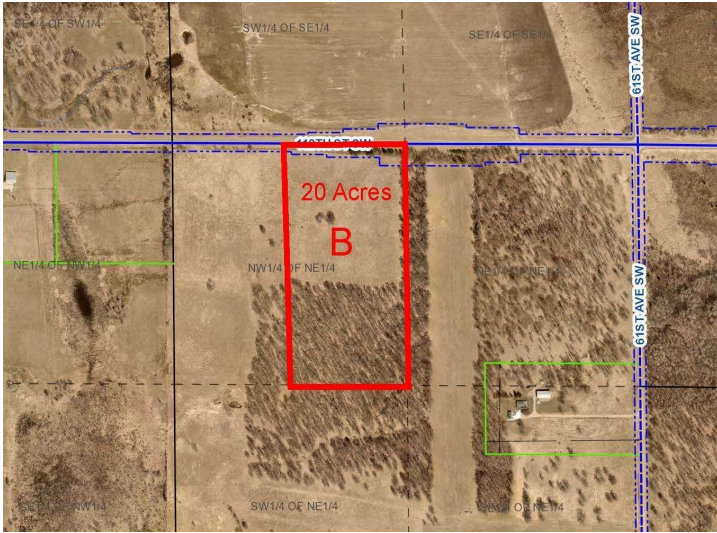
Affinity Real Estate - 600 Park Avenue South - Park Rapids MN 56470



website: www.AffinityRealEstate.com | email: info@affinityrealestate.com | office: 218-237-3333 | fax:218-237-3377



\$160,000
MLS 6731186 Land
Parcel B 112th Street
Motley MN 56466



website: www.AffinityRealEstate.com | email: info@affinityrealestate.com | office: 218-237-3333 | fax:218-237-3377



\$160,000
 MLS 6731186 Land
 Parcel B 112th Street
 Motley MN 56466