



MLS 6731323 Land

**\$160,000**

19.7 Acres

Raw Land

Parcel D 112th Street  
Motley MN 56466

Status: Active

#### Description:

Introducing 19.7 acres of picturesque rolling land located just 4 miles north of Motley, MN, perfect for building your new home. This property offers 19.7 beautifully wooded acres, providing privacy, recreational opportunities, and abundant wildlife. Easy access is guaranteed with blacktop roads leading to the northeast corner of the property. The diverse features of this land present endless possibilities. Check out the aerial imagery for a detailed view of the location and topography. Don't miss this incredible opportunity to own a stunning piece of Minnesota's countryside!

#### Additional Details:

Lot Acres	19.7
Lot Dimensions	711 x 1333 x 711 x 1205
School District	2170
Taxes	(unreported)
Taxes with Assessments	(unreported)
Tax Year	2025

#### Additional Features:

#### Driving Directions:

From the intersection of Hwy 210 and County Road 1 SW in Pillager take County Road 1 SW for 4.4 miles, turn left onto 112th St SW, go 5.6 miles, and the acreage is past the property addressed 6375. The 20 acres will be on your right.



Listed By:  
Larson Group Real Estate/Kelle

Affinity Real Estate Inc. participates in the Regional Multiple Listing Service of Minnesota, Inc Broker Reciprocity (sm) program, allowing us to display other broker's listings on our website. All properties are subject to prior sale, change or withdrawal.



**Call Affinity Real Estate**

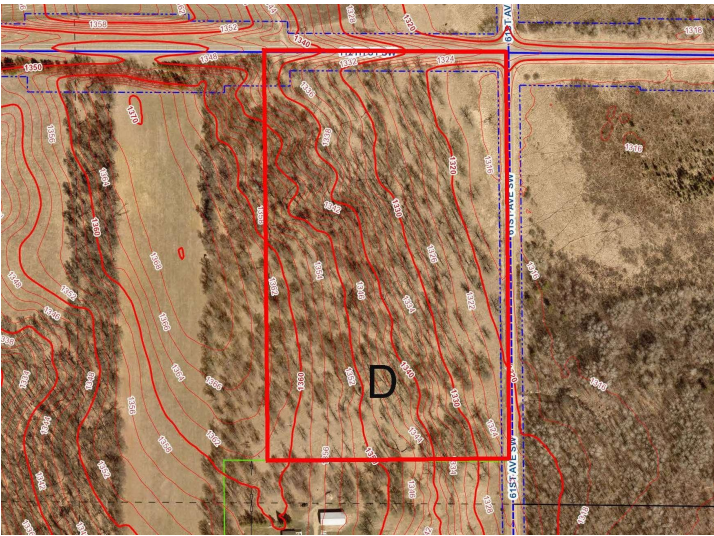
**218-237-3333**

**info@affinityrealestate.com**



**Affinity Real Estate - 600 Park Avenue South - Park Rapids MN 56470**



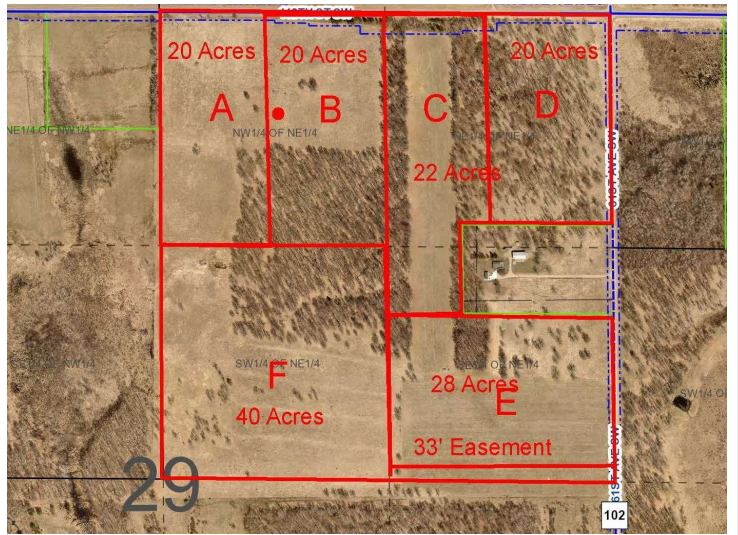
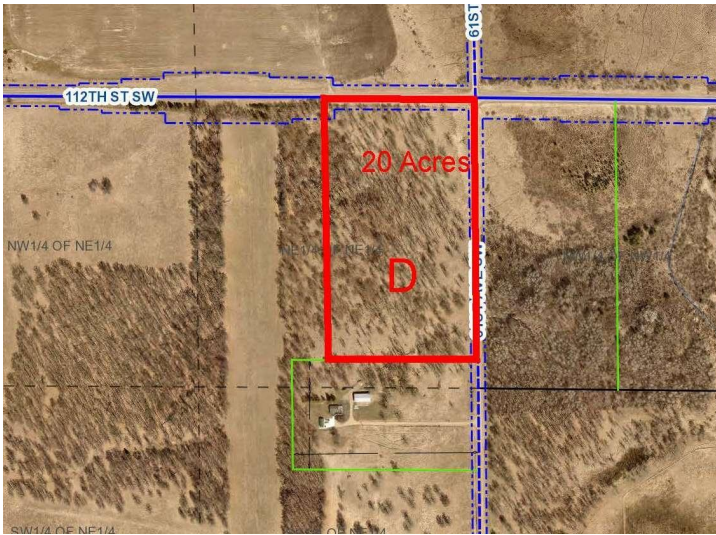


website: [www.AffinityRealEstate.com](http://www.AffinityRealEstate.com) | email: [info@affinityrealestate.com](mailto:info@affinityrealestate.com) | office: 218-237-3333 | fax: 218-237-3377



**\$160,000**  
 MLS 6731323 Land  
 Parcel D 112th Street  
 Motley MN 56466





website: [www.AffinityRealEstate.com](http://www.AffinityRealEstate.com) | email: [info@affinityrealestate.com](mailto:info@affinityrealestate.com) | office: 218-237-3333 | fax: 218-237-3377



**\$160,000**  
 MLS 6731323 Land  
 Parcel D 112th Street  
 Motley MN 56466