

MLS 6731340 Land

\$220,000

28 Acres
Raw Land

Parcel E 61st Avenue
Motley MN 56466

Status: Active

Description:

Introducing 28 acres of picturesque rolling land, just 4 miles north of Motley, MN—an ideal location for your new hobby farm and horses. This property features a perfect blend of lush open meadows and wooded areas. One part of the land is suitable for agricultural use, grazing, or building your dream retreat, while the other half is densely wooded, offering privacy, recreational opportunities, and abundant wildlife. The diverse features of this land provide endless possibilities. Check the aerial imagery for a detailed view of the location and topography. There will be a 33-foot easement on the Southerly line to provide access to the back 40 acres. Don't miss out on this incredible opportunity to own a beautiful piece of Minnesota's countryside!

Additional Details:

| | |
|------------------------|--------------|
| Lot Acres | 28 |
| Lot Dimensions | 918 x 1320 |
| School District | 2170 |
| Taxes | (unreported) |
| Taxes with Assessments | (unreported) |
| Tax Year | 2025 |

Additional Features:

Driving Directions:

From the intersection of Hwy 210 and County Road 1 SW in Pillager take County Road 1 SW, go 4.4 miles, turn left onto 112th St SW, go 5.6 miles, turn left onto 61st Ave SW, the acreage is after the address 11309.



Listed By:
Larson Group Real Estate/Kelle

Affinity Real Estate Inc. participates in the Regional Multiple Listing Service of Minnesota, Inc Broker Reciprocity (sm) program, allowing us to display other broker's listings on our website. All properties are subject to prior sale, change or withdrawal.



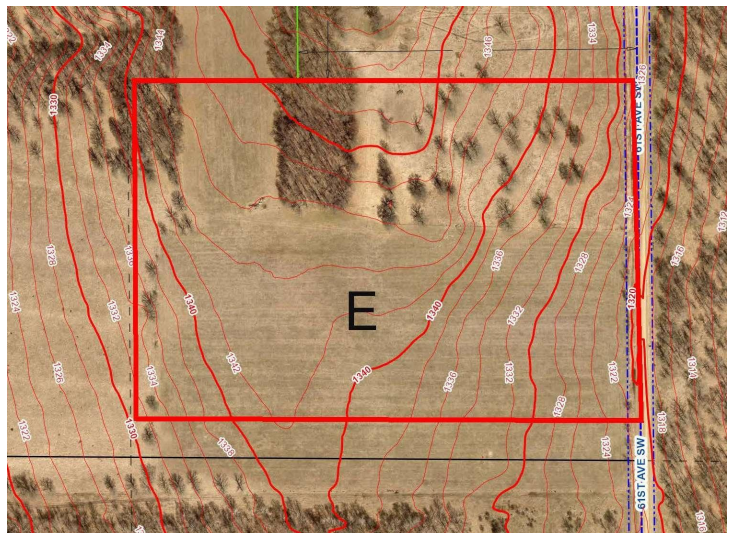
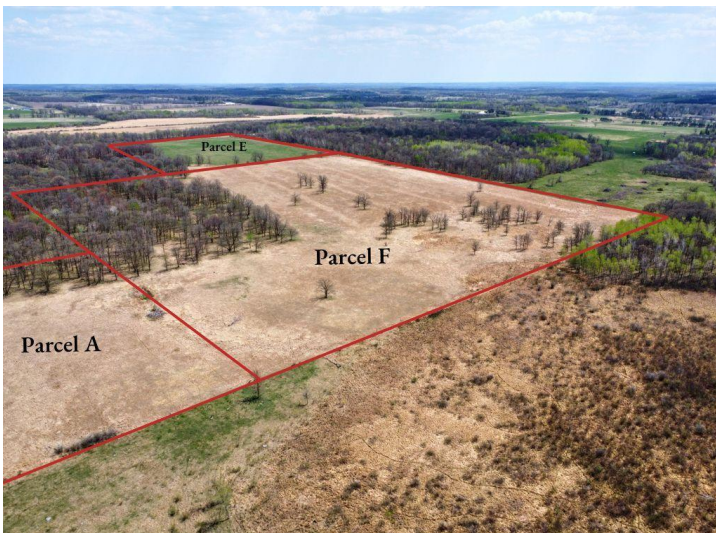
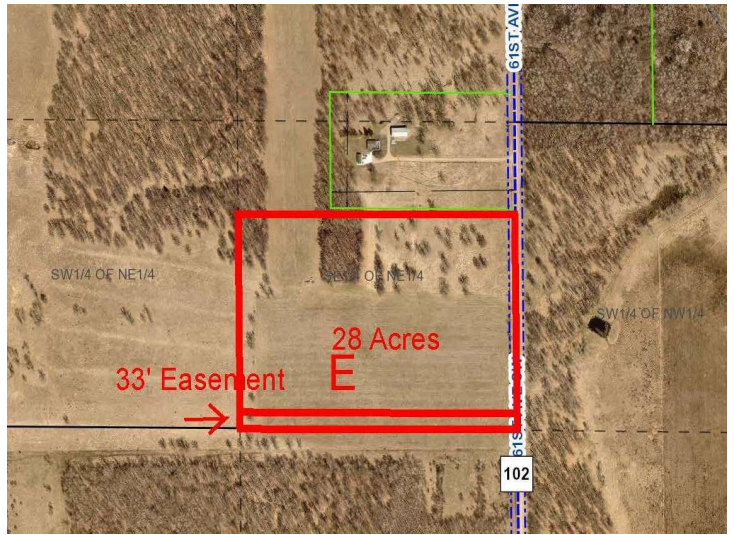
Call Affinity Real Estate

218-237-3333

info@affinityrealestate.com



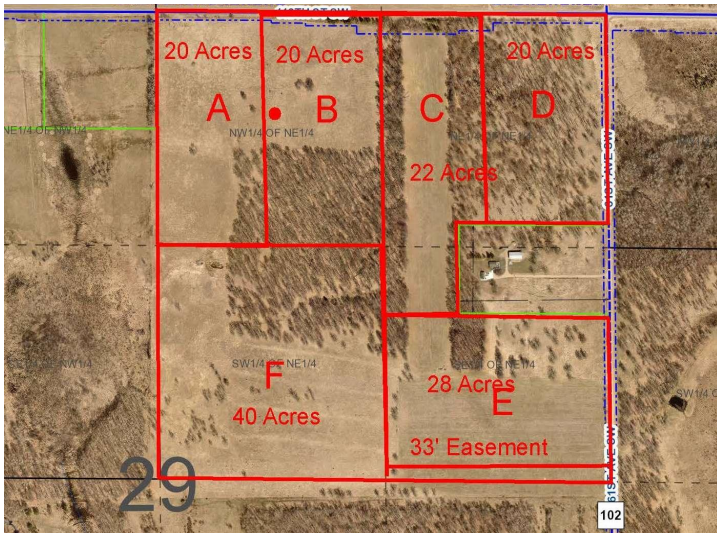
Affinity Real Estate - 600 Park Avenue South - Park Rapids MN 56470



website: www.AffinityRealEstate.com | email: info@affinityrealestate.com | office: 218-237-3333 | fax: 218-237-3377



\$220,000
 MLS 6731340 Land
 Parcel E 61st Avenue
 Motley MN 56466



website: www.AffinityRealEstate.com | email: info@affinityrealestate.com | office: 218-237-3333 | fax: 218-237-3377



\$220,000
 MLS 6731340 Land
 Parcel E 61st Avenue
 Motley MN 56466