

MLS 6731353 Land

\$240,000

40 Acres
Raw Land

Parcel F 61st Avenue
Motley MN 56466

Status: Active

Description:

Introducing 40 acres of picturesque rolling land just 4 miles north of Motley, MN, perfect for you to build your new hobby farm and have horses. This property offers a mix of 27 open rolling meadows and 13 wooded acres. Some of it is lush, open land, ideal for agricultural use, grazing, or building your dream retreat, while the other half is beautifully wooded, providing privacy, recreational opportunities, and abundant wildlife. This land's diverse features offer endless possibilities. Check aerial imagery for a detailed view of the location and topography. A 33-foot easement will provide access this parcel. Don't miss this incredible opportunity to own a stunning slice of Minnesota's countryside!

Additional Details:

Lot Acres	40
Lot Dimensions	1323 x 1327 x 1324 x 1321
School District	1062
Taxes	(unreported)
Taxes with Assessments	(unreported)
Tax Year	2026

Additional Features:

Driving Directions:

From the intersection of Hwy 210 and County Road 1 SW in Pillager take County Road 1 SW, go 4.4 miles, turn left onto 112th St SW, go 5.6 miles, turn left onto 61st Ave SW, the acreage is after the address 11309. Access to this parcel is from a 33-foot easement on the Southerly line of Parcel E.



Listed By:
Larson Group Real Estate/Kelle

Affinity Real Estate Inc. participates in the Regional Multiple Listing Service of Minnesota, Inc Broker Reciprocity (sm) program, allowing us to display other broker's listings on our website. All properties are subject to prior sale, change or withdrawal.



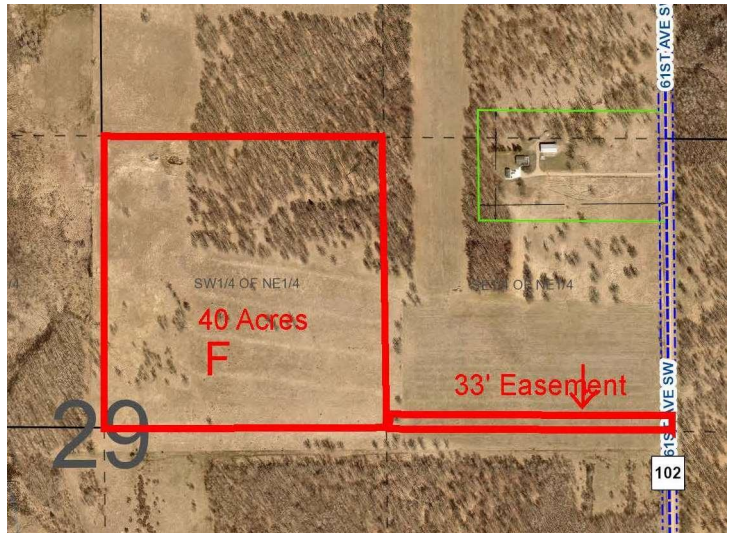
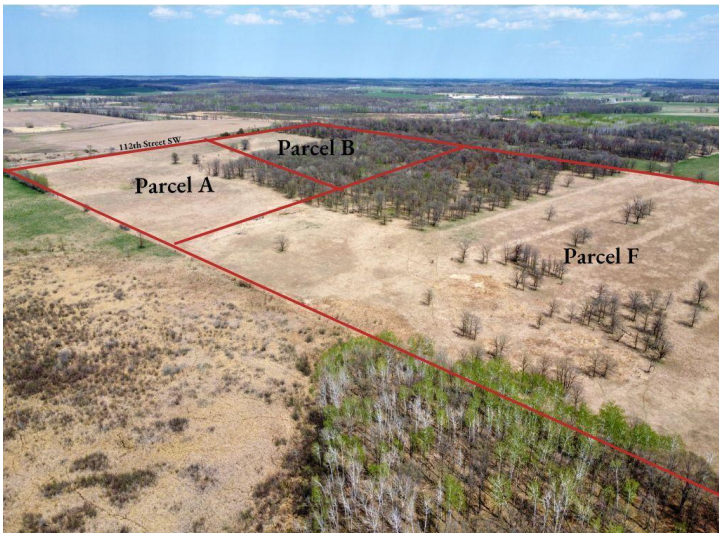
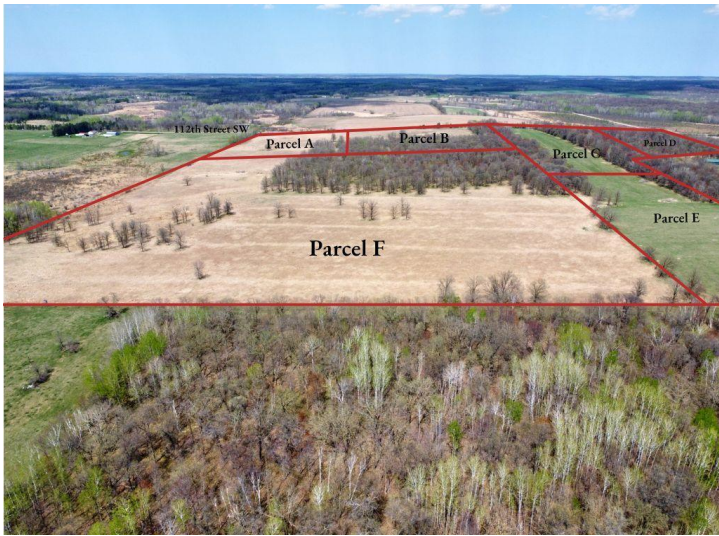
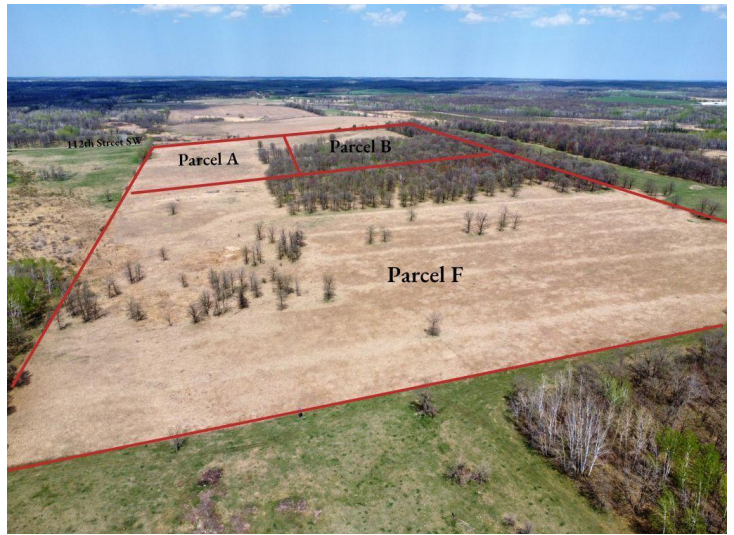
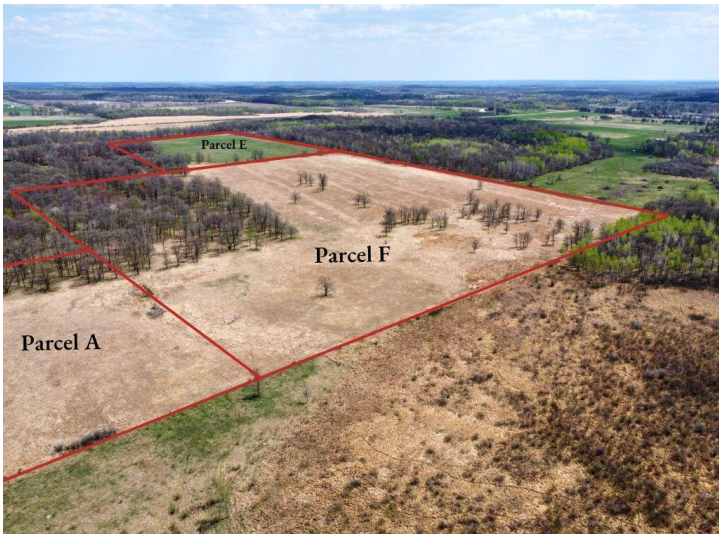
Call Affinity Real Estate

218-237-3333

info@affinityrealestate.com



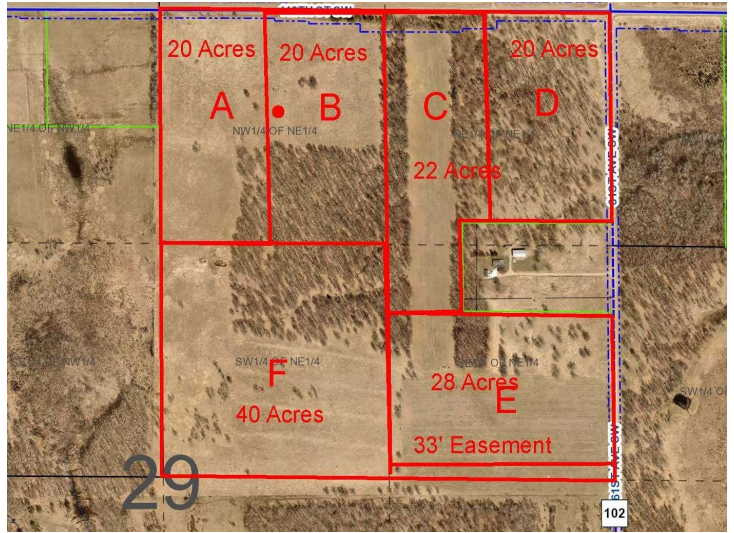
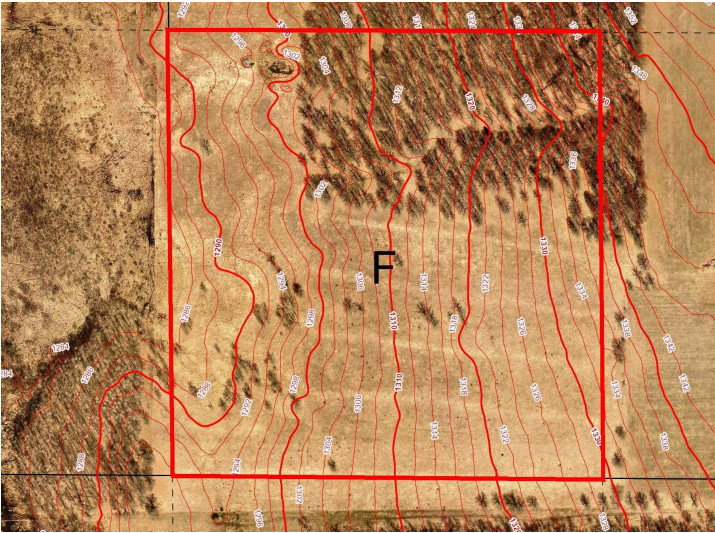
Affinity Real Estate - 600 Park Avenue South - Park Rapids MN 56470



website: www.AffinityRealEstate.com | email: info@affinityrealestate.com | office: 218-237-3333 | fax: 218-237-3377



\$240,000
 MLS 6731353 Land
 Parcel F 61st Avenue
 Motley MN 56466



website: www.AffinityRealEstate.com | email: info@affinityrealestate.com | office: 218-237-3333 | fax:218-237-3377



\$240,000
 MLS 6731353 Land
 Parcel F 61st Avenue
 Motley MN 56466