



MLS 6731366 Land

**\$240,000**

40 Acres  
Raw Land

Parcel 1 52nd Street  
Pequot Lakes MN 56472

Status: Active

#### Description:

Explore 40 acres of breathtaking and diverse terrain, featuring 22 acres of open meadows and 18 acres of wooded land with rolling hills. This property offers excellent opportunities for building your new home, complete with serene views and natural beauty. Access is convenient via 52nd St SW, a township road, and a 33-foot easement on the Southern 40 acres. This land is an ideal option for building, recreation, or investment. For detailed location and topography information, please refer to the aerial maps. Embrace the potential of this unique property!

#### Additional Details:

|                        |             |
|------------------------|-------------|
| Lot Acres              | 40          |
| Lot Dimensions         | 1320 x 1320 |
| School District        | 2174        |
| Taxes                  | \$590       |
| Taxes with Assessments | \$590       |
| Tax Year               | 2025        |

#### Additional Features:

#### Driving Directions:

From the intersection of Patriot Avenue & County Road 17 South of Pequot Lakes, take County Road 17 for 6.2 miles, turn right onto County Road 1, go 1 mile, turn left onto 52th Street SW past the address 3250. You will access the 40 acres from an easement road.



Listed By:  
Larson Group Real Estate/Kelle

Affinity Real Estate Inc. participates in the Regional Multiple Listing Service of Minnesota, Inc Broker Reciprocity (sm) program, allowing us to display other broker's listings on our website. All properties are subject to prior sale, change or withdrawal.



Call Affinity Real Estate

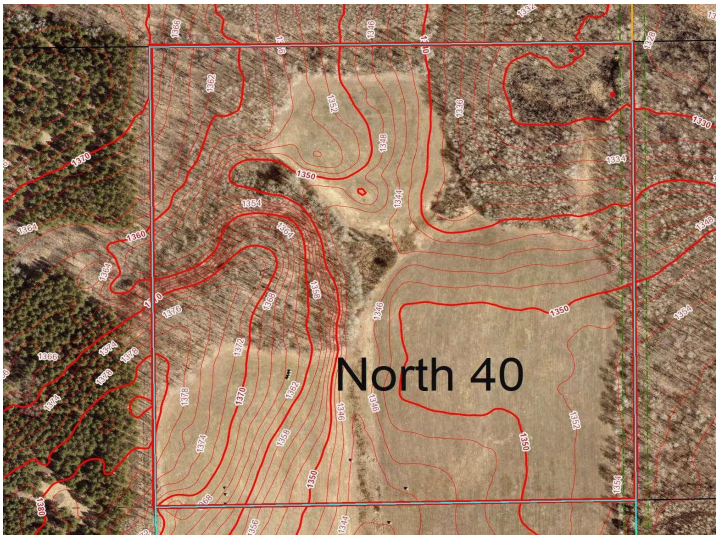
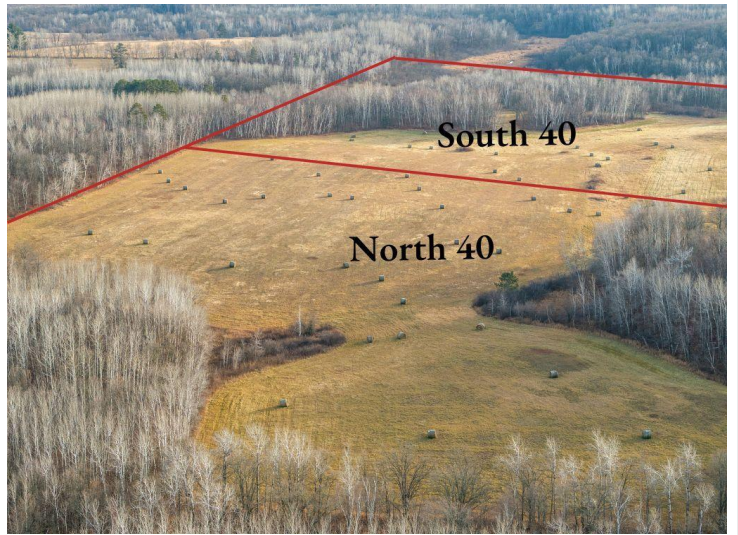
**218-237-3333**

[info@affinityrealestate.com](mailto:info@affinityrealestate.com)



Affinity Real Estate - 600 Park Avenue South - Park Rapids MN 56470





website: [www.AffinityRealEstate.com](http://www.AffinityRealEstate.com) | email: [info@affinityrealestate.com](mailto:info@affinityrealestate.com) | office: 218-237-3333 | fax: 218-237-3377



**\$240,000**  
 MLS 6731366 Land  
 Parcel 1 52nd Street  
 Pequot Lakes MN 56472