



MLS 6731390 Land

\$240,000

40 Acres
Raw Land

Parcel 2 52nd Street
Pequot Lakes MN 56472

Status: Active

Description:

Explore 40 acres of breathtaking and diverse terrain, featuring 16 acres of open meadows and 24 acres of wooded land with rolling hills. This property offers excellent opportunities for building your new home, complete with serene views and natural beauty. Access is convenient via 52nd St SW, a township road. There is a 33-foot easement on this parcel to provide access to the Westerly neighbor and the Northern 40 acres. This land is an ideal option for building, recreation, or investment. For detailed location and topography information, please refer to the aerial maps. Embrace the potential of this unique property!

Additional Details:

Lot Acres	40
Lot Dimensions	1320 x 1320
School District	2174
Taxes	\$476
Taxes with Assessments	\$476
Tax Year	2025

Additional Features:

Driving Directions:

From the intersection of Patriot Avenue & County Road 17 South of Pequot Lakes, take County Road 17 for 6.2 miles, turn right onto County Road 1, go 1 mile, turn left onto 52th Street SW past the address 3250. The 40 acres will be on your right.



Listed By:
Larson Group Real Estate/Kelle

Affinity Real Estate Inc. participates in the Regional Multiple Listing Service of Minnesota, Inc Broker Reciprocity (sm) program, allowing us to display other broker's listings on our website. All properties are subject to prior sale, change or withdrawal.



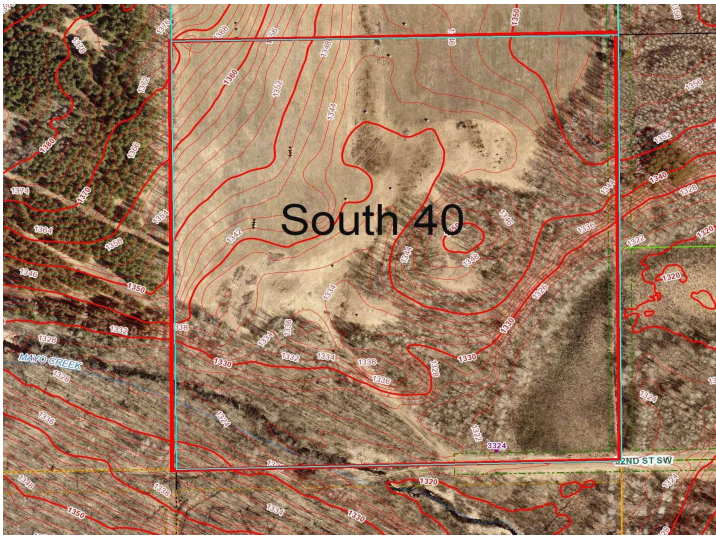
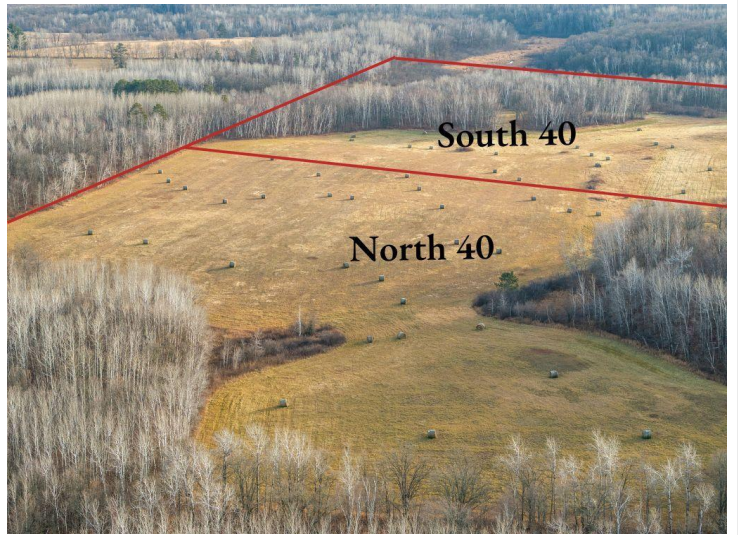
Call Affinity Real Estate

218-237-3333

info@affinityrealestate.com



Affinity Real Estate - 600 Park Avenue South - Park Rapids MN 56470



website: www.AffinityRealEstate.com | email: info@affinityrealestate.com | office: 218-237-3333 | fax: 218-237-3377



\$240,000
 MLS 6731390 Land
 Parcel 2 52nd Street
 Pequot Lakes MN 56472