



MLS 6731402 Residential

**\$224,600**

2,400 sq ft  
3 bedrooms  
2 baths

806 Central Avenue  
Park Rapids MN 56470

Status: Active

**Description:**

This three-bedroom, two-bathroom home is conveniently located near the Heartland Trail and Headwaters Golf Course. It features a spacious living area, fireplace, main-level laundry, plenty of storage and partially finished lower level. Complete with detached workshop all set on a spacious lot with fence in back yard convenient to town. Call now to view this home!

**Additional Details:**

Year Built	1958
Lot Acres	0.76
Lot Dimensions	175x219x177x219
School District	309
Taxes	\$3,425
Taxes with Assessments	\$3,646
Tax Year	2025

**Additional Features:**

**Basement:** Block, Partially Finished **Fuel:** Propane **Heat:** Forced Air **Sewer:** Tank with Drainage Field **Water:** None **Air Conditioning:** None

**Driving Directions:**

From 34/71 in Park Rapids, East on 34 to a left on Central Ave N to property on right.



Listed By:  
Wolff & Simon Real Estate

Affinity Real Estate Inc. participates in the Regional Multiple Listing Service of Minnesota, Inc Broker Reciprocity (sm) program, allowing us to display other broker's listings on our website. All properties are subject to prior sale, change or withdrawal.



**Call Affinity Real Estate**

**218-237-3333**

**info@affinityrealestate.com**



**Affinity Real Estate - 600 Park Avenue South - Park Rapids MN 56470**



website: [www.AffinityRealEstate.com](http://www.AffinityRealEstate.com) | email: [info@affinityrealestate.com](mailto:info@affinityrealestate.com) | office: 218-237-3333 | fax: 218-237-3377

**Affinity**  
REAL ESTATE INC

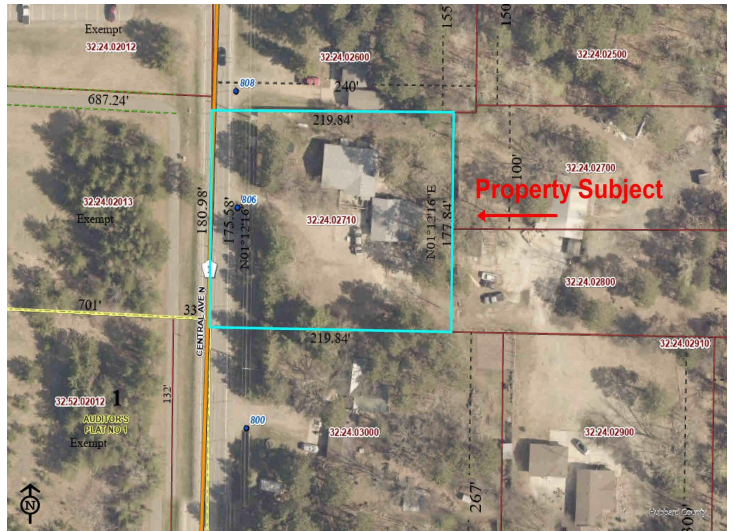
**\$224,600**  
MLS 6731402 Residential  
806 Central Avenue  
Park Rapids MN 56470



website: [www.AffinityRealEstate.com](http://www.AffinityRealEstate.com) | email: [info@affinityrealestate.com](mailto:info@affinityrealestate.com) | office: 218-237-3333 | fax: 218-237-3377



**\$224,600**  
MLS 6731402 Residential  
806 Central Avenue  
Park Rapids MN 56470



website: [www.AffinityRealEstate.com](http://www.AffinityRealEstate.com) | email: [info@affinityrealestate.com](mailto:info@affinityrealestate.com) | office: 218-237-3333 | fax: 218-237-3377



**\$224,600**  
 MLS 6731402 Residential  
 806 Central Avenue  
 Park Rapids MN 56470