



MLS 6731442 Land

**\$57,900**

0.07 Acres  
Finished Lot(s)

30821 Plumwood Trail  
Pequot Lakes MN 56472

Status: Active

#### Description:

Great lot with 2000 Breckenridge Destination Trailer with the ability to sleep 6 and an 8x10 storage shed with a porch. Could be converted to Minnesota Room. Prime location right across from Comfort Station one and the pool. Enjoy all the amenities White Birch has to offer. Boat and Golf Cart are not included. Samsung TV is also not included but everything else in the trailer stays including the dishes.

#### Additional Details:

Lot Acres	0.07
Lot Dimensions	46x92x48x80
School District	186
Taxes	\$256
Taxes with Assessments	\$256
Tax Year	2025

#### Additional Features:

#### Driving Directions:

From County Rd 11, turn south on Ranchette to White Birch Cluster one gate. Once inside gate, stay on White Birch way . Take second right onto Plumwood Trail. Camper will be the second camper in the second driveway to the left.



Listed By:  
Coldwell Banker Realty

Affinity Real Estate Inc. participates in the Regional Multiple Listing Service of Minnesota, Inc Broker Reciprocity (sm) program, allowing us to display other broker's listings on our website. All properties are subject to prior sale, change or withdrawal.



Call Affinity Real Estate

**218-237-3333**

[info@affinityrealestate.com](mailto:info@affinityrealestate.com)



Affinity Real Estate - 600 Park Avenue South - Park Rapids MN 56470



website: [www.AffinityRealEstate.com](http://www.AffinityRealEstate.com) | email: [info@affinityrealestate.com](mailto:info@affinityrealestate.com) | office: 218-237-3333 | fax: 218-237-3377



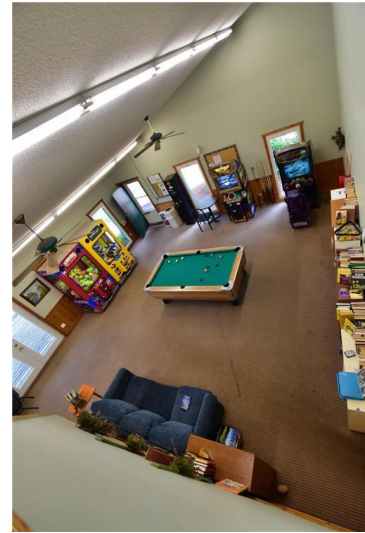
**\$57,900**  
 MLS 6731442 Land  
 30821 Plumwood Trail  
 Pequot Lakes MN 56472



website: [www.AffinityRealEstate.com](http://www.AffinityRealEstate.com) | email: [info@affinityrealestate.com](mailto:info@affinityrealestate.com) | office: 218-237-3333 | fax: 218-237-3377



**\$57,900**  
 MLS 6731442 Land  
 30821 Plumwood Trail  
 Pequot Lakes MN 56472



website: [www.AffinityRealEstate.com](http://www.AffinityRealEstate.com) | email: [info@affinityrealestate.com](mailto:info@affinityrealestate.com) | office: 218-237-3333 | fax: 218-237-3377



**\$57,900**  
 MLS 6731442 Land  
 30821 Plumwood Trail  
 Pequot Lakes MN 56472



website: [www.AffinityRealEstate.com](http://www.AffinityRealEstate.com) | email: [info@affinityrealestate.com](mailto:info@affinityrealestate.com) | office: 218-237-3333 | fax: 218-237-3377



**\$57,900**  
MLS 6731442 Land  
30821 Plumwood Trail  
Pequot Lakes MN 56472