



MLS 6731443 Residential

\$215,000

1,120 sq ft
2 bedrooms
1 baths

420 14th Street
Brainerd MN 56401

Status: Pending

Description:

Beautiful, clean home in quiet Brainerd, built in 2015. Well maintained home with accessible hallways, roll-in shower, wide doorways. 2 bedroom, 1 bathroom. Eat in kitchen. Open living room, dining and kitchen - all main floor. 1 car attached garage. Well kept lawn with flower beds. Convenient location with shops and entertainment nearby.

Additional Details:

Year Built	2015
Lot Acres	0.1
Lot Dimensions	90 x 50
Garage Stalls	1
School District	181
Taxes	\$2,124
Taxes with Assessments	\$2,124
Tax Year	2024

Additional Features:

Basement: None **Fuel:** Electric, Natural Gas **Garage:** 1 **Heat:** Forced Air **Sewer:** City Sewer/Connected **Water:** City Water/Connected **Air Conditioning:** Central Air

Driving Directions:

State Highway 371 north to Industrial Park Road. East to 13th Street SE. North to Norwood Street. East to 14th Street SE to Home.



Listed By:
EXP Realty

Affinity Real Estate Inc. participates in the Regional Multiple Listing Service of Minnesota, Inc Broker Reciprocity (sm) program, allowing us to display other broker's listings on our website. All properties are subject to prior sale, change or withdrawal.



Call Affinity Real Estate

218-237-3333

info@affinityrealestate.com



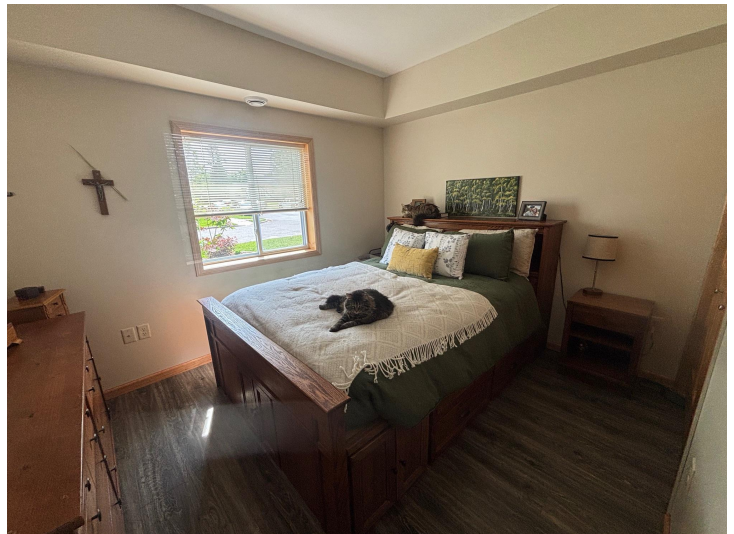
Affinity Real Estate - 600 Park Avenue South - Park Rapids MN 56470



website: www.AffinityRealEstate.com | email: info@affinityrealestate.com | office: 218-237-3333 | fax: 218-237-3377

Affinity
REAL ESTATE INC

\$215,000
MLS 6731443 Residential
420 14th Street
Brainerd MN 56401



website: www.AffinityRealEstate.com | email: info@affinityrealestate.com | office: 218-237-3333 | fax: 218-237-3377



\$215,000
MLS 6731443 Residential
420 14th Street
Brainerd MN 56401

website: www.AffinityRealEstate.com | email: info@affinityrealestate.com | office: 218-237-3333 | fax:218-237-3377



\$215,000
MLS 6731443 Residential
420 14th Street
Brainerd MN 56401

website: www.AffinityRealEstate.com | email: info@affinityrealestate.com | office: 218-237-3333 | fax:218-237-3377



\$215,000
MLS 6731443 Residential
420 14th Street
Brainerd MN 56401