

MLS 6731460 Land

**\$195,000**

25 Acres  
Raw Land

Parcel B 48th Street  
Pequot Lakes MN 56472

Status: Active

#### Description:

Explore 25 acres of beautiful and diverse terrain that includes a mix of 8 open meadows and 17 wooded areas with rolling hills. This property features multiple excellent building sites and offers access from a paved township road, 48th Street SW. This property presents a prime opportunity for building, recreation, or investment. For detailed information on the location and topography, please refer to the aerial maps. Embrace the potential of this unique piece of land!

#### Additional Details:

Lot Acres	25
Lot Dimensions	660 x 1638
School District	2174
Taxes	(unreported)
Taxes with Assessments	(unreported)
Tax Year	2025

#### Additional Features:

#### Driving Directions:

From the intersection of Patriot Avenue & County Road 17 South of Pequot Lakes, take County Road 17 for 6.2 miles, turn right onto County Road 1, go 2 miles, turn left onto 48th Street SW to the address 3534. The 25 acres will be across from the address on your left.



Listed By:  
Larson Group Real Estate/Kelle

Affinity Real Estate Inc. participates in the Regional Multiple Listing Service of Minnesota, Inc Broker Reciprocity (sm) program, allowing us to display other broker's listings on our website. All properties are subject to prior sale, change or withdrawal.



Call Affinity Real Estate

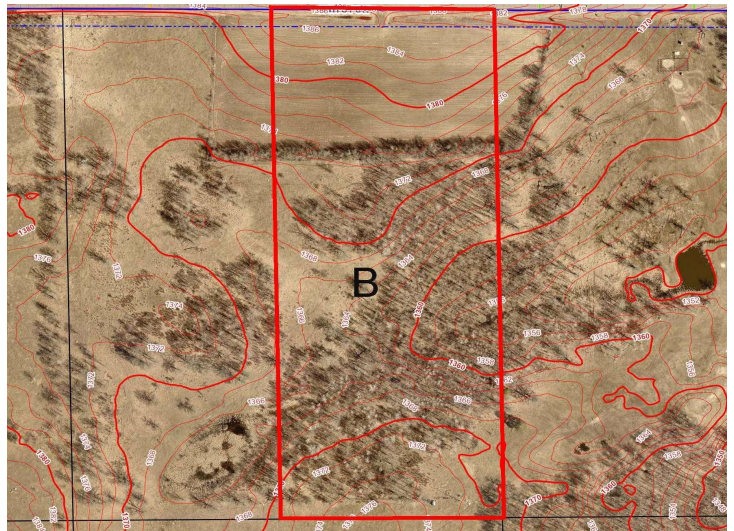
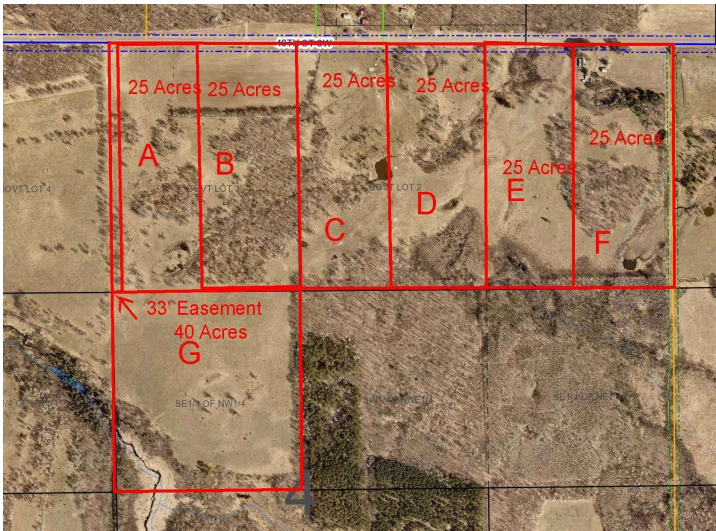
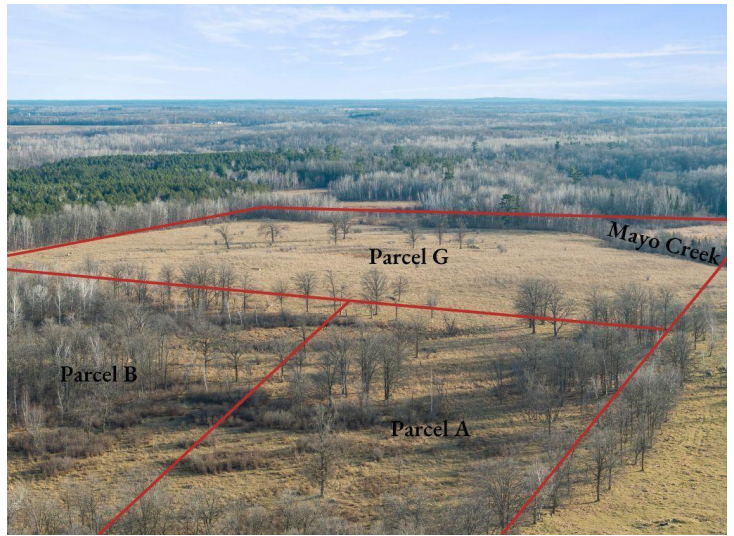
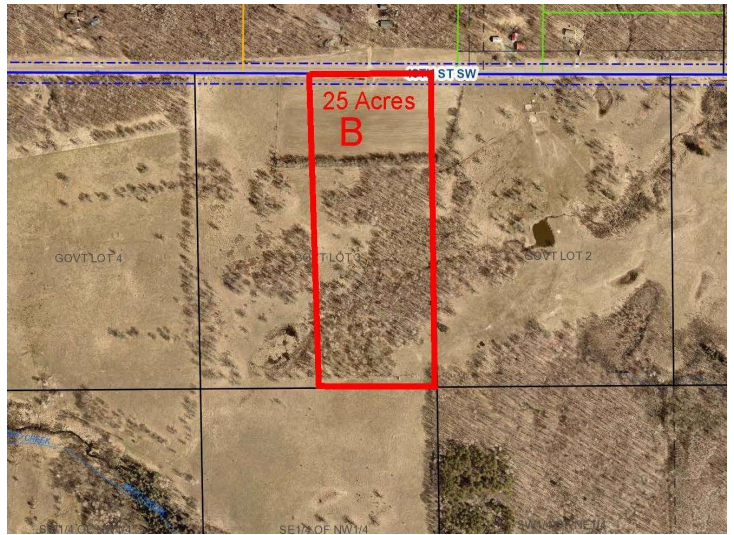
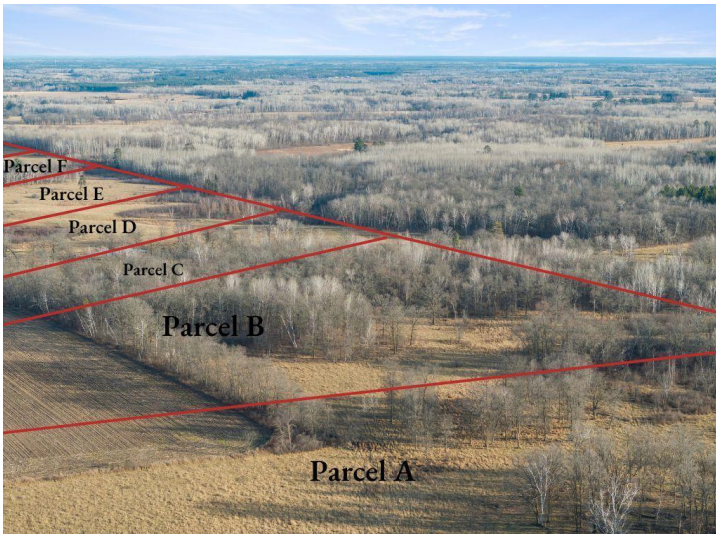
**218-237-3333**

[info@affinityrealestate.com](mailto:info@affinityrealestate.com)



Affinity Real Estate - 600 Park Avenue South - Park Rapids MN 56470



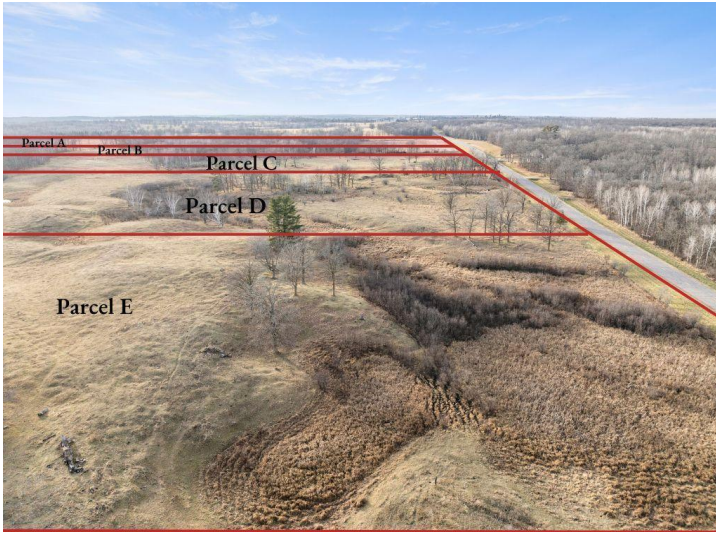


website: [www.AffinityRealEstate.com](http://www.AffinityRealEstate.com) | email: [info@affinityrealestate.com](mailto:info@affinityrealestate.com) | office: 218-237-3333 | fax: 218-237-3377



**\$195,000**  
 MLS 6731460 Land  
 Parcel B 48th Street  
 Pequot Lakes MN 56472





website: [www.AffinityRealEstate.com](http://www.AffinityRealEstate.com) | email: [info@affinityrealestate.com](mailto:info@affinityrealestate.com) | office: 218-237-3333 | fax:218-237-3377



**\$195,000**  
MLS 6731460 Land  
Parcel B 48th Street  
Pequot Lakes MN 56472