



MLS 6731611 Land

**\$95,000**

19.56 Acres  
Raw Land

TBD County Road 157  
Remer MN 56672

Status: Active

**Description:**

Escape to your own private 20-acre retreat just north of Longville, located in the heart of Minnesota's premier lakes and recreation country. This beautifully wooded property backs up to a large tract of public land to the east, offering access to hunting, hiking, and exploring right out your backdoor. Located on a maintained county road, this ideal parcel is perfectly positioned for your future barndominium, year-round home, or hunting base camp. With easy trail access for the side-by-side riding and snowmobiling, outdoor adventure awaits in every season. Surrounded by natural beauty and conveniently situated between Leech and Boy Lakes-two of Minnesota's top walleye destinations-this is a rare opportunity to own land that truly has it all.

**Additional Details:**

Lot Acres	19.56
Lot Dimensions	640 x 1320 x 640 x 1320
School District	118
Taxes	\$202
Taxes with Assessments	\$202
Tax Year	2025

**Additional Features:**

**Driving Directions:**

From Longville north on 84, continue north on highway 8, right on 157, immediate right to stay on 157, go approximately 300 yards to the property on your left.



Listed By:  
Bill Hansen Realty/Longville

Affinity Real Estate Inc. participates in the Regional Multiple Listing Service of Minnesota, Inc Broker Reciprocity (sm) program, allowing us to display other broker's listings on our website. All properties are subject to prior sale, change or withdrawal.



**Call Affinity Real Estate**

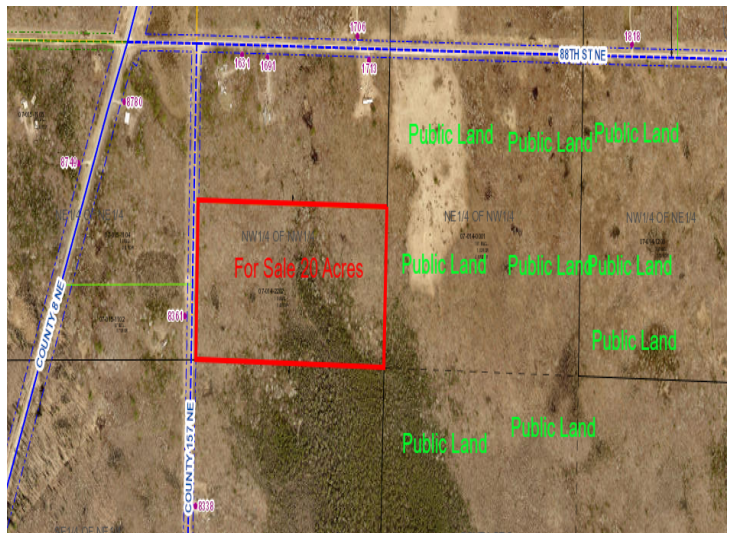
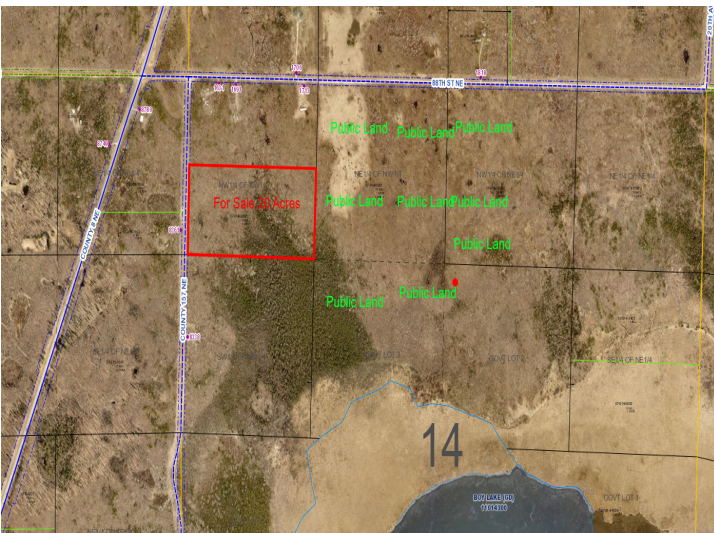
**218-237-3333**

**info@affinityrealestate.com**



**Affinity Real Estate - 600 Park Avenue South - Park Rapids MN 56470**





website: [www.AffinityRealEstate.com](http://www.AffinityRealEstate.com) | email: [info@affinityrealestate.com](mailto:info@affinityrealestate.com) | office: 218-237-3333 | fax: 218-237-3377



**\$95,000**  
 MLS 6731611 Land  
 TBD County Road 157  
 Remer MN 56672



website: [www.AffinityRealEstate.com](http://www.AffinityRealEstate.com) | email: [info@affinityrealestate.com](mailto:info@affinityrealestate.com) | office: 218-237-3333 | fax:218-237-3377



**\$95,000**

MLS 6731611 Land  
TBD County Road 157  
Remer MN 56672

website: [www.AffinityRealEstate.com](http://www.AffinityRealEstate.com) | email: [info@affinityrealestate.com](mailto:info@affinityrealestate.com) | office: 218-237-3333 | fax:218-237-3377



**\$95,000**

MLS 6731611 Land  
TBD County Road 157  
Remer MN 56672