



MLS 6731673 Commercial

**\$3**

(1 North) 1320 Northern Pacific  
Road  
Brainerd MN 56401

Status: Active

**Description:**

Lease space available in popular Northern Pacific Center! Located right in the heart of central Minnesota, this large industrial property features 13,500 square feet of space with an overhead garage door (10' wide x 17'2 high) and a ceiling height of 19'8. Heat, city sewer and city water are available. Lease for \$3.00 per SF plus \$1.00 per SF CAM, based on a 5-year minimum lease.

**Additional Details:**

Year Built	1881
Lot Acres	45.81
Lot Dimensions	687 x 3000 x 700 x 2930 x Irr
Garage Stalls	10
School District	181
Taxes	\$26,481
Taxes with Assessments	\$26,506
Tax Year	2025

**Additional Features:**

**Fuel:** Natural Gas **Heat:** None

**Driving Directions:**

From the intersection of Mill Avenue and Highway 210 in Brainerd, go west on Highway 210, then turn left (south) on County Road 45 (13th St. SE). Turn left onto Northern Pacific Road and follow to 1320.



Listed By:  
Larson Group Real Estate/Kelle

Affinity Real Estate Inc. participates in the Regional Multiple Listing Service of Minnesota, Inc Broker Reciprocity (sm) program, allowing us to display other broker's listings on our website. All properties are subject to prior sale, change or withdrawal.



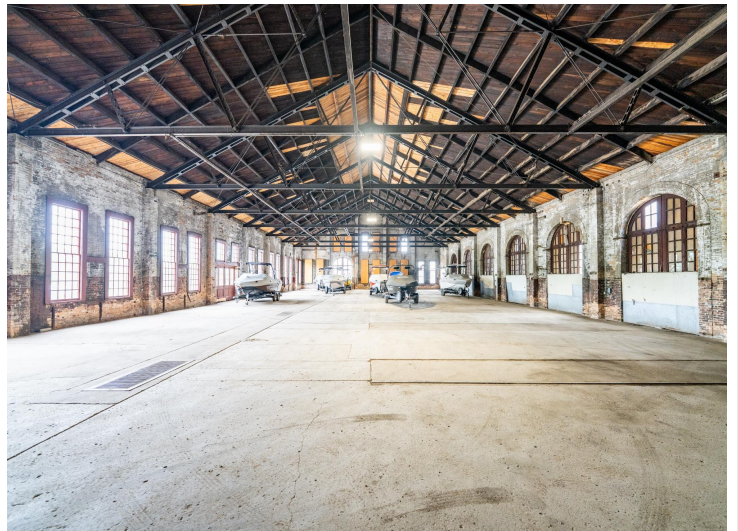
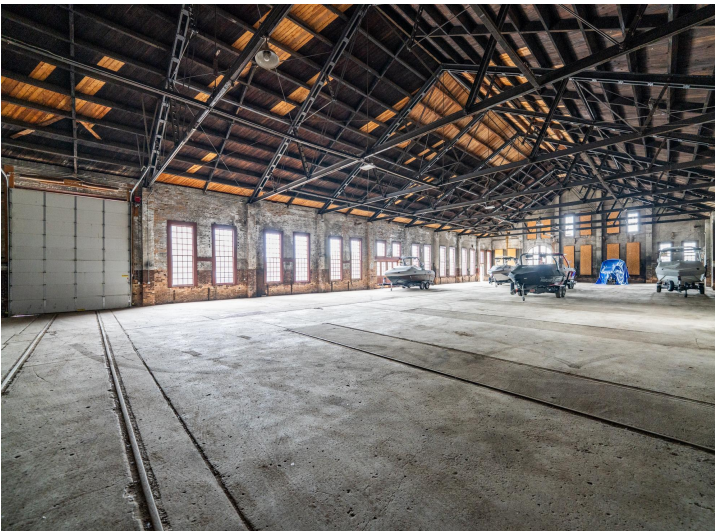
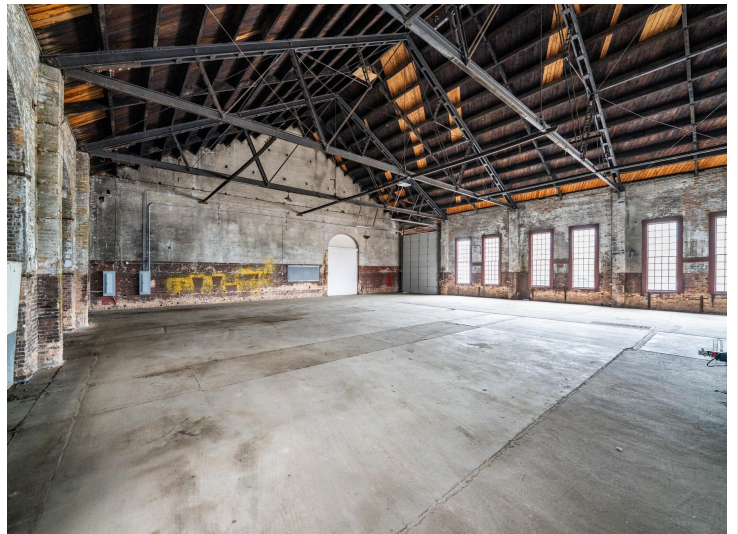
**Call Affinity Real Estate**

**218-237-3333**

**info@affinityrealestate.com**



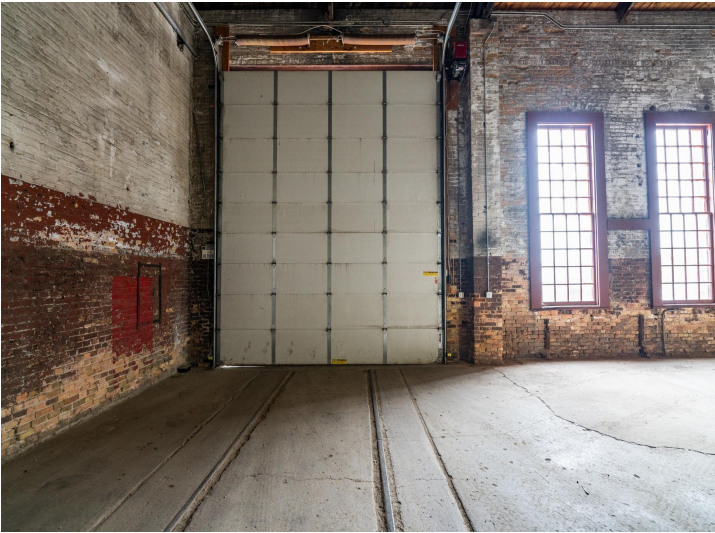
**Affinity Real Estate - 600 Park Avenue South - Park Rapids MN 56470**



website: [www.AffinityRealEstate.com](http://www.AffinityRealEstate.com) | email: [info@affinityrealestate.com](mailto:info@affinityrealestate.com) | office: 218-237-3333 | fax: 218-237-3377

**Affinity**  
REAL ESTATE INC

**\$3**  
MLS 6731673 Commercial  
(1 North) 1320 Northern  
Pacific Road  
Brainerd MN 56401



website: [www.AffinityRealEstate.com](http://www.AffinityRealEstate.com) | email: [info@affinityrealestate.com](mailto:info@affinityrealestate.com) | office: 218-237-3333 | fax: 218-237-3377



**\$3**  
MLS 6731673 Commercial  
(1 North) 1320 Northern  
Pacific Road  
Brainerd MN 56401