



MLS 6731750 Residential

**\$240,000**

2,031 sq ft  
3 bedrooms  
2 baths

1220 Irving Street  
Alexandria MN 56308

Status: Active

**Description:**

Welcome to this spacious 3-bedroom, 2-bath home in the heart of Alexandria! With a large kitchen and living spaces, there's plenty of room to spread out and make it your own. The main floor features 3 bedrooms, full bath, living room, dining room and kitchen. The lower level features a big family room, laundry/utility room and a bonus room that's perfect for a home office or extra storage. Enjoy both an attached 1-stall garage and a detached 2-stall garage (just needs a little TLC). Outside, you'll love the large, fenced-in backyard filled with mature trees, offering privacy and shade. This home has great bones and just needs a little love and updating to truly shine. A fantastic opportunity to build equity in a great Alexandria location!

**Additional Details:**

Year Built	1955
Lot Acres	0.33
Lot Dimensions	95x150x95x150
Garage Stalls	3
School District	206
Taxes	\$2,280
Taxes with Assessments	\$2,280
Tax Year	2025

**Additional Features:**

**Basement:** Finished, Full **Fuel:** Natural Gas **Garage:** 3 **Heat:** Boiler **Sewer:** City Sewer/Connected **Water:** City Water/Connected **Air Conditioning:** Window Unit(s)

**Driving Directions:**

From 3rd Ave E & Broadway St, head south on MN-29/Broadway St, turn left on 12th Ave E, turn right on Irving St, house is on your left.



Listed By:  
Central MN Realty LLC

Affinity Real Estate Inc. participates in the Regional Multiple Listing Service of Minnesota, Inc Broker Reciprocity (sm) program, allowing us to display other broker's listings on our website. All properties are subject to prior sale, change or withdrawal.



**Call Affinity Real Estate**

**218-237-3333**

**info@affinityrealestate.com**



**Affinity Real Estate - 600 Park Avenue South - Park Rapids MN 56470**





website: [www.AffinityRealEstate.com](http://www.AffinityRealEstate.com) | email: [info@affinityrealestate.com](mailto:info@affinityrealestate.com) | office: 218-237-3333 | fax: 218-237-3377

**Affinity**  
REAL ESTATE INC

**\$240,000**  
MLS 6731750 Residential  
1220 Irving Street  
Alexandria MN 56308





website: [www.AffinityRealEstate.com](http://www.AffinityRealEstate.com) | email: [info@affinityrealestate.com](mailto:info@affinityrealestate.com) | office: 218-237-3333 | fax: 218-237-3377



**\$240,000**  
 MLS 6731750 Residential  
 1220 Irving Street  
 Alexandria MN 56308





website: [www.AffinityRealEstate.com](http://www.AffinityRealEstate.com) | email: [info@affinityrealestate.com](mailto:info@affinityrealestate.com) | office: 218-237-3333 | fax: 218-237-3377

**Affinity**  
REAL ESTATE INC

**\$240,000**  
MLS 6731750 Residential  
1220 Irving Street  
Alexandria MN 56308



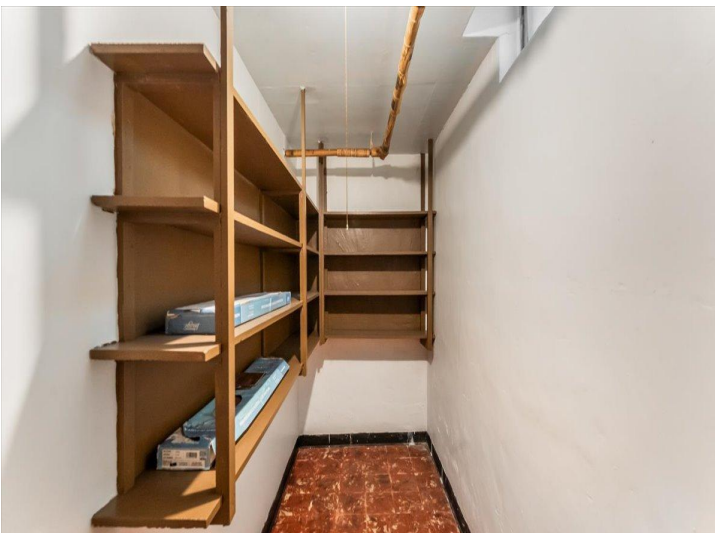


website: [www.AffinityRealEstate.com](http://www.AffinityRealEstate.com) | email: [info@affinityrealestate.com](mailto:info@affinityrealestate.com) | office: 218-237-3333 | fax: 218-237-3377



**\$240,000**  
MLS 6731750 Residential  
1220 Irving Street  
Alexandria MN 56308





website: [www.AffinityRealEstate.com](http://www.AffinityRealEstate.com) | email: [info@affinityrealestate.com](mailto:info@affinityrealestate.com) | office: 218-237-3333 | fax: 218-237-3377

**Affinity**  
REAL ESTATE INC

**\$240,000**  
MLS 6731750 Residential  
1220 Irving Street  
Alexandria MN 56308





website: [www.AffinityRealEstate.com](http://www.AffinityRealEstate.com) | email: [info@affinityrealestate.com](mailto:info@affinityrealestate.com) | office: 218-237-3333 | fax: 218-237-3377



**\$240,000**  
MLS 6731750 Residential  
1220 Irving Street  
Alexandria MN 56308