



MLS 6731824 Land

\$195,000

25 Acres
Raw Land

Parcel D 48th Street
Pequot Lakes MN 56472

Status: Active

Description:

Explore 25 acres of beautiful and diverse terrain that includes a mix of open meadows and wooded areas with rolling hills. This property features multiple excellent building sites and offers access from a paved township road, 48th Street SW. This property presents a prime opportunity for building, recreation, or investment. For detailed information on the location and topography, please refer to the aerial maps. Embrace the potential of this unique piece of land!

Additional Details:

Lot Acres	25
Lot Dimensions	660 x 1638
School District	2174
Taxes	(unreported)
Taxes with Assessments	(unreported)
Tax Year	2025

Additional Features:

Driving Directions:

From the intersection of Patriot Avenue & County Road 17 South of Pequot Lakes, take County Road 17 for 6.2 miles, turn right onto County Road 1, go 2 miles, turn left onto 48th Street SW to the address 3436. The 25 acres will be across the road from the address on your left.



Listed By:
Larson Group Real Estate/Kelle

Affinity Real Estate Inc. participates in the Regional Multiple Listing Service of Minnesota, Inc Broker Reciprocity (sm) program, allowing us to display other broker's listings on our website. All properties are subject to prior sale, change or withdrawal.



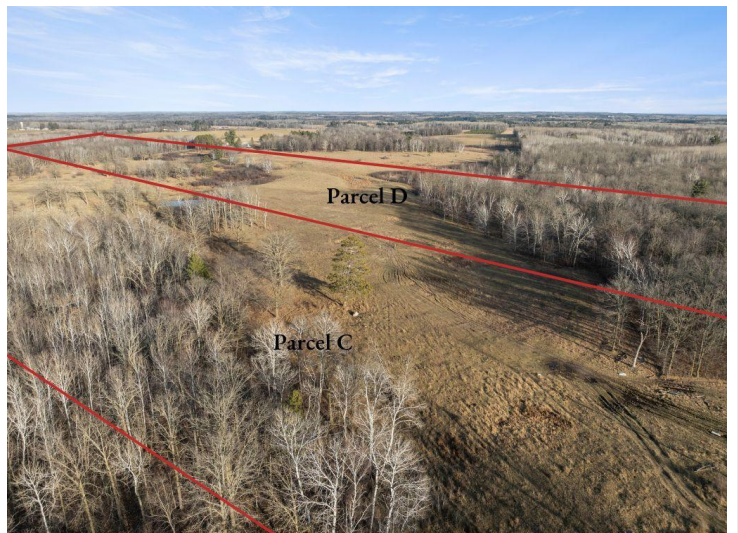
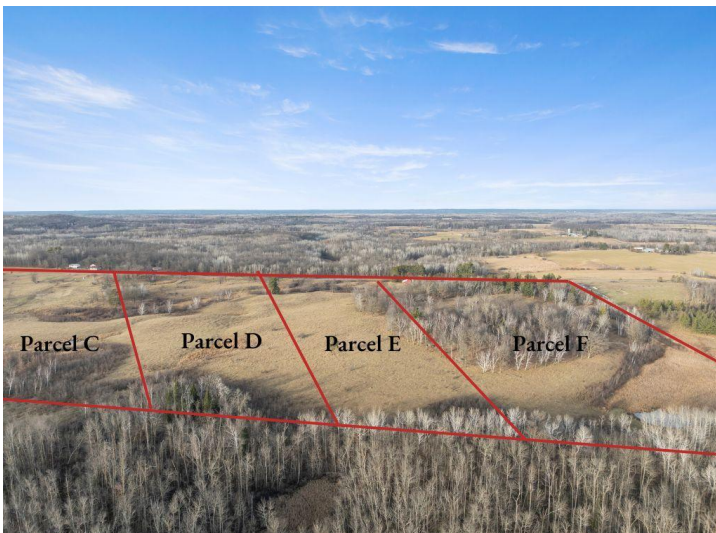
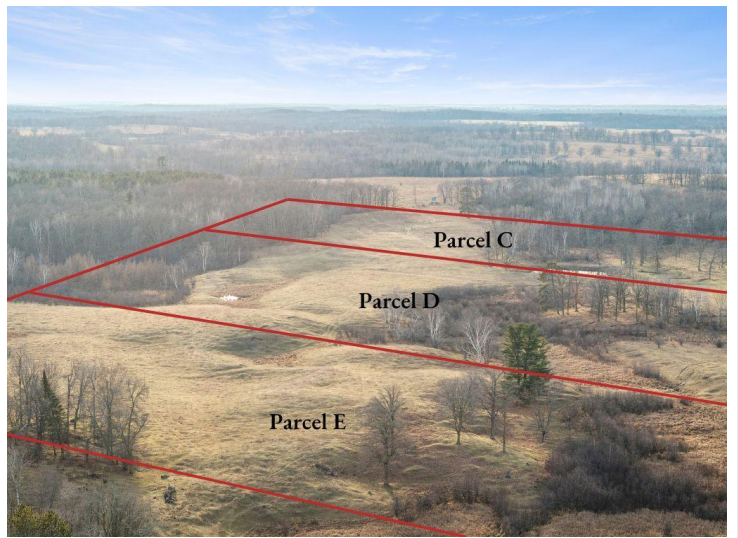
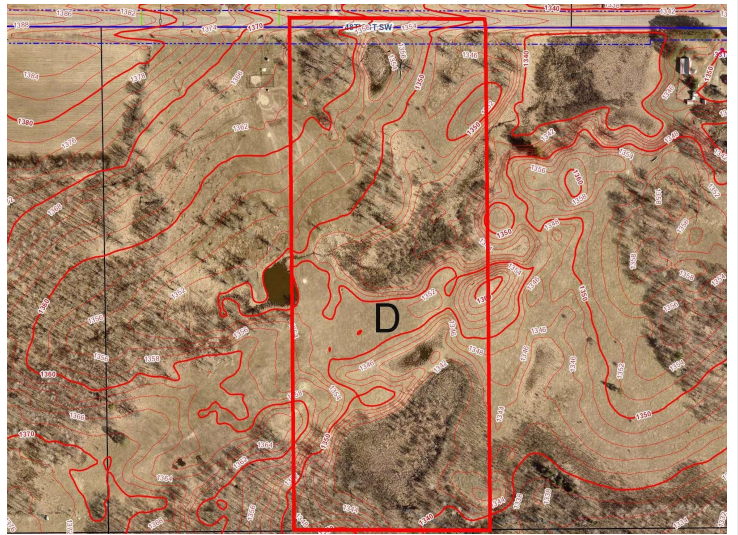
Call Affinity Real Estate

218-237-3333

info@affinityrealestate.com



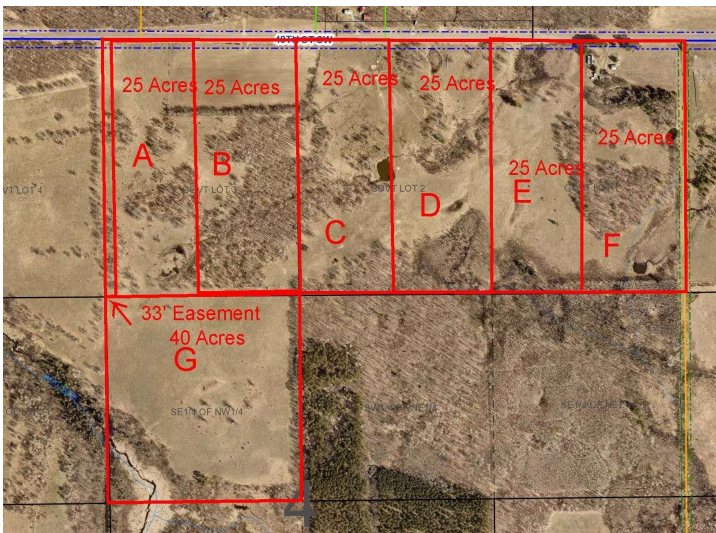
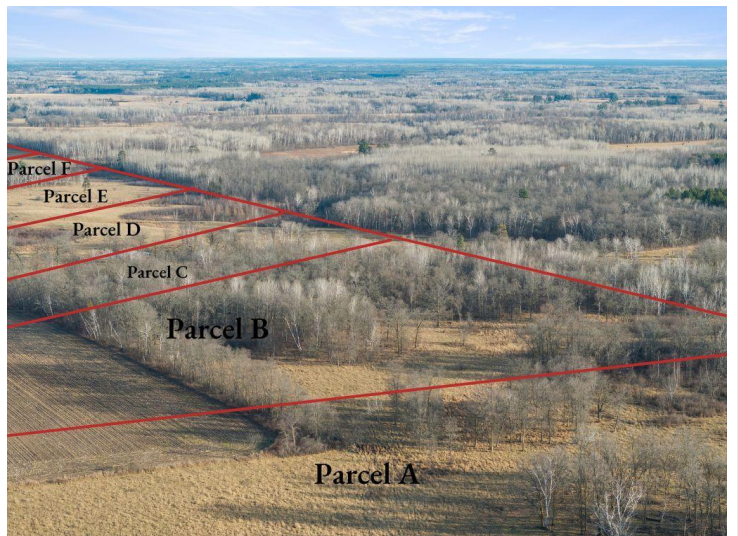
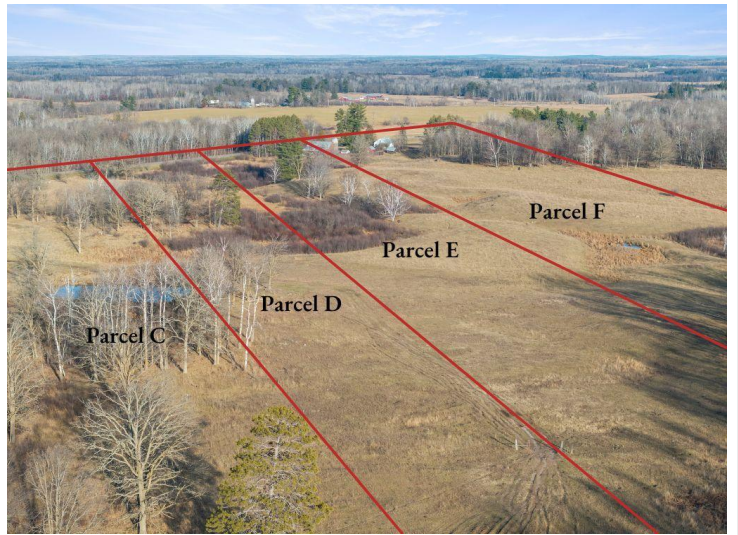
Affinity Real Estate - 600 Park Avenue South - Park Rapids MN 56470



website: www.AffinityRealEstate.com | email: info@affinityrealestate.com | office: 218-237-3333 | fax: 218-237-3377



\$195,000
 MLS 6731824 Land
 Parcel D 48th Street
 Pequot Lakes MN 56472



website: www.AffinityRealEstate.com | email: info@affinityrealestate.com | office: 218-237-3333 | fax: 218-237-3377



\$195,000
 MLS 6731824 Land
 Parcel D 48th Street
 Pequot Lakes MN 56472