

MLS 6731855 Land

**\$240,000**

40 Acres  
Raw Land

Parcel G 48th Street  
Pequot Lakes MN 56472

Status: Active

#### Description:

Explore 40 acres of diverse terrain, featuring 30 acres of open, rolling meadows and 10 acres of wooded land with gentle hills. This property offers excellent opportunities for building your new home, as it borders the peaceful Mayo Creek in the southwest corner, providing serene views and natural beauty. Access is available from a paved township road, 48th St SW. There will be a 33-foot easement to provide access to this acreage. This site represents a prime opportunity for building, recreation, or investment. For detailed location and topography, please refer to the aerial maps. Embrace the potential of this unique piece of land!

#### Additional Details:

Lot Acres	40
Lot Dimensions	1320 x 1320
School District	2174
Taxes	\$368
Taxes with Assessments	\$368
Tax Year	2025

#### Additional Features:

#### Driving Directions:

From the intersection of Patriot Avenue & County Road 17 South of Pequot Lakes, take County Road 17 for 6.2 miles, turn right onto County Road 1, go 2 miles, turn left onto 48th Street SW to the address 3534. Access to the 40 acres will be from an easement on Parcel A.



Listed By:  
Larson Group Real Estate/Kelle

Affinity Real Estate Inc. participates in the Regional Multiple Listing Service of Minnesota, Inc Broker Reciprocity (sm) program, allowing us to display other broker's listings on our website. All properties are subject to prior sale, change or withdrawal.



Call Affinity Real Estate

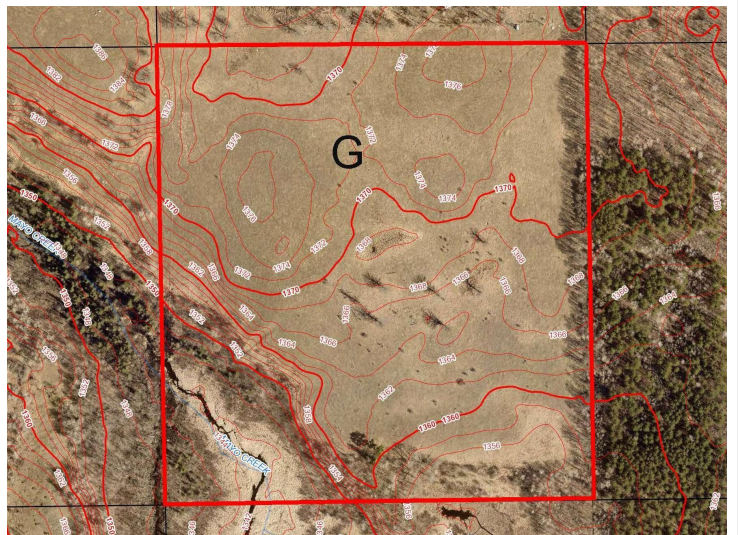
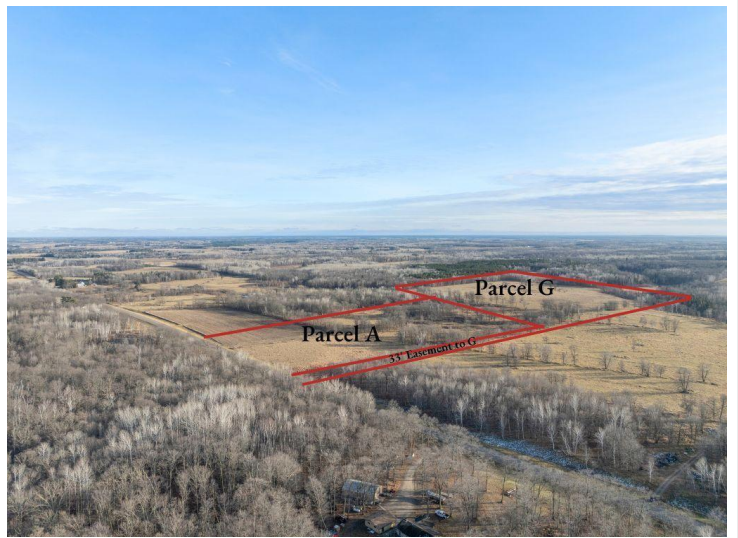
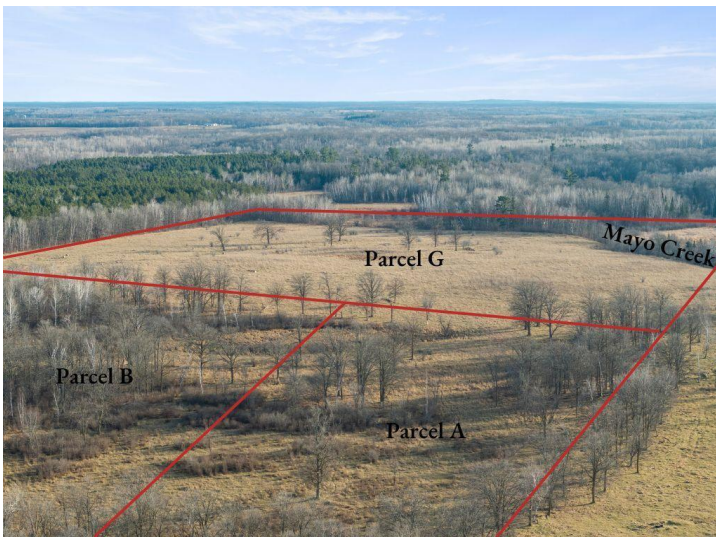
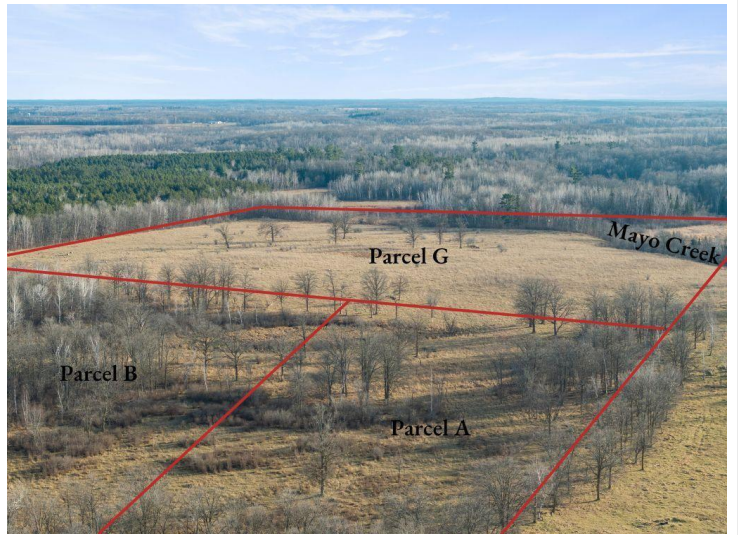
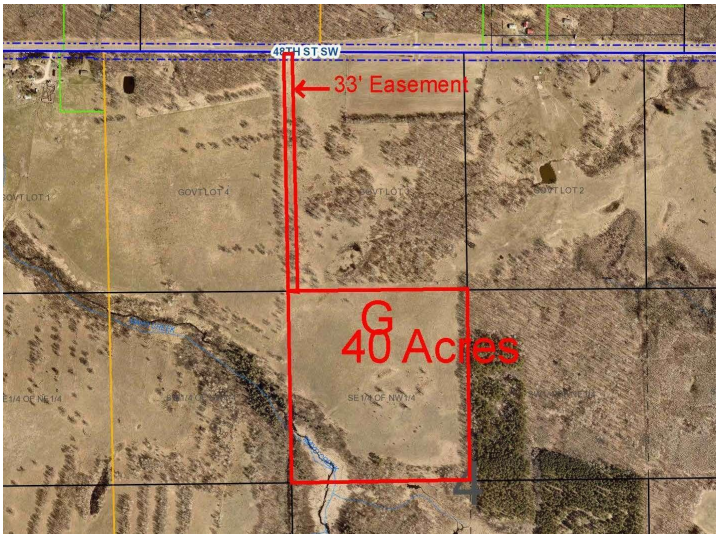
**218-237-3333**

[info@affinityrealestate.com](mailto:info@affinityrealestate.com)



Affinity Real Estate - 600 Park Avenue South - Park Rapids MN 56470



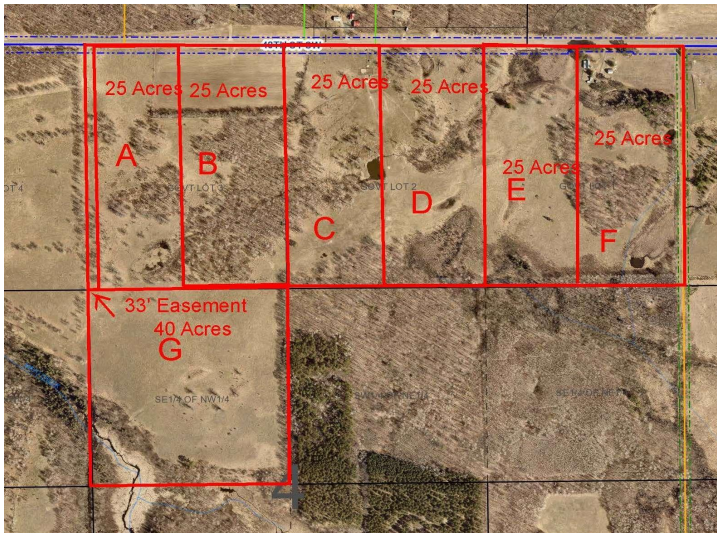


website: [www.AffinityRealEstate.com](http://www.AffinityRealEstate.com) | email: [info@affinityrealestate.com](mailto:info@affinityrealestate.com) | office: 218-237-3333 | fax: 218-237-3377



**\$240,000**  
 MLS 6731855 Land  
 Parcel G 48th Street  
 Pequot Lakes MN 56472





website: [www.AffinityRealEstate.com](http://www.AffinityRealEstate.com) | email: [info@affinityrealestate.com](mailto:info@affinityrealestate.com) | office: 218-237-3333 | fax: 218-237-3377



**\$240,000**  
MLS 6731855 Land  
Parcel G 48th Street  
Pequot Lakes MN 56472