



MLS 6732064 Land

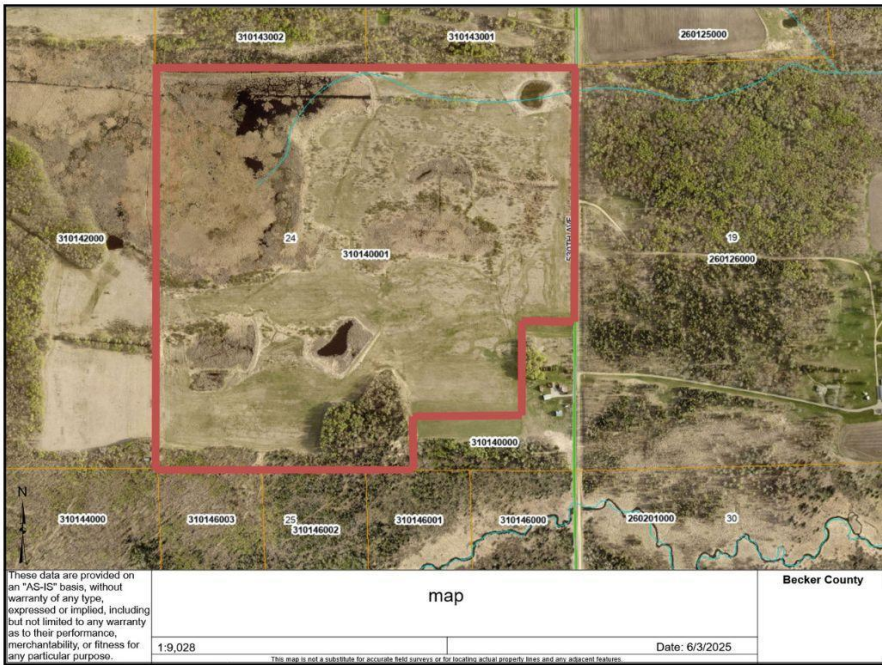
**\$250,000**

134.31 Acres

Raw Land

xxxxx 530th Avenue  
Menahga MN 56464

Status: Active



#### Description:

134 acres of hunting ground in a prime whitetail location! Experience the beauty of central Minnesota in its native state. Expansive grasses, small ponds, and wooded areas offer wildlife a welcome home throughout this parcel. Property is in a perpetual easement with the USDA - restrictive covenants apply. The entire parcel is subject to the easement and will not be suitable for building. Deer stands are excluded from sale.

#### Additional Details:

Lot Acres	134.31
Lot Dimensions	134.31 acres
School District	821
Taxes	\$746
Taxes with Assessments	\$746
Tax Year	2024

#### Additional Features:

#### Driving Directions:

From Frazee - Head E on Hwy 87, turn right onto 530th Ave. Parcel on the W side of the road.



Listed By:  
Weichert, Realtors - Paulson Land Co

Affinity Real Estate Inc. participates in the Regional Multiple Listing Service of Minnesota, Inc Broker Reciprocity (sm) program, allowing us to display other broker's listings on our website. All properties are subject to prior sale, change or withdrawal.



Call Affinity Real Estate

**218-237-3333**

[info@affinityrealestate.com](mailto:info@affinityrealestate.com)



Affinity Real Estate - 600 Park Avenue South - Park Rapids MN 56470



website: [www.AffinityRealEstate.com](http://www.AffinityRealEstate.com) | email: [info@affinityrealestate.com](mailto:info@affinityrealestate.com) | office: 218-237-3333 | fax:218-237-3377



**\$250,000**

MLS 6732064 Land  
xxxxx 530th Avenue  
Menahga MN 56464

website: [www.AffinityRealEstate.com](http://www.AffinityRealEstate.com) | email: [info@affinityrealestate.com](mailto:info@affinityrealestate.com) | office: 218-237-3333 | fax:218-237-3377



**\$250,000**

MLS 6732064 Land  
xxxxx 530th Avenue  
Menahga MN 56464