



MLS 6732065 Lake Home

\$1,799,900

5,921 sq ft
3 bedrooms
5 baths

8821 Interlachen Road
Nisswa MN 56468

Waterfront: Margaret Lake (Lake
Shore City)

Status: Active

Description:

Welcome to an extraordinary rare opportunity to own a one-of-a-kind private lakefront sanctuary on Margaret Lake of the Gull Lake Chain.

Perfectly positioned on 1.3 acres of landscaped grounds with 125 feet of hard sand shoreline. This west-facing custom brick estate captures breathtaking sunsets over the water, offering an unmatched blend of natural beauty, privacy, and refined elegance. Three Marble masonry fireplaces, adding warmth and timeless character. Dedicated Library/Bourbon room -your personal retreat for reading, relaxing, or entertaining.

Beautiful Clear Cedar Sauna for natural detoxification!

Every inch of the home exudes sophistication, from the rich Douglas fir floors and doors that flow seamlessly throughout the living spaces to the expansive windows that bathe the interior in golden-hour light. The layout is designed for both grand entertaining and intimate comfort, a gourmet kitchen, seamless Cambria countertops, Sub-Zero fridge and two Miele ovens.

Private Studio Apartment is perfect for guests and extended family w/Bathroom & Kitchen w Sub-Zero fridge.

Whether hosting under the stars or enjoying a quiet sunset, this home delivers the rare combination of refined design, perfect orientation, and unmatched location in the Brainerd Lakes area!

Designed for both serenity and sophistication, the estate is just minutes from fine dining, boutique shopping, and championship-golf courses.

Additional Details:

Year Built	1986
Lot Acres	1.3
Lot Dimensions	125x382x127x385
Garage Stalls	3
School District	181
Taxes	\$11,854
Taxes with Assessments	\$11,920
Tax Year	2025



Listed By:

Sheryl Ann Fournier, Nisswa

Compliant - yes, Tank with Drainage Field **Water:** Submersible - 4 Inch **Air:** Central Air **Heat:** Boiler, Electric Radiant Heatplaces, Radiant Floor **Sewer:** Septic System
Affinity Real Estate Inc. participates in the Regional Multiple Listing Service of Minnesota, Inc Broker Reciprocity (sm) program, allowing

us to display other broker's listings on our website. All properties are from 77 and 371 in Nisswa take 77 west to 8821 on right subject to prior sale, change or withdrawal.



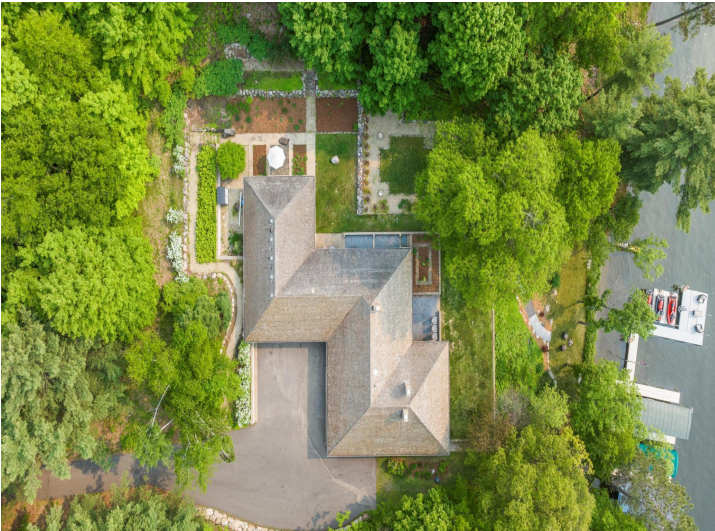
Call Affinity Real Estate

218-237-3333

info@affinityrealestate.com



Affinity Real Estate - 600 Park Avenue South - Park Rapids MN 56470



website: www.AffinityRealEstate.com | email: info@affinityrealestate.com | office: 218-237-3333 | fax: 218-237-3377

Affinity
REAL ESTATE INC

\$1,799,900

MLS 6732065 Lake Home
8821 Interlachen Road
Nisswa MN 56468



website: www.AffinityRealEstate.com | email: info@affinityrealestate.com | office: 218-237-3333 | fax: 218-237-3377

Affinity
REAL ESTATE INC

\$1,799,900

MLS 6732065 Lake Home
8821 Interlachen Road
Nisswa MN 56468



website: www.AffinityRealEstate.com | email: info@affinityrealestate.com | office: 218-237-3333 | fax: 218-237-3377

Affinity
REAL ESTATE INC

\$1,799,900
MLS 6732065 Lake Home
8821 Interlachen Road
Nisswa MN 56468



website: www.AffinityRealEstate.com | email: info@affinityrealestate.com | office: 218-237-3333 | fax: 218-237-3377

Affinity
REAL ESTATE INC

\$1,799,900
MLS 6732065 Lake Home
8821 Interlachen Road
Nisswa MN 56468

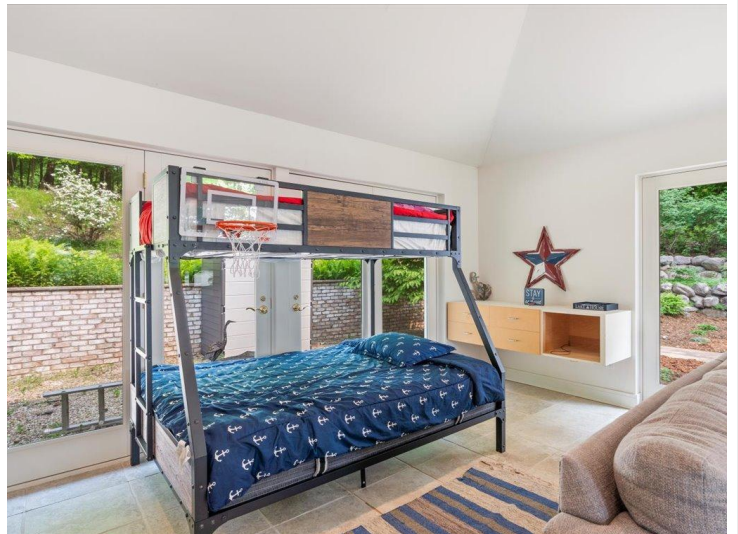


website: www.AffinityRealEstate.com | email: info@affinityrealestate.com | office: 218-237-3333 | fax: 218-237-3377

Affinity
REAL ESTATE INC

\$1,799,900

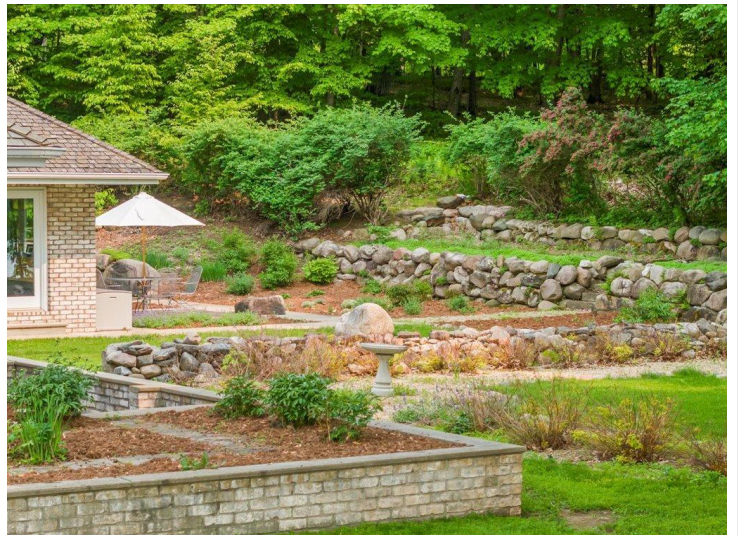
MLS 6732065 Lake Home
8821 Interlachen Road
Nisswa MN 56468



website: www.AffinityRealEstate.com | email: info@affinityrealestate.com | office: 218-237-3333 | fax: 218-237-3377



\$1,799,900
 MLS 6732065 Lake Home
 8821 Interlachen Road
 Nisswa MN 56468



website: www.AffinityRealEstate.com | email: info@affinityrealestate.com | office: 218-237-3333 | fax: 218-237-3377

Affinity
REAL ESTATE INC

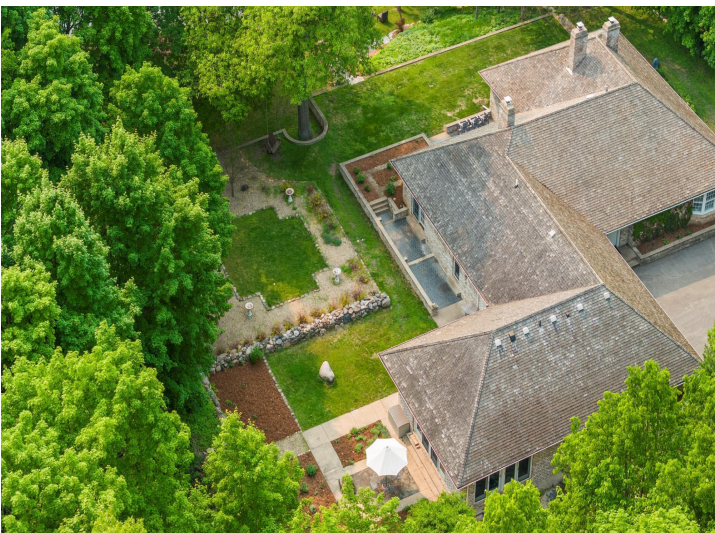
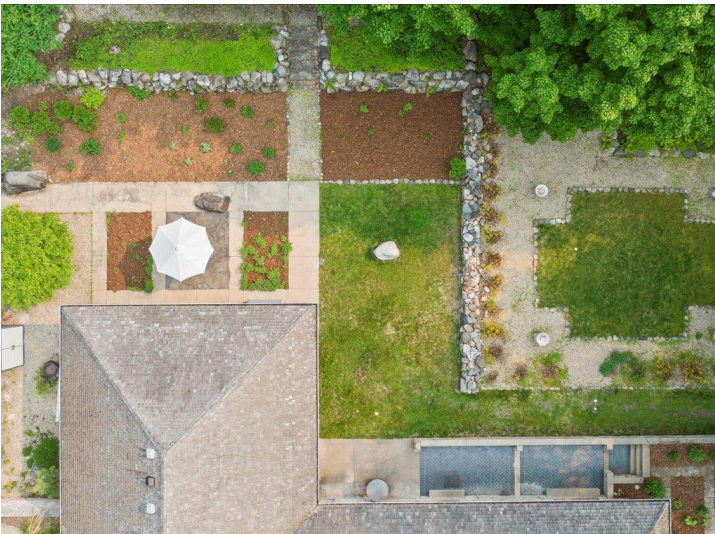
\$1,799,900
MLS 6732065 Lake Home
8821 Interlachen Road
Nisswa MN 56468



website: www.AffinityRealEstate.com | email: info@affinityrealestate.com | office: 218-237-3333 | fax: 218-237-3377

Affinity
REAL ESTATE INC

\$1,799,900
MLS 6732065 Lake Home
8821 Interlachen Road
Nisswa MN 56468



website: www.AffinityRealEstate.com | email: info@affinityrealestate.com | office: 218-237-3333 | fax: 218-237-3377

Affinity
REAL ESTATE INC

\$1,799,900

MLS 6732065 Lake Home
8821 Interlachen Road
Nisswa MN 56468



website: www.AffinityRealEstate.com | email: info@affinityrealestate.com | office: 218-237-3333 | fax: 218-237-3377



\$1,799,900

MLS 6732065 Lake Home
8821 Interlachen Road
Nisswa MN 56468