



MLS 6732206 Lake Land

\$25,000

Description:

BIG value at an entry level price. There is also a CONTRACT FOR DEED opportunity to sweet pot. Whether you're here for the lake access or Hubbard County's vast OHV and snowmobile trails, your gateway to the north starts here. Includes a cleared building site with ample space for a variety of cabin sizes. A desirable end lot location provides privacy yet it is just a 2 minute walk to the shoreline. You are allowed to have your own dock or enjoy the association one as shown. Electricity and internet are available. Shared amenities include 900+ feet of lake frontage, swimming beach, 18+ acres, private boat launch, fish cleaning house, storage building, volleyball court, playground and so much more! Lake George is over 800 acres and provides great fishing and recreational opportunities.

Additional Details:

Lot Acres	0.06
Lot Dimensions	50 x 50 x 50 x 50
School District	113
Taxes	\$92
Taxes with Assessments	\$92
Tax Year	2025

Additional Features:

Driving Directions:

From Lake George: Go east on Hwy 71 to a right on New Melahn's Drive. Follow to a right on Necktie Lane to the 'Lot 11 & arrow signs' on right. The lot is roughly 100ft north of Necktie Lane. It is cleared and has a For Sale sign on it. The corners are staked and flagged in blaze orange.



Listed By:
Affinity Real Estate Inc.

Affinity Real Estate Inc. participates in the Regional Multiple Listing Service of Minnesota, Inc Broker Reciprocity (sm) program, allowing us to display other broker's listings on our website. All properties are subject to prior sale, change or withdrawal.



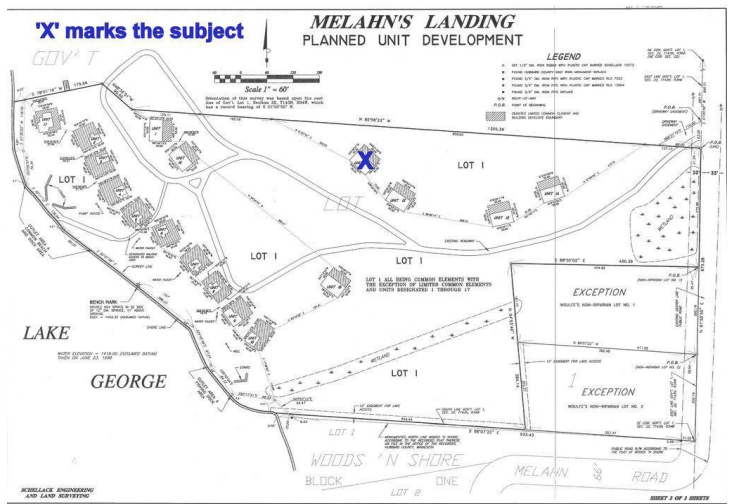
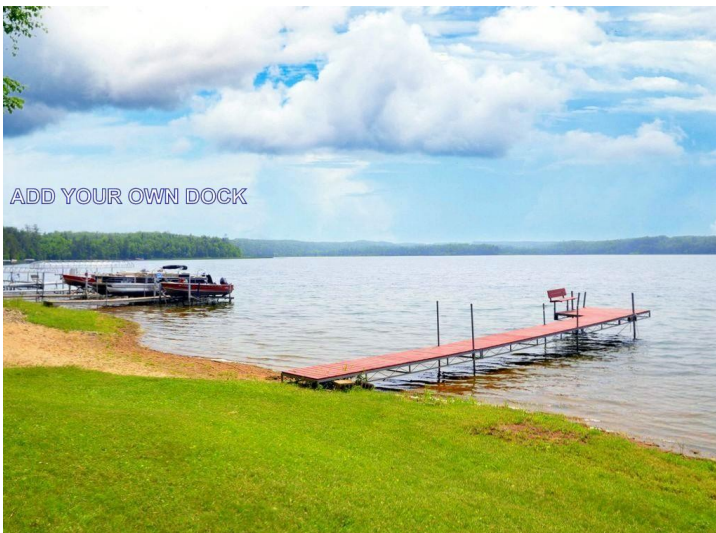
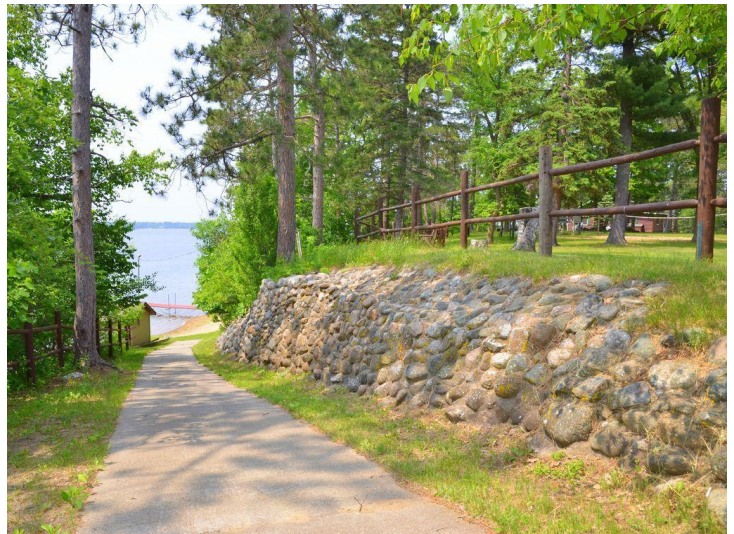
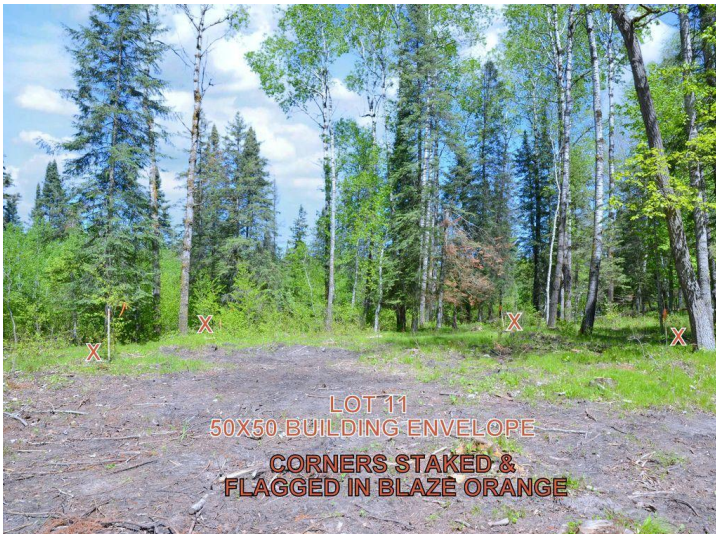
Call Affinity Real Estate

218-237-3333

info@affinityrealestate.com



Affinity Real Estate - 600 Park Avenue South - Park Rapids MN 56470



website: www.AffinityRealEstate.com | email: info@affinityrealestate.com | office: 218-237-3333 | fax: 218-237-3377

Affinity
REAL ESTATE INC

\$25,000
MLS 6732206 Lake Land
XXX Necktie Loop
Lake George MN 56458