



MLS 6732321 Residential

\$174,900

1,212 sq ft
3 bedrooms
1 baths

810 Charles Street
Park Rapids MN 56470

Status: Active

Description:

Park Rapids City Home - Perfect property for whole family! This charming 3-bedroom, 1-bath home has natural gas heat, maintenance free siding, main floor bedroom along with main floor laundry. Set on a spacious, wooded .55-acre lot. The additional buildings consists of double detached garage with large addition, 24 x 48 pole shed with concrete floor and electric and also a potting shed or just extra storage. Located in a great neighborhood close to town amenities. Don't miss this opportunity to own a versatile and welcoming home in Park Rapids.

Additional Details:

Year Built	1905
Lot Acres	0.55
Lot Dimensions	90 x 264
Garage Stalls	2
School District	309
Taxes	\$1,563
Taxes with Assessments	\$1,784
Tax Year	2025

Additional Features:

Basement: Block, Partial, Unfinished **Fuel:** Natural Gas **Garage:** 2 **Heat:** Forced Air **Sewer:** City Sewer/Connected **Water:** City Water/Connected
Air Conditioning: Central Air

Driving Directions:

Take Hwy 34 East to Central Avenue, go N on Central and take 1st right on Charles Street. Home will be on South side.



Listed By:
Affinity Real Estate Inc.

Affinity Real Estate Inc. participates in the Regional Multiple Listing Service of Minnesota, Inc Broker Reciprocity (sm) program, allowing us to display other broker's listings on our website. All properties are subject to prior sale, change or withdrawal.



Call Affinity Real Estate

218-237-3333

info@affinityrealestate.com



Affinity Real Estate - 600 Park Avenue South - Park Rapids MN 56470



website: www.AffinityRealEstate.com | email: info@affinityrealestate.com | office: 218-237-3333 | fax: 218-237-3377

Affinity
REAL ESTATE INC

\$174,900
MLS 6732321 Residential
810 Charles Street
Park Rapids MN 56470



website: www.AffinityRealEstate.com | email: info@affinityrealestate.com | office: 218-237-3333 | fax: 218-237-3377

Affinity
REAL ESTATE INC

\$174,900
MLS 6732321 Residential
810 Charles Street
Park Rapids MN 56470



website: www.AffinityRealEstate.com | email: info@affinityrealestate.com | office: 218-237-3333 | fax: 218-237-3377



\$174,900
 MLS 6732321 Residential
 810 Charles Street
 Park Rapids MN 56470



website: www.AffinityRealEstate.com | email: info@affinityrealestate.com | office: 218-237-3333 | fax: 218-237-3377



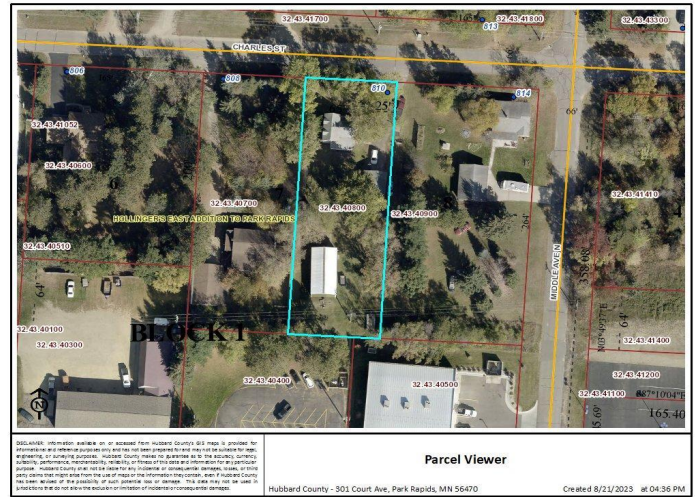
\$174,900
MLS 6732321 Residential
810 Charles Street
Park Rapids MN 56470



website: www.AffinityRealEstate.com | email: info@affinityrealestate.com | office: 218-237-3333 | fax: 218-237-3377



\$174,900
 MLS 6732321 Residential
 810 Charles Street
 Park Rapids MN 56470



website: www.AffinityRealEstate.com | email: info@affinityrealestate.com | office: 218-237-3333 | fax: 218-237-3377



\$174,900
 MLS 6732321 Residential
 810 Charles Street
 Park Rapids MN 56470