



MLS 6732363 Lake Land

\$334,900

Description:

Enjoy a true "Up North" getaway on this beautifully landscaped 1-acre lot featuring gentle-to-level elevation and west views of a pristine Long Lake. Sand beach by the dock—perfect for lakeside relaxation and swimming, 24-foot roll-in dock offers convenient lake access for boating and fishing.

Utilities are already in place, including a recently added 4-inch drilled well, septic system, and electrical service.

The grounds are well-maintained and landscaped with rock boulders, mature hardwoods, and towering pines. A lakeside patio with a fire pit sets the scene for unforgettable evenings by the water.

Perfect peaceful retreat, a future build site, or a low-maintenance vacation escape. Included on the property is a 2022 Kropf Lakeside Park Model, offering approximately 400 square feet of living space. Features a private king bedroom, a double loft, and a full bathroom with a fiberglass shower stall—comfortably sleeping up to six. Sold furnished. Park Model could be sold to make way for dream home. Currently new ones sell for around \$85K pre-tax. Please schedule any showings.

Additional Details:

Lot Acres	1
Lot Dimensions	150 x 340 x 112 x 341
School District	2174
Taxes	\$910
Taxes with Assessments	\$976
Tax Year	2025

Additional Features:

Driving Directions:

From Pine River to north of Backus, east on COR RD 87 (at Godfrey's Store), 7.5 miles to left onto 15th Ave NW, to sign on parcel just past fire #2059.



Listed By:
Real Broker, LLC

Affinity Real Estate Inc. participates in the Regional Multiple Listing Service of Minnesota, Inc Broker Reciprocity (sm) program, allowing us to display other broker's listings on our website. All properties are subject to prior sale, change or withdrawal.



Call Affinity Real Estate

218-237-3333

info@affinityrealestate.com



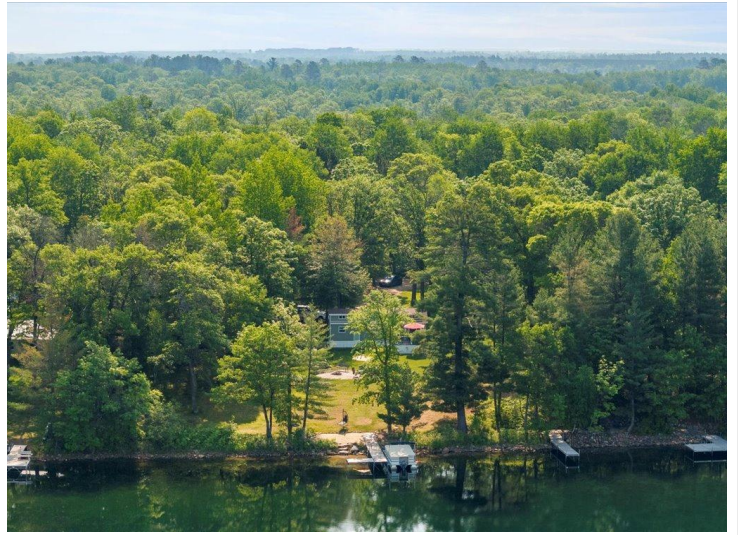
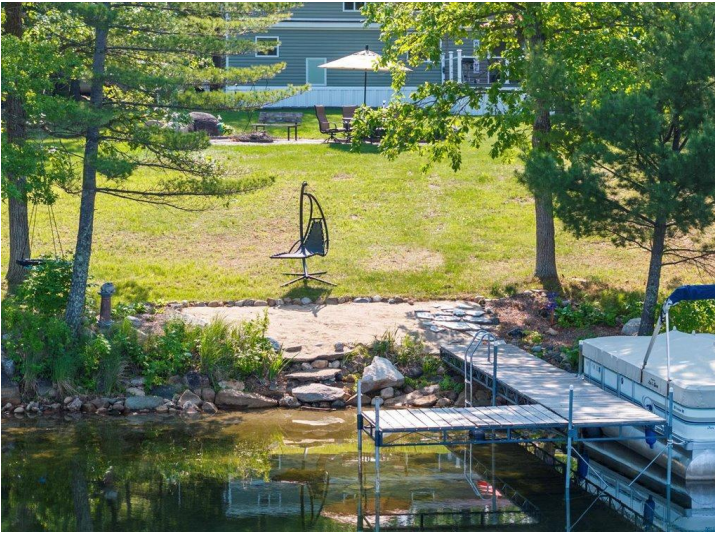
Affinity Real Estate - 600 Park Avenue South - Park Rapids MN 56470



website: www.AffinityRealEstate.com | email: info@affinityrealestate.com | office: 218-237-3333 | fax: 218-237-3377

Affinity
REAL ESTATE INC

\$334,900
MLS 6732363 Lake Land
TBD 15th Avenue
Backus MN 56435



website: www.AffinityRealEstate.com | email: info@affinityrealestate.com | office: 218-237-3333 | fax: 218-237-3377

Affinity
REAL ESTATE INC

\$334,900
MLS 6732363 Lake Land
TBD 15th Avenue
Backus MN 56435



website: www.AffinityRealEstate.com | email: info@affinityrealestate.com | office: 218-237-3333 | fax: 218-237-3377

Affinity
REAL ESTATE INC

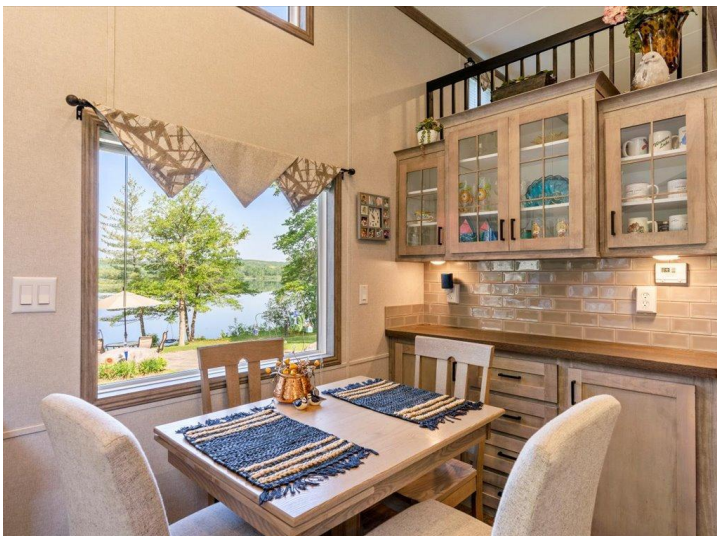
\$334,900
MLS 6732363 Lake Land
TBD 15th Avenue
Backus MN 56435



website: www.AffinityRealEstate.com | email: info@affinityrealestate.com | office: 218-237-3333 | fax: 218-237-3377

Affinity
REAL ESTATE INC

\$334,900
MLS 6732363 Lake Land
TBD 15th Avenue
Backus MN 56435



website: www.AffinityRealEstate.com | email: info@affinityrealestate.com | office: 218-237-3333 | fax: 218-237-3377

Affinity
REAL ESTATE INC

\$334,900
MLS 6732363 Lake Land
TBD 15th Avenue
Backus MN 56435



website: www.AffinityRealEstate.com | email: info@affinityrealestate.com | office: 218-237-3333 | fax: 218-237-3377



\$334,900
MLS 6732363 Lake Land
TBD 15th Avenue
Backus MN 56435