



MLS 6732488 Lake Home

\$499,900

2,128 sq ft
4 bedrooms
2 baths

13215 County 110
Nevis MN 56467

Waterfront: Tripp

Status: Pending

Description:

Welcome to your personal Oasis on scenic Tripp Lake. This beautiful 4 bed, 2 bath home sits on 31+ wooded acres and has over 800 ft of shoreline. This immaculately kept home has amazing lake views, a wonderful open layout and many recent utility upgrades. Also included is a heated shop/garage and a 28 x 42 pole shed. This property is being sold turnkey including the furniture, boat, dock, tools and much more. This is truly a one of a kind property that must be seen to be fully appreciated. Book your showing now!

Additional Details:

Year Built	2002
Lot Acres	31.45
Lot Dimensions	Irregular
Garage Stalls	3
School District	113
Taxes	\$2,315
Taxes with Assessments	\$2,536
Tax Year	2025

Additional Features:

Basement: Crawl Space **Fuel:** Electric, Propane **Garage:** 3 **Heat:** Forced Air, Other **Sewer:** Septic System Compliant - Yes, Tank with Drainage Field **Water:** Submersible - 4 Inch, Drilled **Air Conditioning:** Central Air

Driving Directions:

From Nevis go South on Cty 13, turn East on State Hwy 87, turn South on Cty 110 and proceed to property on your right.



Listed By:
Affinity Real Estate Inc.

Affinity Real Estate Inc. participates in the Regional Multiple Listing Service of Minnesota, Inc Broker Reciprocity (sm) program, allowing us to display other broker's listings on our website. All properties are subject to prior sale, change or withdrawal.



Call Affinity Real Estate

218-237-3333

info@affinityrealestate.com



Affinity Real Estate - 600 Park Avenue South - Park Rapids MN 56470



website: www.AffinityRealEstate.com | email: info@affinityrealestate.com | office: 218-237-3333 | fax: 218-237-3377

Affinity
REAL ESTATE INC

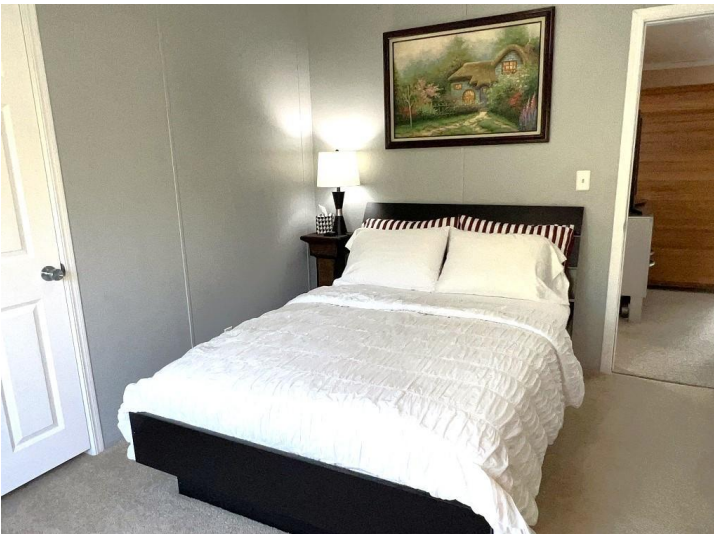
\$499,900
MLS 6732488 Lake Home
13215 County 110
Nevis MN 56467



website: www.AffinityRealEstate.com | email: info@affinityrealestate.com | office: 218-237-3333 | fax: 218-237-3377

Affinity
REAL ESTATE INC

\$499,900
MLS 6732488 Lake Home
13215 County 110
Nevis MN 56467



website: www.AffinityRealEstate.com | email: info@affinityrealestate.com | office: 218-237-3333 | fax: 218-237-3377

Affinity
REAL ESTATE INC

\$499,900
MLS 6732488 Lake Home
13215 County 110
Nevis MN 56467



website: www.AffinityRealEstate.com | email: info@affinityrealestate.com | office: 218-237-3333 | fax: 218-237-3377

Affinity
REAL ESTATE INC

\$499,900
MLS 6732488 Lake Home
13215 County 110
Nevis MN 56467



website: www.AffinityRealEstate.com | email: info@affinityrealestate.com | office: 218-237-3333 | fax: 218-237-3377

Affinity
REAL ESTATE INC

\$499,900
MLS 6732488 Lake Home
13215 County 110
Nevis MN 56467