



MLS 6732612 Land

\$30,000

1.18 Acres
Finished Lot(s)

TBD E 2nd St
Ottertail MN 56571

Status: Active

Description:

Discover the perfect blend of space and convenience with this 1.18-acre property located right in town! Whether you're dreaming of building your forever home or investing in a spacious lot with tons of potential, this one checks all the boxes. Enjoy the privacy on this quiet street and elbow room of over an acre while still being just minutes from downtown. Several nearby lakes offer endless opportunities for fishing, boating, and relaxing weekends. City utilities available, easy access to major roads, and plenty of room for a home, garage, or even a garden oasis. This is your chance to have the best of both worlds—peaceful living with all the perks of being in town.

Additional Details:

Lot Acres	1.18
Lot Dimensions	158x369
School District	549
Taxes	\$182
Taxes with Assessments	\$182
Tax Year	2024

Additional Features:

Driving Directions:

From MN-108 E/ Main St, turn right on to Elm Ave, turn left on to 1st St, Stay left from Oak Ave, Property is on the left.



Listed By:
Central MN Realty LLC

Affinity Real Estate Inc. participates in the Regional Multiple Listing Service of Minnesota, Inc Broker Reciprocity (sm) program, allowing us to display other broker's listings on our website. All properties are subject to prior sale, change or withdrawal.



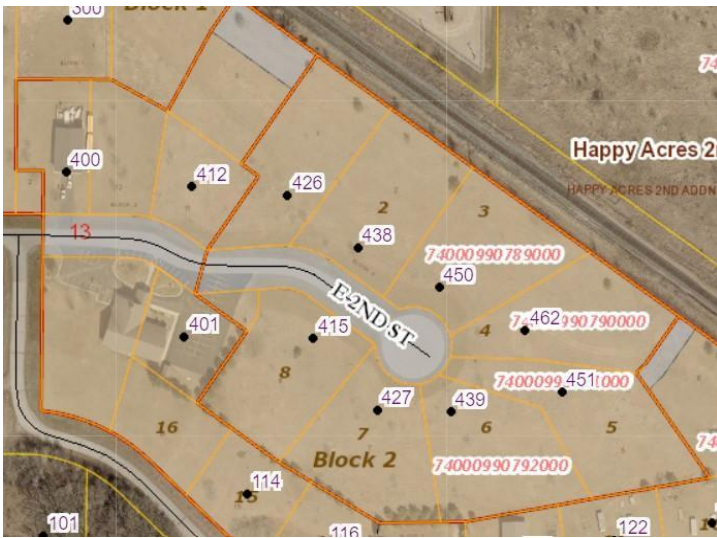
Call Affinity Real Estate

218-237-3333

info@affinityrealestate.com



Affinity Real Estate - 600 Park Avenue South - Park Rapids MN 56470



website: www.AffinityRealEstate.com | email: info@affinityrealestate.com | office: 218-237-3333 | fax: 218-237-3377



\$30,000
MLS 6732612 Land
TBD E 2nd St
Ottertail MN 56571