



MLS 6732666 Land

\$42,000

6.6 Acres
Raw Land

TBD County 52
Remer MN 56672

Status: Active

Description:

This 6.6 acre lot north of Remer offers privacy on a county road and has over 50,000 acres of Chippewa National forest to explore across the county road. There's also multiple lakes with public accesses nearby for fishing and recreational activities. With a great building site near the road this property is ready for your vision!

Additional Details:

Lot Acres	6.6
Lot Dimensions	438x660x438x660
School District	118
Taxes	\$138
Taxes with Assessments	\$138
Tax Year	2025

Additional Features:

Driving Directions:

From Remer head north 1 mile on County Rd 4 NE and turn right on County 52 NE. Continue for 7 miles and property will be on the left.



Listed By:
Keller Williams Realty Professionals

Affinity Real Estate Inc. participates in the Regional Multiple Listing Service of Minnesota, Inc Broker Reciprocity (sm) program, allowing us to display other broker's listings on our website. All properties are subject to prior sale, change or withdrawal.



Call Affinity Real Estate

218-237-3333

info@affinityrealestate.com



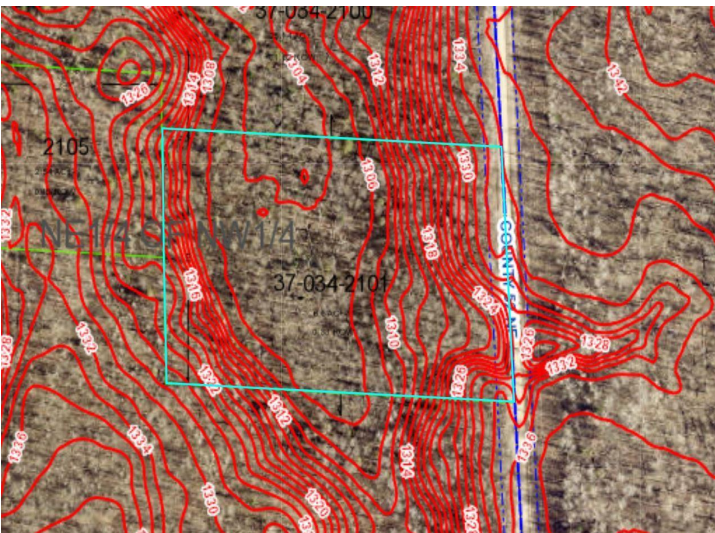
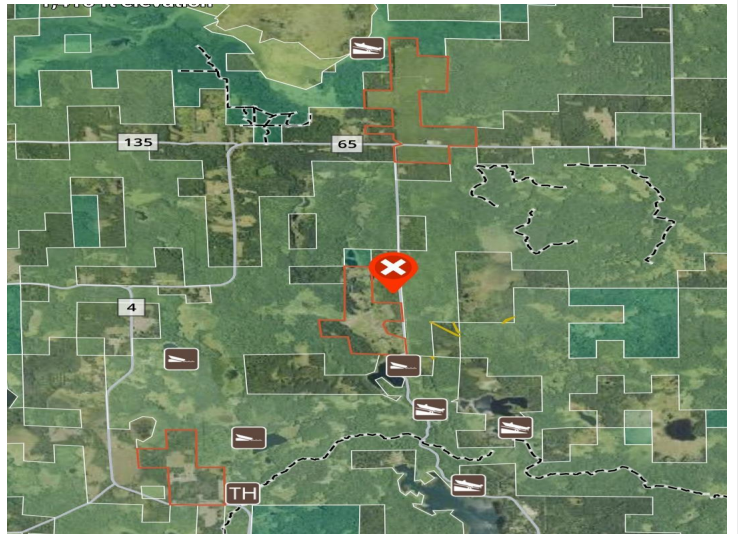
Affinity Real Estate - 600 Park Avenue South - Park Rapids MN 56470



website: www.AffinityRealEstate.com | email: info@affinityrealestate.com | office: 218-237-3333 | fax: 218-237-3377



\$42,000
MLS 6732666 Land
TBD County 52
Remer MN 56672



website: www.AffinityRealEstate.com | email: info@affinityrealestate.com | office: 218-237-3333 | fax: 218-237-3377



\$42,000
 MLS 6732666 Land
 TBD County 52
 Remer MN 56672



website: www.AffinityRealEstate.com | email: info@affinityrealestate.com | office: 218-237-3333 | fax: 218-237-3377



\$42,000
MLS 6732666 Land
TBD County 52
Remer MN 56672