



MLS 6732703 Lake Home

\$450,000

2,740 sq ft
3 bedrooms
3 baths

7047 Kingfisher Lane
Bemidji MN 56601

Waterfront: Mississippi River

Status: Active

Description:

Looking for a place on the Bemidji chain of lakes? Come check this out...situated on a beautiful 1.5 acre lot with about 125' of gorgeous frontage on the Mississippi river. From the included dock, it's a short boat ride to the west to be on Lake Bemidji with it's water sports, lakeside dining and great fishing. Or head east and you're on Stump Lake. The large, spacious home features hardwood floors and lots of room for entertaining guests, with two separate family room areas on the main level. All bedrooms and the laundry room are upstairs. The huge primary bedroom has a balcony offering a beautiful view of the yard and the river. It also has a large walk-in closet and en suite bathroom with garden tub. Inside the south entrance to the home there is an office area that could be remodeled for other purposes. Outside, in addition to the oversize 2 stall garage there is an insulated, heatable (currently uses a portable electric space heater) 12x36 building that could serve many purposes...art studio, he/she shed, heated storage etc. There's also three smaller storage sheds strategically placed around the property. Located on a dead-end road, this property offers quiet seclusion that's only a few miles from town. Schedule a showing today!

Additional Details:

Year Built	1984
Lot Acres	1.49
Lot Dimensions	APPROx 127 x 520
Garage Stalls	2
School District	31
Taxes	\$3,926
Taxes with Assessments	\$3,925
Tax Year	2025

Additional Features:

Fuel: Natural Gas, Wood **Heat:** Forced Air, Wood Stove

Driving Directions:

From the south end of Bemidji go east on Roosevelt for 3.8 miles, turn left onto Sunnyside and go north 2.8 miles to the "T", turn right onto Kingfisher and go about .1 mile. Driveway is on the left.



Listed By:
Headwaters Realty Services LLC

Affinity Real Estate Inc. participates in the Regional Multiple Listing Service of Minnesota, Inc Broker Reciprocity (sm) program, allowing us to display other broker's listings on our website. All properties are subject to prior sale, change or withdrawal.



Call Affinity Real Estate

218-237-3333

info@affinityrealestate.com



Affinity Real Estate - 600 Park Avenue South - Park Rapids MN 56470



website: www.AffinityRealEstate.com | email: info@affinityrealestate.com | office: 218-237-3333 | fax: 218-237-3377

Affinity
REAL ESTATE INC

\$450,000
MLS 6732703 Lake Home
7047 Kingfisher Lane
Bemidji MN 56601



website: www.AffinityRealEstate.com | email: info@affinityrealestate.com | office: 218-237-3333 | fax: 218-237-3377

Affinity
REAL ESTATE INC

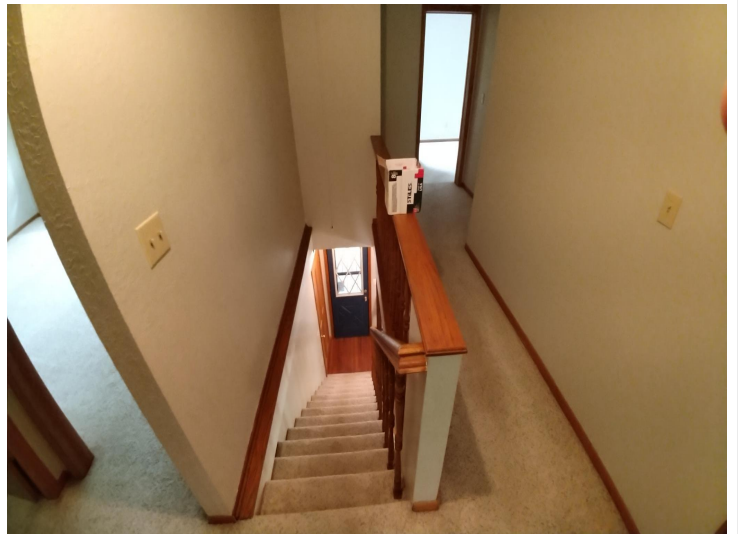
\$450,000
MLS 6732703 Lake Home
7047 Kingfisher Lane
Bemidji MN 56601



website: www.AffinityRealEstate.com | email: info@affinityrealestate.com | office: 218-237-3333 | fax: 218-237-3377



\$450,000
 MLS 6732703 Lake Home
 7047 Kingfisher Lane
 Bemidji MN 56601



website: www.AffinityRealEstate.com | email: info@affinityrealestate.com | office: 218-237-3333 | fax: 218-237-3377



\$450,000
MLS 6732703 Lake Home
7047 Kingfisher Lane
Bemidji MN 56601



website: www.AffinityRealEstate.com | email: info@affinityrealestate.com | office: 218-237-3333 | fax: 218-237-3377

Affinity
REAL ESTATE INC

\$450,000
MLS 6732703 Lake Home
7047 Kingfisher Lane
Bemidji MN 56601



website: www.AffinityRealEstate.com | email: info@affinityrealestate.com | office: 218-237-3333 | fax: 218-237-3377

Affinity
REAL ESTATE INC

\$450,000
MLS 6732703 Lake Home
7047 Kingfisher Lane
Bemidji MN 56601



website: www.AffinityRealEstate.com | email: info@affinityrealestate.com | office: 218-237-3333 | fax: 218-237-3377

Affinity
REAL ESTATE INC

\$450,000

MLS 6732703 Lake Home
7047 Kingfisher Lane
Bemidji MN 56601



website: www.AffinityRealEstate.com | email: info@affinityrealestate.com | office: 218-237-3333 | fax:218-237-3377



\$450,000
MLS 6732703 Lake Home
7047 Kingfisher Lane
Bemidji MN 56601