



MLS 6732776 Residential

\$450,000

1,986 sq ft
3 bedrooms
3 baths

12584 County 18
Brainerd MN 56401

Status: Active

Description:

Welcome to this immaculate 3-bedroom, 3-bath home with a versatile den, nestled on a stunning 2.5+ acre lot offering the perfect blend of privacy, functionality, and comfort. The property boasts a meticulously maintained, irrigated lawn surrounded by mature woods, providing both serene views and seclusion. Step inside to find a well-kept interior, ideal for everyday living and entertaining. The thoughtfully designed home features an open kitchen, dining and living area, the upper level has a primary bedroom with a large walk-in closet and bathroom, and additional bedroom and full bath. The lower level has a family room, bedroom, $\frac{3}{4}$ bath, and a den/office.

Enjoy the outdoors from your low-maintenance composite deck overlooking the peaceful, tree-lined backyard—an ideal setting for relaxation. In addition to the attached heated garage, this home includes a 20x28 heated garage/shop, a 14x11 dog kennel/run, and a 10x12 storage shed. This property offers a combination of privacy, space, and quality craftsmanship.

Additional Details:

Year Built	2002
Lot Acres	2.53
Lot Dimensions	238x451x243x449
Garage Stalls	4
School District	116
Taxes	\$1,672
Taxes with Assessments	\$1,738
Tax Year	2025

Additional Features:

Basement: Crawl Space, Finished **Fuel:** Natural Gas **Garage:** 4 **Heat:** Forced Air **Sewer:** Private Sewer, Tank with Drainage Field **Water:** Well
Air Conditioning: Central Air

Driving Directions:

From Brainerd, take State 210 West to right on County 18, to FN 12584 on right.



Listed By:
Century 21 Brainerd Realty

Affinity Real Estate Inc. participates in the Regional Multiple Listing Service of Minnesota, Inc Broker Reciprocity (sm) program, allowing us to display other broker's listings on our website. All properties are subject to prior sale, change or withdrawal.



Call Affinity Real Estate

218-237-3333

info@affinityrealestate.com



Affinity Real Estate - 600 Park Avenue South - Park Rapids MN 56470



website: www.AffinityRealEstate.com | email: info@affinityrealestate.com | office: 218-237-3333 | fax: 218-237-3377

Affinity
REAL ESTATE INC

\$450,000
MLS 6732776 Residential
12584 County 18
Brainerd MN 56401



website: www.AffinityRealEstate.com | email: info@affinityrealestate.com | office: 218-237-3333 | fax: 218-237-3377

Affinity
REAL ESTATE INC

\$450,000
MLS 6732776 Residential
12584 County 18
Brainerd MN 56401



website: www.AffinityRealEstate.com | email: info@affinityrealestate.com | office: 218-237-3333 | fax: 218-237-3377

Affinity
REAL ESTATE INC

\$450,000
MLS 6732776 Residential
12584 County 18
Brainerd MN 56401



website: www.AffinityRealEstate.com | email: info@affinityrealestate.com | office: 218-237-3333 | fax: 218-237-3377

Affinity
REAL ESTATE INC

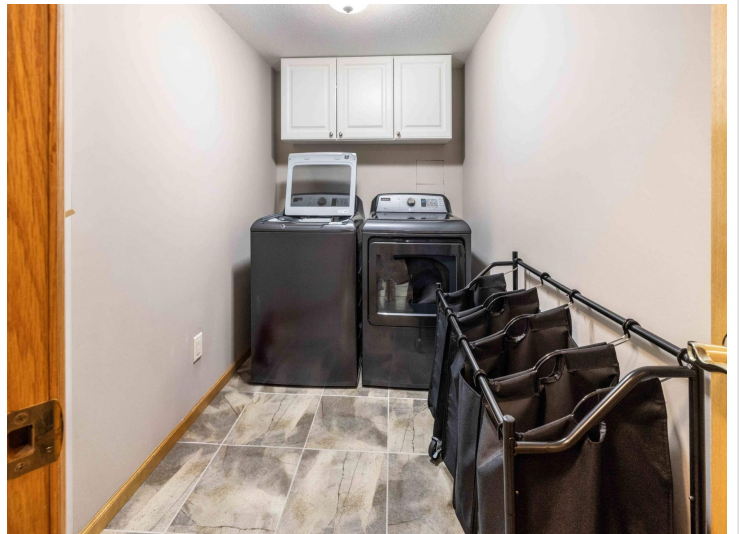
\$450,000
MLS 6732776 Residential
12584 County 18
Brainerd MN 56401



website: www.AffinityRealEstate.com | email: info@affinityrealestate.com | office: 218-237-3333 | fax: 218-237-3377

Affinity
REAL ESTATE INC

\$450,000
MLS 6732776 Residential
12584 County 18
Brainerd MN 56401



website: www.AffinityRealEstate.com | email: info@affinityrealestate.com | office: 218-237-3333 | fax: 218-237-3377

Affinity
REAL ESTATE INC

\$450,000
MLS 6732776 Residential
12584 County 18
Brainerd MN 56401



website: www.AffinityRealEstate.com | email: info@affinityrealestate.com | office: 218-237-3333 | fax: 218-237-3377



\$450,000
 MLS 6732776 Residential
 12584 County 18
 Brainerd MN 56401



website: www.AffinityRealEstate.com | email: info@affinityrealestate.com | office: 218-237-3333 | fax: 218-237-3377



\$450,000
 MLS 6732776 Residential
 12584 County 18
 Brainerd MN 56401