



MLS 6733159 Residential

**\$369,900**

1,897 sq ft  
3 bedrooms  
2 baths

6991 County 37  
Walker MN 56484

Status: Active

#### Description:

Don't miss this private meticulously cared for split-level home featuring 3 bedrooms and 2 bathrooms, 3 car attached 8x10 storage shed and new 16x24 detached garage. Perfectly situated on 2.6+ acres just minutes from Walker and its beautiful lake country and amenities. This home features a vaulted ceiling, solid oak doors and trim work throughout, large primary bedroom with walk in closet & walk thru primary full bath. Relax by the main level free standing fireplace surrounded by natural light and take in the views of mother nature. Kitchen has countertop seating, granite counters, maple cabinetry and hardwood flooring. Enjoy the newly finished basement, which boasts a custom-built bar, tongue and groove, new flooring, and more! Walk out sliders lead you to your private oasis on the new outdoor paver patio. Sit around the cozy outdoor firepit and take in the freshly landscaped yard with lots of perennials and beautiful hardwoods - perfect for entertaining and relaxing. Recent updates include a brand-new metal detached garage, a recently finished basement, and newly paved roads (County Road 50). This home is in an ideal location close to Walker, Nevis Akeley and has easy access to the Heartland and Paul Bunyan State trail systems. Surrounded by beautiful nature, this home offers both convenience, privacy and accessibility to all the area has to offer! Call today to schedule your private showing!

#### Additional Details:

Year Built	2008
Lot Acres	2.62
Lot Dimensions	149x687x157x447
Garage Stalls	4
School District	113
Taxes	\$1,156
Taxes with Assessments	\$1,222
Tax Year	2025

#### Additional Features:

**Basement:** Block, Daylight/Lookout Windows, Drain Tiled, Egress Window(s), Finished, Full, Sump Pump, Walkout **Fuel:** Propane **Garage:** 4  
**Heat:** Forced Air, Fireplace(s) **Sewer:** Private Sewer, Septic System Compliant - Yes, Tank with Drainage Field **Water:** Drilled, Well **Air**  
**Conditioning:** Central Air

#### Driving Directions:

From Hwy. 34 for 2 miles to County 50 NW. Turn left onto County 50 NW. Go .1 miles to fire number 6991 on the Kurilla Real Estate LTD



Affinity Real Estate Inc. participates in the Regional Multiple Listing Service of Minnesota, Inc Broker Reciprocity (sm) program, allowing us to display other broker's listings on our website. All properties are subject to prior sale, change or withdrawal.



**Call Affinity Real Estate**

**218-237-3333**

**info@affinityrealestate.com**



**Affinity Real Estate - 600 Park Avenue South - Park Rapids MN 56470**



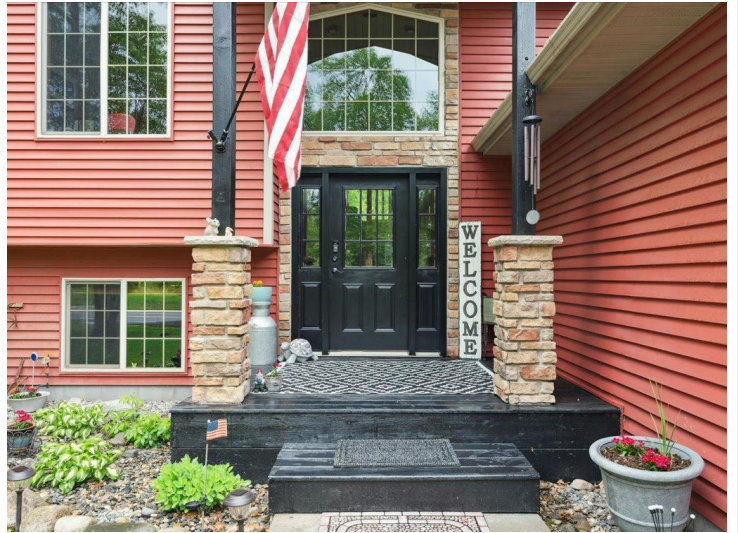


website: [www.AffinityRealEstate.com](http://www.AffinityRealEstate.com) | email: [info@affinityrealestate.com](mailto:info@affinityrealestate.com) | office: 218-237-3333 | fax: 218-237-3377

**Affinity**  
REAL ESTATE INC

**\$369,900**  
MLS 6733159 Residential  
6991 County 37  
Walker MN 56484





website: [www.AffinityRealEstate.com](http://www.AffinityRealEstate.com) | email: [info@affinityrealestate.com](mailto:info@affinityrealestate.com) | office: 218-237-3333 | fax: 218-237-3377

**Affinity**  
REAL ESTATE INC

**\$369,900**  
MLS 6733159 Residential  
6991 County 37  
Walker MN 56484



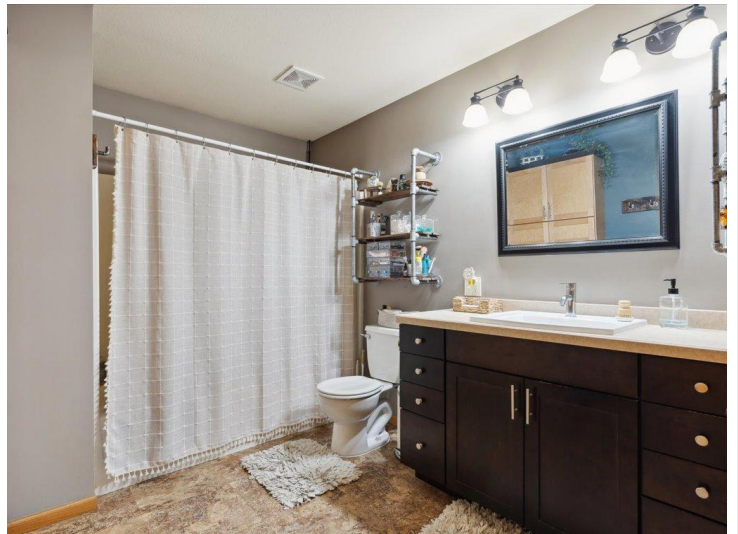


website: [www.AffinityRealEstate.com](http://www.AffinityRealEstate.com) | email: [info@affinityrealestate.com](mailto:info@affinityrealestate.com) | office: 218-237-3333 | fax: 218-237-3377

**Affinity**  
REAL ESTATE INC

**\$369,900**  
MLS 6733159 Residential  
6991 County 37  
Walker MN 56484



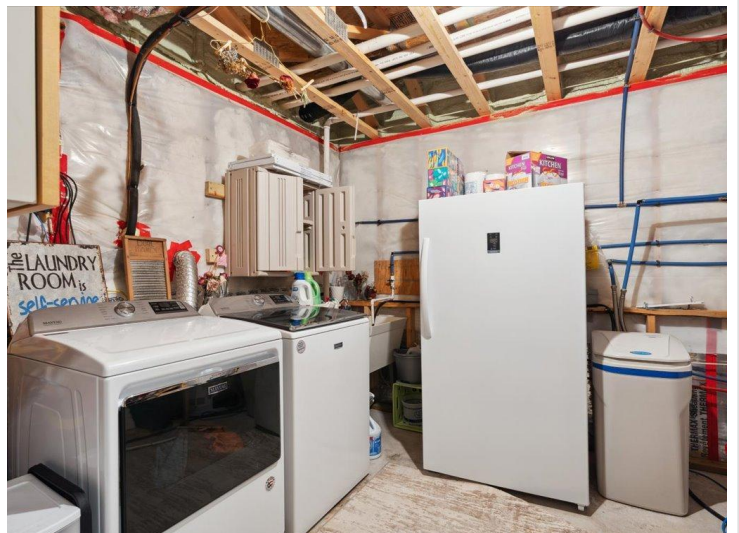


website: [www.AffinityRealEstate.com](http://www.AffinityRealEstate.com) | email: [info@affinityrealestate.com](mailto:info@affinityrealestate.com) | office: 218-237-3333 | fax: 218-237-3377

**Affinity**  
REAL ESTATE INC

**\$369,900**  
MLS 6733159 Residential  
6991 County 37  
Walker MN 56484





website: [www.AffinityRealEstate.com](http://www.AffinityRealEstate.com) | email: [info@affinityrealestate.com](mailto:info@affinityrealestate.com) | office: 218-237-3333 | fax: 218-237-3377

**Affinity**  
REAL ESTATE INC

**\$369,900**  
MLS 6733159 Residential  
6991 County 37  
Walker MN 56484





website: [www.AffinityRealEstate.com](http://www.AffinityRealEstate.com) | email: [info@affinityrealestate.com](mailto:info@affinityrealestate.com) | office: 218-237-3333 | fax: 218-237-3377

**Affinity**  
REAL ESTATE INC

**\$369,900**  
MLS 6733159 Residential  
6991 County 37  
Walker MN 56484





website: [www.AffinityRealEstate.com](http://www.AffinityRealEstate.com) | email: [info@affinityrealestate.com](mailto:info@affinityrealestate.com) | office: 218-237-3333 | fax: 218-237-3377

**Affinity**  
REAL ESTATE INC

**\$369,900**  
MLS 6733159 Residential  
6991 County 37  
Walker MN 56484





TOTAL: 1897 sq. ft.  
BELOW GROUND: 888 sq. ft., FLOOR 2: 1009 sq. ft.  
EXCLUDED AREAS: GARAGE: 618 sq. ft.  
WALLS: 185 sq. ft.  
Size And Dimensions Are Approximate. Actual Measurements May Vary.



TOTAL: 1897 sq. ft.  
BELOW GROUND: 888 sq. ft., FLOOR 2: 1009 sq. ft.  
EXCLUDED AREAS: GARAGE: 618 sq. ft.  
WALLS: 185 sq. ft.  
Size And Dimensions Are Approximate. Actual Measurements May Vary.



TOTAL: 1897 sq. ft.  
BELOW GROUND: 888 sq. ft., FLOOR 2: 1009 sq. ft.  
EXCLUDED AREAS: GARAGE: 618 sq. ft.  
WALLS: 185 sq. ft.  
Size And Dimensions Are Approximate. Actual Measurements May Vary.

website: [www.AffinityRealEstate.com](http://www.AffinityRealEstate.com) | email: [info@affinityrealestate.com](mailto:info@affinityrealestate.com) | office: 218-237-3333 | fax: 218-237-3377



**\$369,900**  
MLS 6733159 Residential  
6991 County 37  
Walker MN 56484