



MLS 6733268 Lake Land

\$111,449

Description:

A captivating 3.56-acre haven nestled along the tranquil banks of the Crow Wing River. This picturesque property offers an enchanting blend of natural beauty and potential, perfect for crafting your dream retreat. With its expansive lot size and stunning surroundings, this parcel presents a rare opportunity to create a private sanctuary amidst nature's splendor. Immerse yourself in the scenic vistas and endless possibilities that await on this gorgeous riverside oasis.

Additional Details:

Lot Acres	3.56
Lot Dimensions	151x1038
School District	2170
Taxes	\$210
Taxes with Assessments	\$210
Tax Year	2025

Additional Features:

Driving Directions:

From Motley head North on US-10 W, Turn right onto MN-210 E for 0.3 miles, turn left onto MN-64 N for 1.9 miles, turn left onto 120th Street SW for 4 miles, turn right onto County 32 SW for 0.1 mile on left side of road.



Listed By:
Weichert REALTORS Tower Properties

Affinity Real Estate Inc. participates in the Regional Multiple Listing Service of Minnesota, Inc Broker Reciprocity (sm) program, allowing us to display other broker's listings on our website. All properties are subject to prior sale, change or withdrawal.



Call Affinity Real Estate

218-237-3333

info@affinityrealestate.com



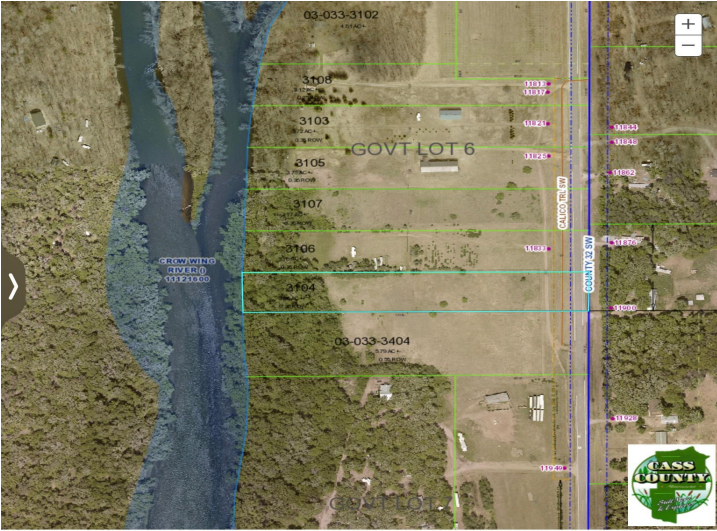
Affinity Real Estate - 600 Park Avenue South - Park Rapids MN 56470



website: www.AffinityRealEstate.com | email: info@affinityrealestate.com | office: 218-237-3333 | fax:218-237-3377



\$111,449
MLS 6733268 Lake Land
TBD Calico Trail
Motley MN 56466



website: www.AffinityRealEstate.com | email: info@affinityrealestate.com | office: 218-237-3333 | fax:218-237-3377



\$111,449
MLS 6733268 Lake Land
TBD Calico Trail
Motley MN 56466



website: www.AffinityRealEstate.com | email: info@affinityrealestate.com | office: 218-237-3333 | fax: 218-237-3377

Affinity
REAL ESTATE INC

\$111,449
MLS 6733268 Lake Land
TBD Calico Trail
Motley MN 56466



website: www.AffinityRealEstate.com | email: info@affinityrealestate.com | office: 218-237-3333 | fax:218-237-3377



\$111,449
MLS 6733268 Lake Land
TBD Calico Trail
Motley MN 56466



website: www.AffinityRealEstate.com | email: info@affinityrealestate.com | office: 218-237-3333 | fax:218-237-3377



\$111,449
MLS 6733268 Lake Land
TBD Calico Trail
Motley MN 56466



website: www.AffinityRealEstate.com | email: info@affinityrealestate.com | office: 218-237-3333 | fax:218-237-3377



\$111,449
MLS 6733268 Lake Land
TBD Calico Trail
Motley MN 56466