

71150558



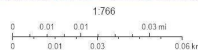
MLS 6733392 Land

**\$89,900**5 Acres  
Raw LandParcel E Rogue Way  
Ironton MN 56455

Status: Active



June 4, 2025



Craw Wing MLS Property Information

**Description:**

Nestled in the heart of the Cuyuna recreational area, this 5-acre wooded parcel offers the perfect blend of privacy and adventure. Conveniently located between Deerwood and Brainerd, this Ironton property provides easy access to fine dining, biking, hiking, kayaking, fishing, and more. With high-speed internet available and no covenants or restrictions, this private building site has walkout potential and is ready for your dream home or retreat!

**Additional Details:**

Lot Acres	5
Lot Dimensions	327x666
School District	182
Taxes	\$40
Taxes with Assessments	\$40
Tax Year	2025

**Additional Features:****Driving Directions:**

From Brainerd East on Hwy 210 to right on (Deerwood Shortcut ) CR 12. East to address 19214 County Road 12, (Northside of Cty rd 12) Ironton. Continue down the driveway through the gate and stay right follow to sign on right.

Listed By:  
Keller Williams Realty Professionals

Affinity Real Estate Inc. participates in the Regional Multiple Listing Service of Minnesota, Inc Broker Reciprocity (sm) program, allowing us to display other broker's listings on our website. All properties are subject to prior sale, change or withdrawal.



Call Affinity Real Estate

**218-237-3333****info@affinityrealestate.com**

Affinity Real Estate - 600 Park Avenue South - Park Rapids MN 56470



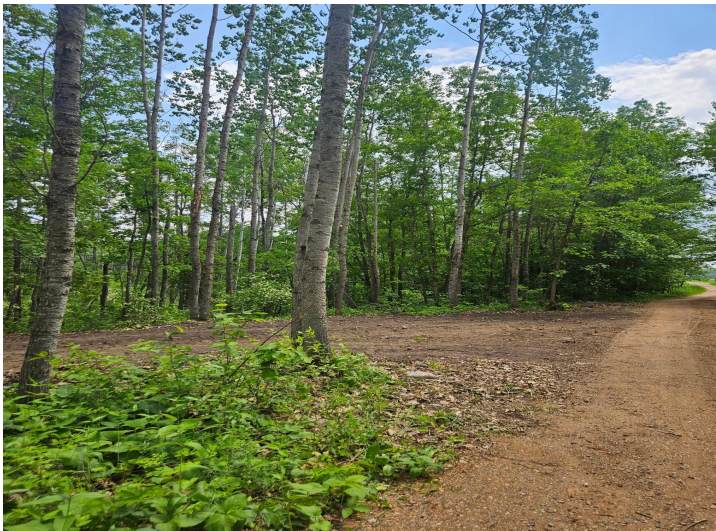
71150558



June 4, 2025

0 5,766  
0 0.01 0.05 0.08 km

Click Here for Property Information



website: [www.AffinityRealEstate.com](http://www.AffinityRealEstate.com) | email: [info@affinityrealestate.com](mailto:info@affinityrealestate.com) | office: 218-237-3333 | fax: 218-237-3377

**Affinity**  
REAL ESTATE INC

**\$89,900**

MLS 6733392 Land  
Parcel E Rogue Way  
Ironton MN 56455





website: [www.AffinityRealEstate.com](http://www.AffinityRealEstate.com) | email: [info@affinityrealestate.com](mailto:info@affinityrealestate.com) | office: 218-237-3333 | fax: 218-237-3377



**\$89,900**  
MLS 6733392 Land  
Parcel E Rogue Way  
Ironton MN 56455





website: [www.AffinityRealEstate.com](http://www.AffinityRealEstate.com) | email: [info@affinityrealestate.com](mailto:info@affinityrealestate.com) | office: 218-237-3333 | fax: 218-237-3377



**\$89,900**  
MLS 6733392 Land  
Parcel E Rogue Way  
Ironton MN 56455