



MLS 6733490 Residential

\$112,000

1,816 sq ft
3 bedrooms
2 baths

11681 410th Street
Fertile MN 56540

Status: Active

Description:

and an open floorplan all on one level! Over 3.5 acres with 2.5 being wooded or natural. Located less than 2 miles out of Fertile this is a great opportunity!

Additional Details:

Year Built	2006
Lot Acres	3.65
Lot Dimensions	276x576
Garage Stalls	2
School District	599
Taxes	\$1,018
Taxes with Assessments	\$1,348
Tax Year	2024

Additional Features:

Basement: None **Fuel:** Propane **Garage:** 2 **Heat:** Forced Air **Sewer:** Private Sewer **Water:** Well **Air Conditioning:** None

Driving Directions:

From Fertile, follow HW 200 N. for 1.8 miles. Turn East (right) onto 410 St. SW and follow it for 0.3 miles. Sign will be visible on the right.



Listed By:
Juve Real Estate

Affinity Real Estate Inc. participates in the Regional Multiple Listing Service of Minnesota, Inc Broker Reciprocity (sm) program, allowing us to display other broker's listings on our website. All properties are subject to prior sale, change or withdrawal.



Call Affinity Real Estate

218-237-3333

info@affinityrealestate.com



Affinity Real Estate - 600 Park Avenue South - Park Rapids MN 56470



website: www.AffinityRealEstate.com | email: info@affinityrealestate.com | office: 218-237-3333 | fax: 218-237-3377



\$112,000
MLS 6733490 Residential
11681 410th Street
Fertile MN 56540



website: www.AffinityRealEstate.com | email: info@affinityrealestate.com | office: 218-237-3333 | fax: 218-237-3377



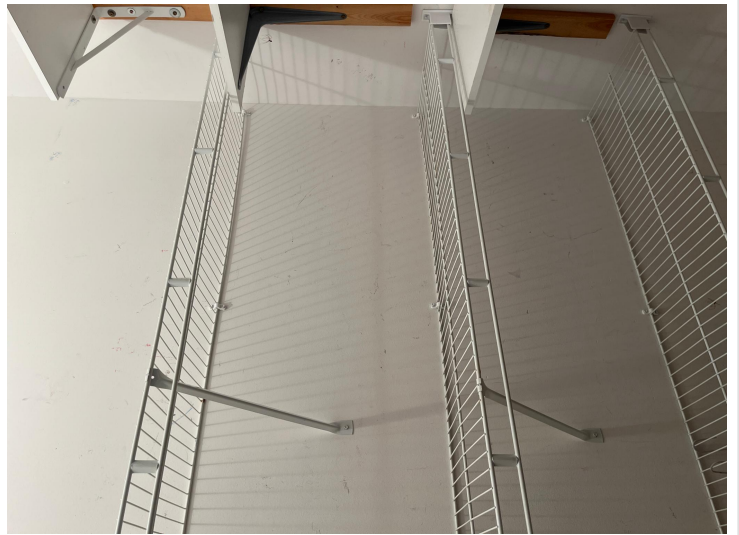
\$112,000
 MLS 6733490 Residential
 11681 410th Street
 Fertile MN 56540



website: www.AffinityRealEstate.com | email: info@affinityrealestate.com | office: 218-237-3333 | fax: 218-237-3377

Affinity
REAL ESTATE INC

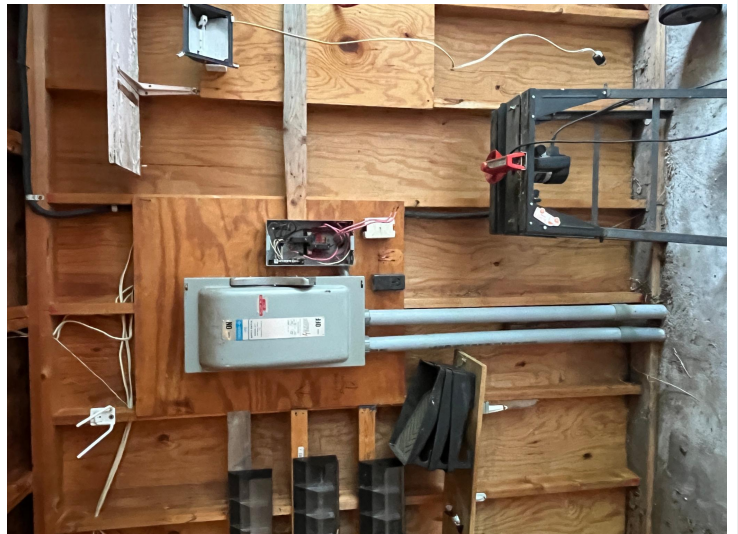
\$112,000
MLS 6733490 Residential
11681 410th Street
Fertile MN 56540



website: www.AffinityRealEstate.com | email: info@affinityrealestate.com | office: 218-237-3333 | fax: 218-237-3377



\$112,000
 MLS 6733490 Residential
 11681 410th Street
 Fertile MN 56540



website: www.AffinityRealEstate.com | email: info@affinityrealestate.com | office: 218-237-3333 | fax: 218-237-3377

Affinity
REAL ESTATE INC

\$112,000
MLS 6733490 Residential
11681 410th Street
Fertile MN 56540



website: www.AffinityRealEstate.com | email: info@affinityrealestate.com | office: 218-237-3333 | fax: 218-237-3377



\$112,000
MLS 6733490 Residential
11681 410th Street
Fertile MN 56540