



MLS 6733536 Land

**\$259,900**

6.28 Acres  
Finished Lot(s)

17383 Levi Lane  
Crosslake MN 56442

Status: Active

**Description:**

2 Adjacent building lots with tons of potential. The 4 acre parcel includes a 2023 Built 42x62 post frame building with 16' sidewalls, 200 amp electrical panel, and 20' of vaulted trusses that could be made into a "shouse" with living quarters in the upper level. Additional 2.8 acre parcel ready for your building plans. Both lots contain several potential building & septic sites, natural gas available, & are close to the many lakes in the area.

**Additional Details:**

Lot Acres	6.28
Lot Dimensions	irregular
School District	186
Taxes	\$295
Taxes with Assessments	\$295
Tax Year	2025

**Additional Features:**

**Driving Directions:**

From Crosslake take Co Rd 3 to Co Rd 37 to left (east) on Co Rd 36 to Left on Bonnie Lakes Rd. Turn onto Levi lane.



Listed By:  
RE/MAX Advantage Plus

Affinity Real Estate Inc. participates in the Regional Multiple Listing Service of Minnesota, Inc Broker Reciprocity (sm) program, allowing us to display other broker's listings on our website. All properties are subject to prior sale, change or withdrawal.



**Call Affinity Real Estate**

**218-237-3333**

**info@affinityrealestate.com**



**Affinity Real Estate - 600 Park Avenue South - Park Rapids MN 56470**



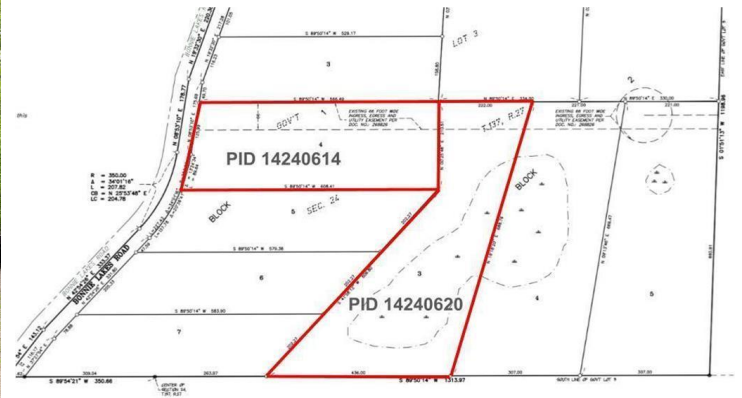


website: [www.AffinityRealEstate.com](http://www.AffinityRealEstate.com) | email: [info@affinityrealestate.com](mailto:info@affinityrealestate.com) | office: 218-237-3333 | fax: 218-237-3377



**\$259,900**  
 MLS 6733536 Land  
 17383 Levi Lane  
 Crosslake MN 56442





website: [www.AffinityRealEstate.com](http://www.AffinityRealEstate.com) | email: [info@affinityrealestate.com](mailto:info@affinityrealestate.com) | office: 218-237-3333 | fax: 218-237-3377



**\$259,900**  
 MLS 6733536 Land  
 17383 Levi Lane  
 Crosslake MN 56442