



MLS 6733590 Lake Land

\$299,900

Description:

The Scorpion Legacy Properties are a once-in-a-generation opportunity to own a piece of the Northwoods—offered for the first time ever! This rare vacant lot on Lake Mary's South Shore Drive is part of a family-held collection of land. Located between the addresses of 22910 and 24942 South Shore Drive Emily this has beautiful big water views. Surveyor will be verifying iron corner monuments for future buyer. Seller also has listed another lot on South Shore Drive MLS# 6733516 These wooded sanctuaries provide the perfect canvas to build something truly special—offering beauty, flexibility, and boundless potential in a setting that inspires.

These properties are more than land—they're legacy.

"The Scorpion Legacy Properties are a rare, family-held collection of lands in Crow Wing and Cass counties—deeply rooted in faith, ingenuity, and a generational connection to the Northwoods. More than just real estate, these parcels reflect the life and legacy of Dick Harrison, whose vision transformed overlooked landscapes into enduring sanctuaries now ready for new stories to unfold."


If you've been looking for that perfect spot to build your getaway or forever home—surrounded by nature, steeped in heritage, and within arm's reach of everything Emily and the lakes area has to offer—your opportunity has arrived.

Bring your builder, your vision, and your sense of adventure. Let's write the next chapter of this legacy—starting with you.

Additional Details:

Lot Acres	0.55
Lot Dimensions	113x245x91x220
School District	182
Taxes	\$1,620
Taxes with Assessments	\$1,620
Tax Year	2024

Additional Features:



Listed By:
eXp Realty

From Affinity Real Estate Inc. participating in the National Multiple Listing Service of Minnesota, Inc Broker Reciprocity (sm) program, allowing us to display other broker's listings on our website. All properties are subject to prior sale, change or withdrawal.



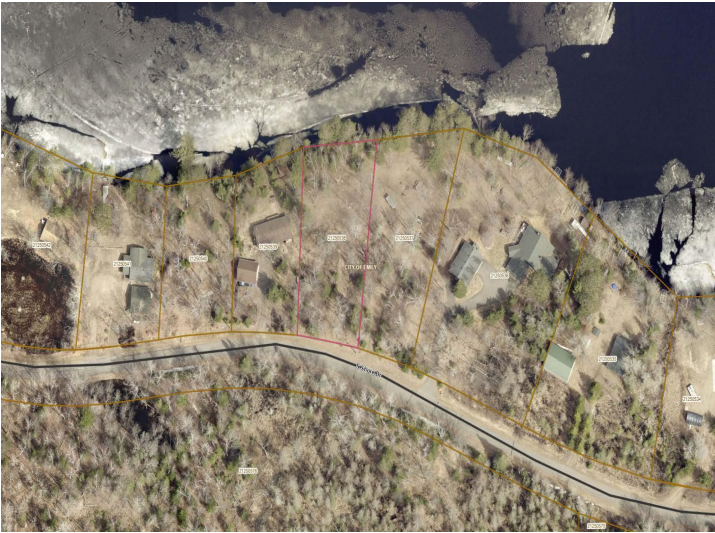
Call Affinity Real Estate

218-237-3333

info@affinityrealestate.com



Affinity Real Estate - 600 Park Avenue South - Park Rapids MN 56470



website: www.AffinityRealEstate.com | email: info@affinityrealestate.com | office: 218-237-3333 | fax:218-237-3377



\$299,900

MLS 6733590 Lake Land
TBD South Shore Drive
Emily MN 56447