



MLS 6733638 Lake Land

\$99,900

Description:

A rare lot offering on highly regarded Big Mantrap Lake. The setting is private and bordered by some of the most beautiful state land you will ever see. Features 108ft of hard bottom frontage, mature trees and the dock is included. Big Mantrap is loaded with character, has miles of undeveloped shoreline and is known for its world class Muskie fishing. A true gateway to the north and it all begins here!

Additional Details:

Lot Acres	0.38
Lot Dimensions	108 x 167 x 101 x 150
School District	309
Taxes	\$448
Taxes with Assessments	\$448
Tax Year	2025

Additional Features:

Driving Directions:

From Emmaville: Go East on CR 24 to a left on Jewel Dr. Follow for < 3 miles to a left on Jewel Trail. Proceed to end of road.



Listed By:
Affinity Real Estate Inc.

Affinity Real Estate Inc. participates in the Regional Multiple Listing Service of Minnesota, Inc Broker Reciprocity (sm) program, allowing us to display other broker's listings on our website. All properties are subject to prior sale, change or withdrawal.



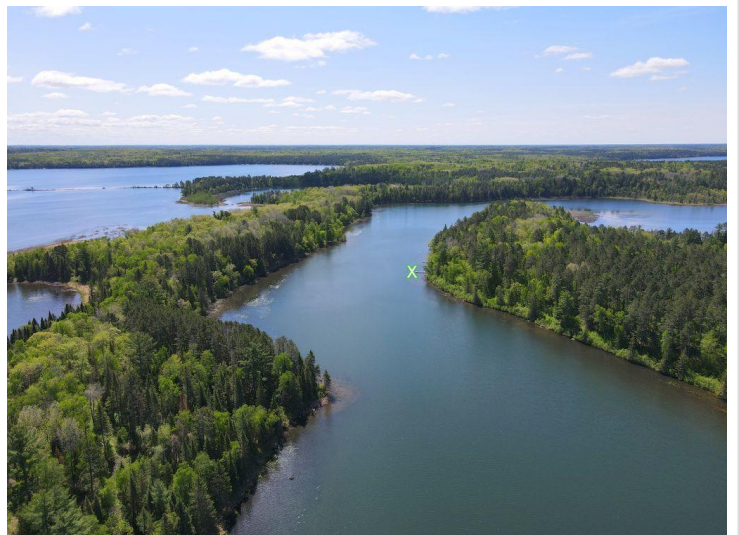
Call Affinity Real Estate

218-237-3333

info@affinityrealestate.com



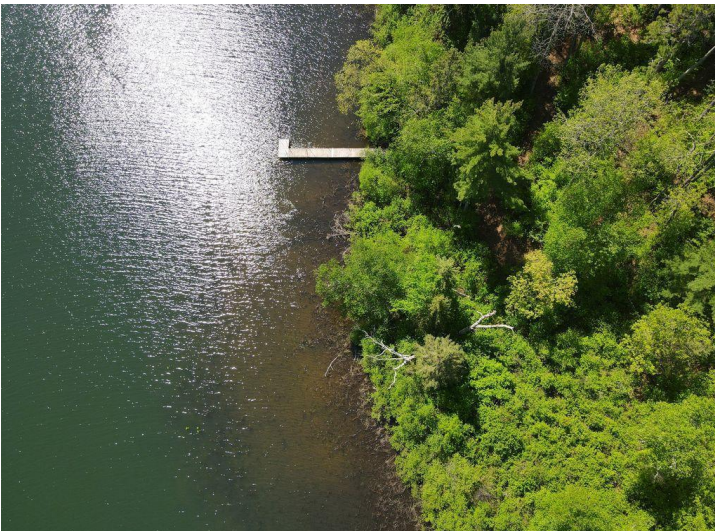
Affinity Real Estate - 600 Park Avenue South - Park Rapids MN 56470



website: www.AffinityRealEstate.com | email: info@affinityrealestate.com | office: 218-237-3333 | fax: 218-237-3377



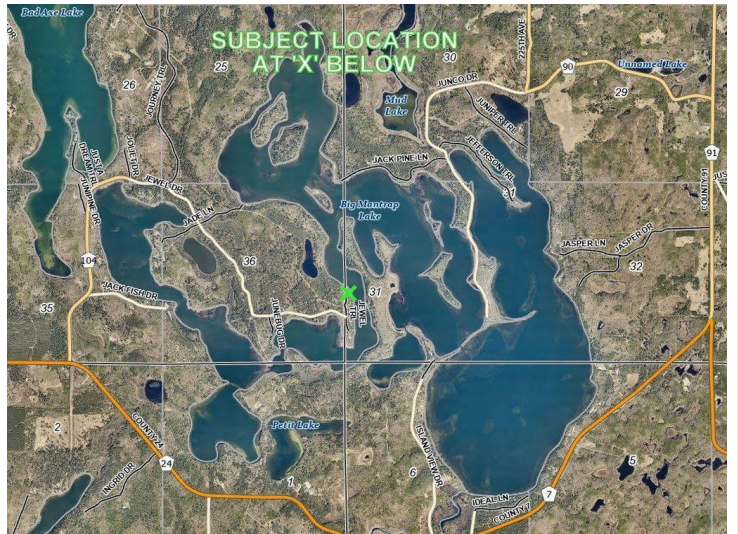
\$99,900
 MLS 6733638 Lake Land
 TBD Jewel Trail
 Park Rapids MN 56470



website: www.AffinityRealEstate.com | email: info@affinityrealestate.com | office: 218-237-3333 | fax: 218-237-3377



\$99,900
 MLS 6733638 Lake Land
 TBD Jewel Trail
 Park Rapids MN 56470



website: www.AffinityRealEstate.com | email: info@affinityrealestate.com | office: 218-237-3333 | fax: 218-237-3377



\$99,900
 MLS 6733638 Lake Land
 TBD Jewel Trail
 Park Rapids MN 56470