



MLS 6733651 Residential

\$275,000

1,901 sq ft
4 bedrooms
2 baths

2247 State 84
Pine River MN 56474

Status: Pending

Description:

Move-in ready 4-bedroom home on just under 5 wooded acres, offering privacy, space, and updates throughout. Located just minutes from downtown Pine River, yet far enough out to enjoy peace and room to roam. The property features tree stands and proven hunting grounds where large deer have been harvested.

Exterior updates include a new roof, LP SmartSide siding, and custom cedar accents. Enjoy the outdoors with a spacious deck, porch, concrete patio, and backyard firepit. Inside you'll find vinyl flooring throughout, custom woodwork, and a beautifully finished basement complete with a rec room, built-in bar, and a walk-in double shower in the lower-level bath. Additional highlights include an insulated, oversized two-stall garage and a large custom shed with endless possibilities—ideal for storage, a she shed, workshop, or playhouse.

This unique property offers the best of both worlds: country living with convenient access to town amenities. Schedule a showing today!

Additional Details:

Year Built	1979
Lot Acres	4.96
Lot Dimensions	165x1324x165x1324
Garage Stalls	2
School District	2174
Taxes	\$842
Taxes with Assessments	\$908
Tax Year	2025

Additional Features:

Basement: Finished **Fuel:** Natural Gas **Garage:** 2 **Heat:** Forced Air **Sewer:** Private Sewer **Water:** Drilled **Air Conditioning:** Central Air

Driving Directions:

At the 371 stoplight in Pine River turn on Barclay AVE. to the T Left on Hwy 84. house on the left side



Listed By:
Central MN Realty LLC

Affinity Real Estate Inc. participates in the Regional Multiple Listing Service of Minnesota, Inc Broker Reciprocity (sm) program, allowing us to display other broker's listings on our website. All properties are subject to prior sale, change or withdrawal.



Call Affinity Real Estate

218-237-3333

info@affinityrealestate.com



Affinity Real Estate - 600 Park Avenue South - Park Rapids MN 56470



website: www.AffinityRealEstate.com | email: info@affinityrealestate.com | office: 218-237-3333 | fax: 218-237-3377



\$275,000
 MLS 6733651 Residential
 2247 State 84
 Pine River MN 56474



website: www.AffinityRealEstate.com | email: info@affinityrealestate.com | office: 218-237-3333 | fax: 218-237-3377

Affinity
REAL ESTATE INC

\$275,000
MLS 6733651 Residential
2247 State 84
Pine River MN 56474



website: www.AffinityRealEstate.com | email: info@affinityrealestate.com | office: 218-237-3333 | fax: 218-237-3377



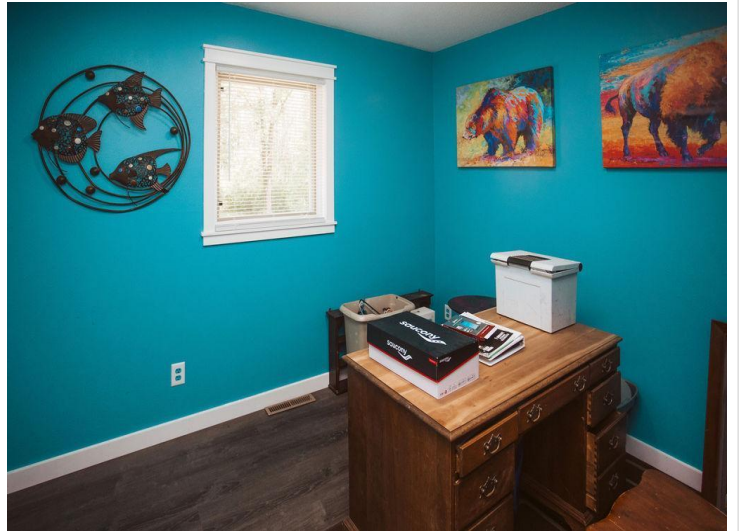
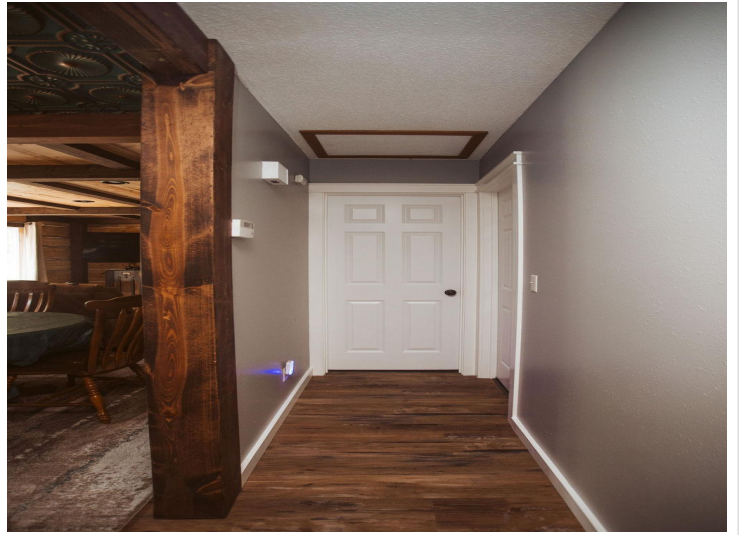
\$275,000
 MLS 6733651 Residential
 2247 State 84
 Pine River MN 56474



website: www.AffinityRealEstate.com | email: info@affinityrealestate.com | office: 218-237-3333 | fax: 218-237-3377

Affinity
REAL ESTATE INC

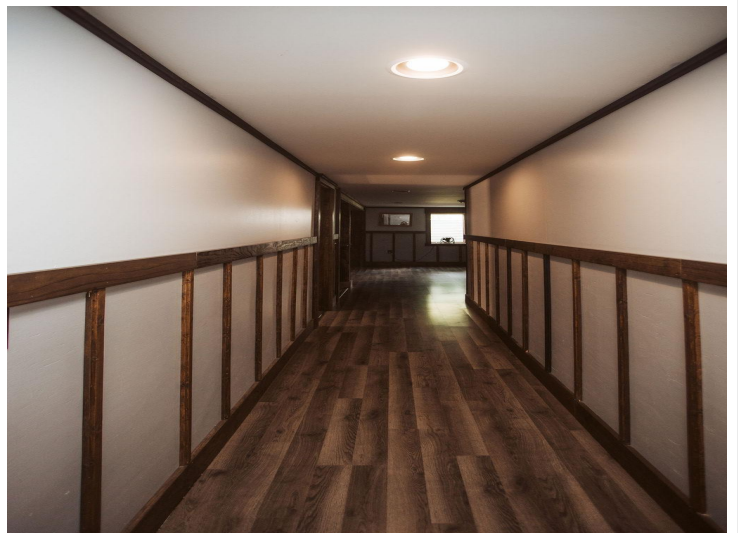
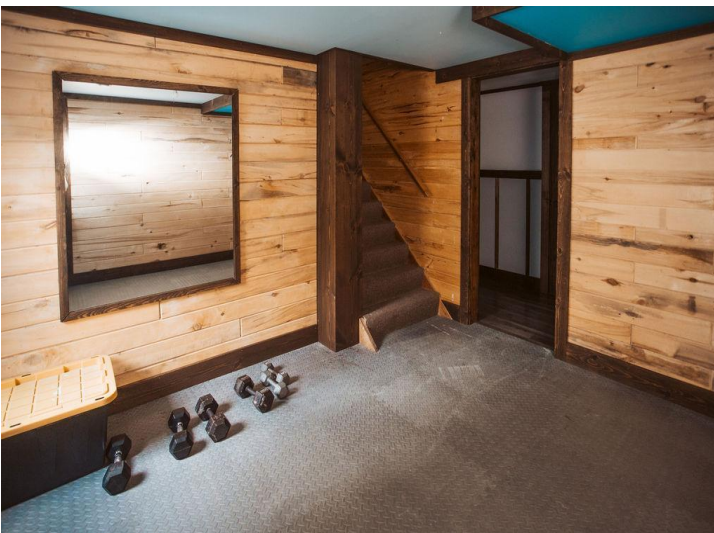
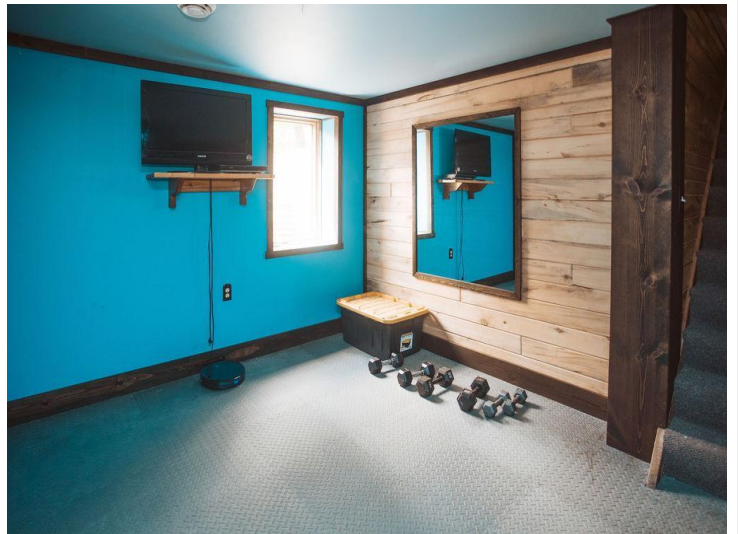
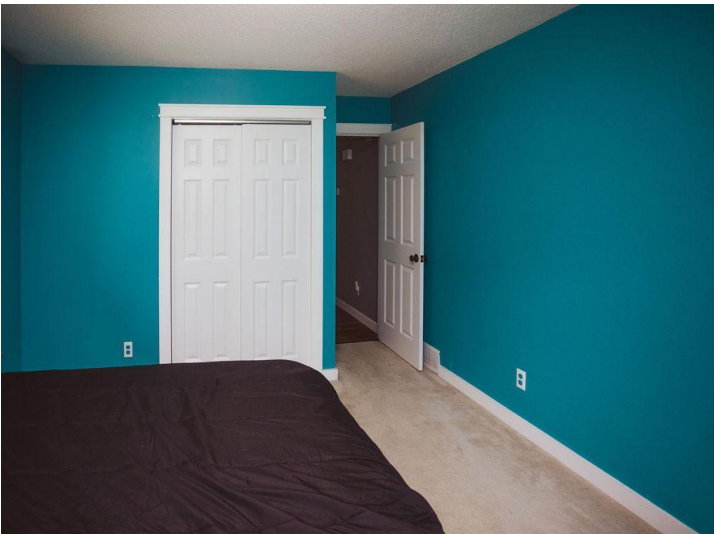
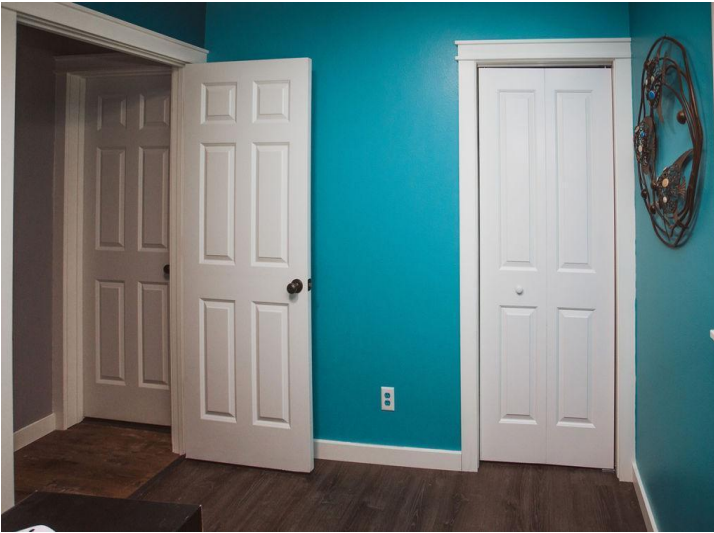
\$275,000
MLS 6733651 Residential
2247 State 84
Pine River MN 56474



website: www.AffinityRealEstate.com | email: info@affinityrealestate.com | office: 218-237-3333 | fax: 218-237-3377

Affinity
REAL ESTATE INC

\$275,000
MLS 6733651 Residential
2247 State 84
Pine River MN 56474



website: www.AffinityRealEstate.com | email: info@affinityrealestate.com | office: 218-237-3333 | fax: 218-237-3377



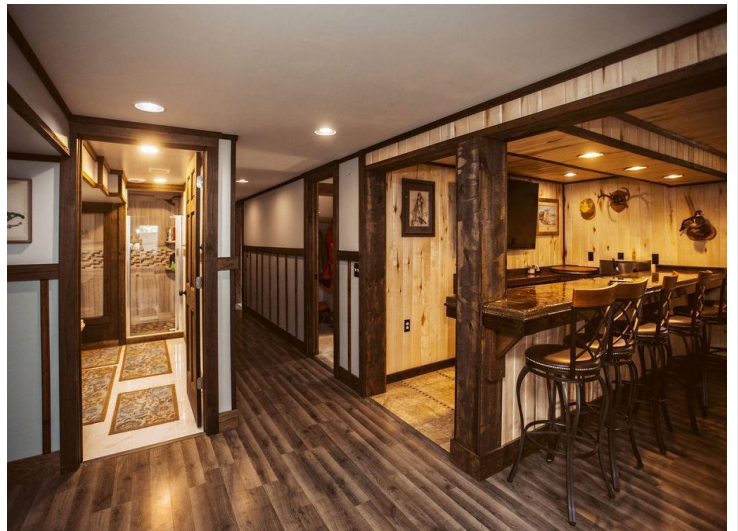
\$275,000
MLS 6733651 Residential
2247 State 84
Pine River MN 56474



website: www.AffinityRealEstate.com | email: info@affinityrealestate.com | office: 218-237-3333 | fax: 218-237-3377



\$275,000
MLS 6733651 Residential
2247 State 84
Pine River MN 56474



website: www.AffinityRealEstate.com | email: info@affinityrealestate.com | office: 218-237-3333 | fax: 218-237-3377

Affinity
REAL ESTATE INC

\$275,000
MLS 6733651 Residential
2247 State 84
Pine River MN 56474



website: www.AffinityRealEstate.com | email: info@affinityrealestate.com | office: 218-237-3333 | fax: 218-237-3377



\$275,000
MLS 6733651 Residential
2247 State 84
Pine River MN 56474