



MLS 6733713 Residential

**\$259,900**

2,100 sq ft  
3 bedrooms  
3 baths

471 Tyrol Drive  
Brainerd MN 56401

Status: Pending

**Description:**

Stylish three-bedroom, three-bath home in a quiet Brainerd neighborhood. Numerous recent updates. Generous room sizes, three-season porch, a full basement with a family room, an extra room for storage or finish as you desire, landscaped yard, two-car attached garage, and A NEW ROOF. Ideally located close to schools, Brainerd Hospital, Essentia Health Sports Center, shopping, and several fine and casual dining options.

**Additional Details:**

Year Built	1956
Lot Acres	0.2
Lot Dimensions	100x102x18x109x65
Garage Stalls	2
School District	181
Taxes	\$2,057
Taxes with Assessments	\$2,082
Tax Year	2025

**Additional Features:**

**Basement:** Block, Daylight/Lookout Windows, Full, Partially Finished **Fuel:** Natural Gas **Garage:** 2 **Heat:** Baseboard, Boiler, Hot Water **Sewer:** City Sewer/Connected **Water:** City Water/Connected **Air Conditioning:** Central Air

**Driving Directions:**

From Brainerd, N on Washington Street (Highway 210) to Right on NW 2nd Street to Right on Tyrol Drive to house and sign at 471.



Listed By:  
Kurilla Real Estate LTD

Affinity Real Estate Inc. participates in the Regional Multiple Listing Service of Minnesota, Inc Broker Reciprocity (sm) program, allowing us to display other broker's listings on our website. All properties are subject to prior sale, change or withdrawal.



**Call Affinity Real Estate**

**218-237-3333**

**info@affinityrealestate.com**



**Affinity Real Estate - 600 Park Avenue South - Park Rapids MN 56470**





website: [www.AffinityRealEstate.com](http://www.AffinityRealEstate.com) | email: [info@affinityrealestate.com](mailto:info@affinityrealestate.com) | office: 218-237-3333 | fax: 218-237-3377

**Affinity**  
REAL ESTATE INC

**\$259,900**  
MLS 6733713 Residential  
471 Tyrol Drive  
Brainerd MN 56401





website: [www.AffinityRealEstate.com](http://www.AffinityRealEstate.com) | email: [info@affinityrealestate.com](mailto:info@affinityrealestate.com) | office: 218-237-3333 | fax: 218-237-3377

**Affinity**  
REAL ESTATE INC

**\$259,900**  
MLS 6733713 Residential  
471 Tyrol Drive  
Brainerd MN 56401





website: [www.AffinityRealEstate.com](http://www.AffinityRealEstate.com) | email: [info@affinityrealestate.com](mailto:info@affinityrealestate.com) | office: 218-237-3333 | fax: 218-237-3377

**Affinity**  
REAL ESTATE INC

**\$259,900**  
MLS 6733713 Residential  
471 Tyrol Drive  
Brainerd MN 56401





website: [www.AffinityRealEstate.com](http://www.AffinityRealEstate.com) | email: [info@affinityrealestate.com](mailto:info@affinityrealestate.com) | office: 218-237-3333 | fax: 218-237-3377

**Affinity**  
REAL ESTATE INC

**\$259,900**  
MLS 6733713 Residential  
471 Tyrol Drive  
Brainerd MN 56401



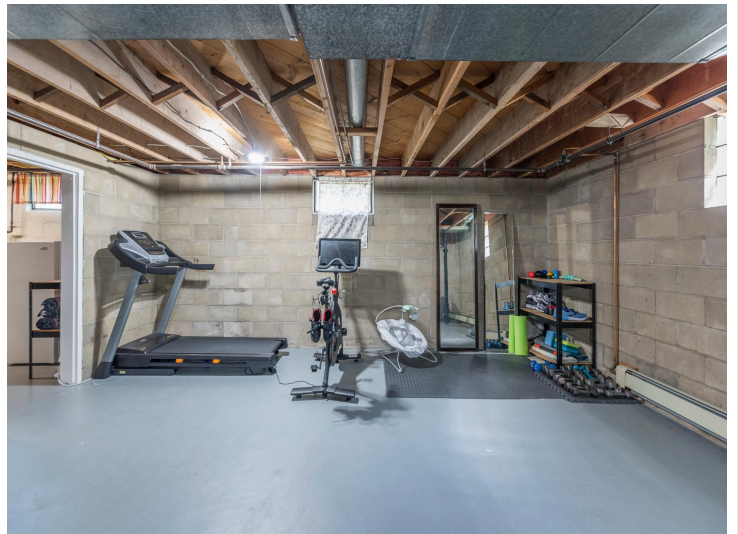
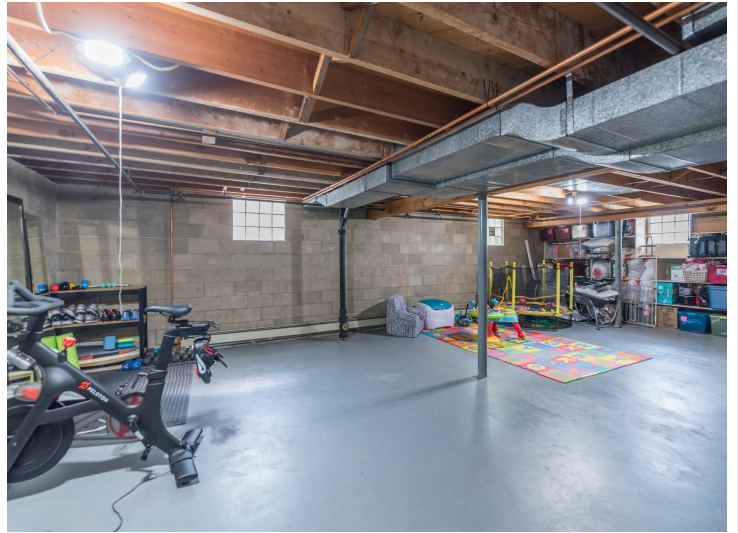


website: [www.AffinityRealEstate.com](http://www.AffinityRealEstate.com) | email: [info@affinityrealestate.com](mailto:info@affinityrealestate.com) | office: 218-237-3333 | fax: 218-237-3377

**Affinity**  
REAL ESTATE INC

**\$259,900**  
MLS 6733713 Residential  
471 Tyrol Drive  
Brainerd MN 56401





website: [www.AffinityRealEstate.com](http://www.AffinityRealEstate.com) | email: [info@affinityrealestate.com](mailto:info@affinityrealestate.com) | office: 218-237-3333 | fax: 218-237-3377

**Affinity**  
REAL ESTATE INC

**\$259,900**  
MLS 6733713 Residential  
471 Tyrol Drive  
Brainerd MN 56401





website: [www.AffinityRealEstate.com](http://www.AffinityRealEstate.com) | email: [info@affinityrealestate.com](mailto:info@affinityrealestate.com) | office: 218-237-3333 | fax: 218-237-3377



**\$259,900**  
MLS 6733713 Residential  
471 Tyrol Drive  
Brainerd MN 56401