



MLS 6733950 Lake Land

\$42,900

Description:

1.42 Acres with 342 feet of Private Shoreline on the East side of Pine Island Lake, West facing for those Terrific Sunsets!

A driveway has roughly been put in there, so you can pull off the road and park, the shoreline hasn't ever been touched, but the buyer can clear up to 50ft, bring in sand for a beach, remove trees, put in a dock, stairs or similar if needed/wanted. etc.

Lot is not buildable due to setbacks from lake and road.

Pine Island Lake is a private lake, approx 140 acres, has a private access. Good fishing. Can boat, jet ski, pontoon, etc.

An affordable way to enjoy the lake.

Additional Details:

Lot Acres	1.42
Lot Dimensions	325 x 129 x 342 x 216
School District	2170
Taxes	\$516
Taxes with Assessments	\$516
Tax Year	2024

Additional Features:

Driving Directions:

From County Road 26 to South on County Rd 17 to property on East Side of Pine Island Lake



Listed By:
Smart Choice Realty

Affinity Real Estate Inc. participates in the Regional Multiple Listing Service of Minnesota, Inc Broker Reciprocity (sm) program, allowing us to display other broker's listings on our website. All properties are subject to prior sale, change or withdrawal.



Call Affinity Real Estate

218-237-3333

info@affinityrealestate.com



Affinity Real Estate - 600 Park Avenue South - Park Rapids MN 56470

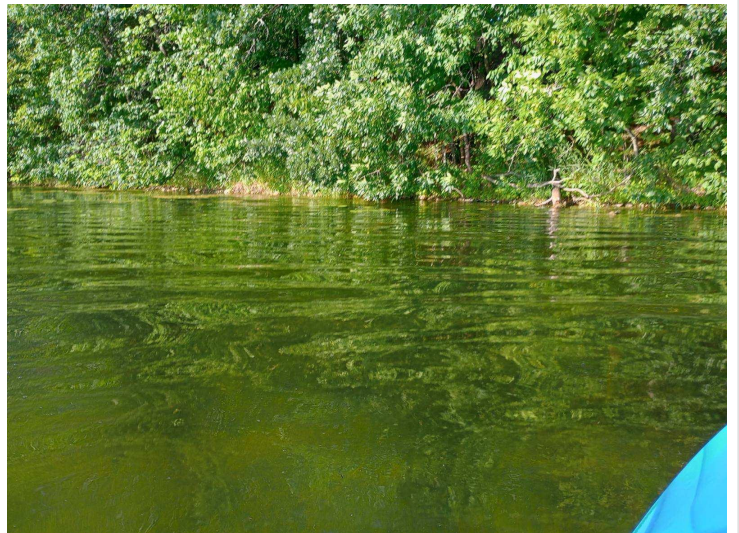
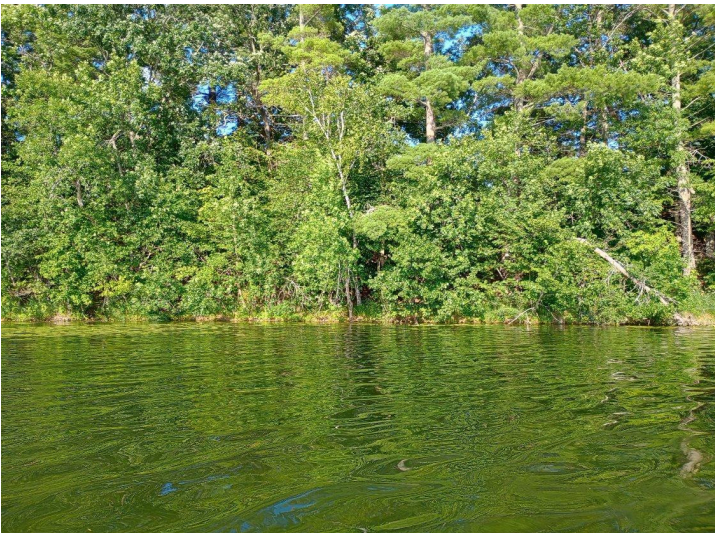


website: www.AffinityRealEstate.com | email: info@affinityrealestate.com | office: 218-237-3333 | fax: 218-237-3377



\$42,900

MLS 6733950 Lake Land
40039 County Rd 17
Browerville MN 56438



website: www.AffinityRealEstate.com | email: info@affinityrealestate.com | office: 218-237-3333 | fax: 218-237-3377



\$42,900
MLS 6733950 Lake Land
40039 County Rd 17
Browerville MN 56438



website: www.AffinityRealEstate.com | email: info@affinityrealestate.com | office: 218-237-3333 | fax: 218-237-3377



\$42,900
 MLS 6733950 Lake Land
 40039 County Rd 17
 Browerville MN 56438



website: www.AffinityRealEstate.com | email: info@affinityrealestate.com | office: 218-237-3333 | fax: 218-237-3377



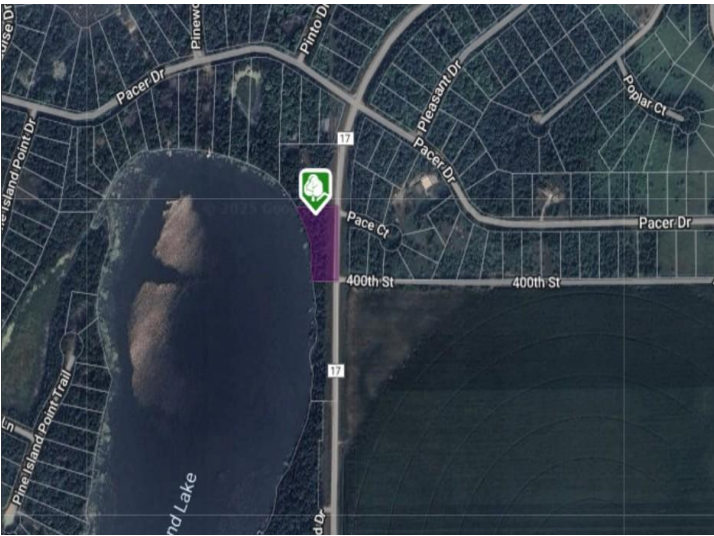
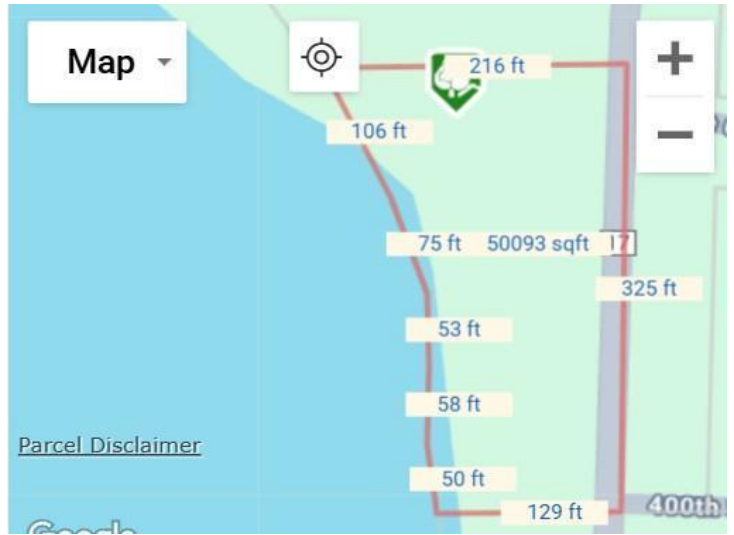
\$42,900
 MLS 6733950 Lake Land
 40039 County Rd 17
 Browerville MN 56438



website: www.AffinityRealEstate.com | email: info@affinityrealestate.com | office: 218-237-3333 | fax: 218-237-3377



\$42,900
MLS 6733950 Lake Land
40039 County Rd 17
Browerville MN 56438



As of: 4/19/2024

Parcel Number: 08-0030600

Payable Year: 2025 Rec# 1 of 1

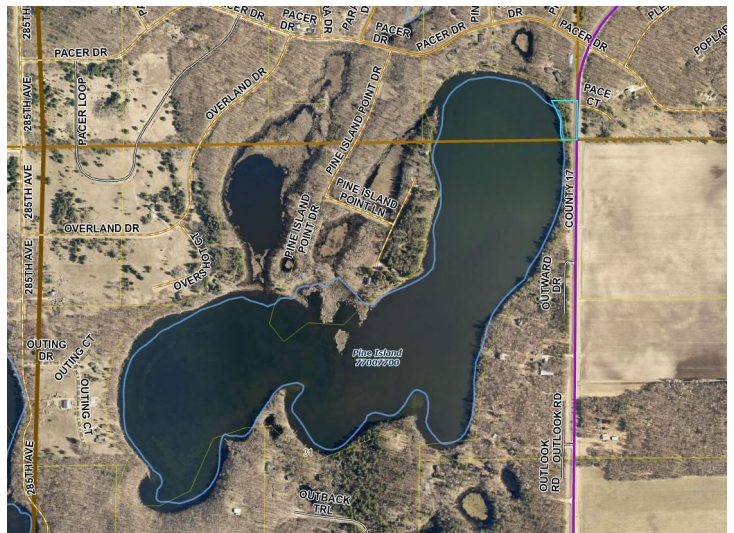
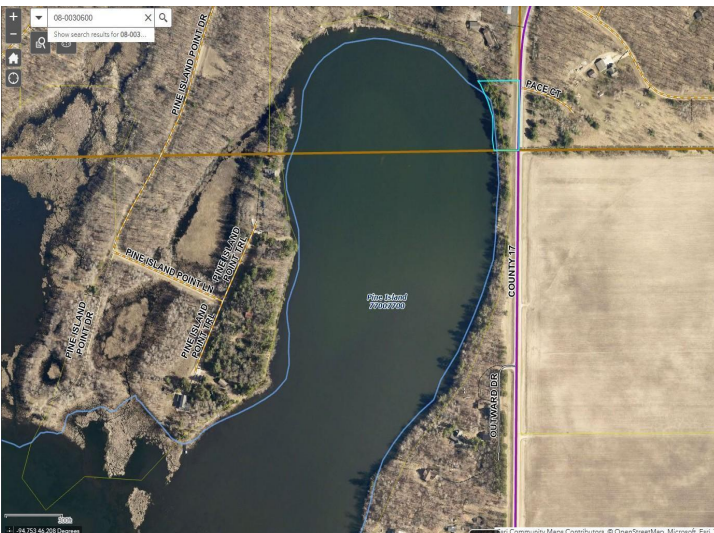
[General Information](#) | [Value Information](#) | [Special Asmts](#) | [Ditch](#) | [Sales](#) | [History](#) | [Appraisal Summary](#)

General				
PCL #	08-0030600/0	MIDSOTA CONSTRUCTION		
Class	151 SEASONAL REC RESIDENTIAL			
Homestead	0 NON HOMESTEAD	MP#	08-0119900	
HST Choice	99	Limits %		

Market/Taxable	Tax Capacity		Miscellaneous	
Land	52600 / 52600	Net TC	526	Deeded Acres 0.00
Build	0 / 0	Market Ref	0	Till Acres 0.00
Machine	0 / 0	Q.T.A.	0	
Exemptions		HS HG/1A	0	CER 0
Exclusion	0	NH HG/1A	0	
Total MKT	52600 / 52600			
GA Land	0 / 0			
Build Site	52600 / 52600			
House/Gar	0 / 0			
Other Build	0			
Till Land	0			
NC House	0			
NC Other	0			
New Improve	0			

This Data is Subject to Change.

[Another Search](#) | [Back to ParcelList](#)



website: www.AffinityRealEstate.com | email: info@affinityrealestate.com | office: 218-237-3333 | fax: 218-237-3377

Affinity
REAL ESTATE INC

\$42,900

MLS 6733950 Lake Land
40039 County Rd 17
Browerville MN 56438