

MLS 6734253 Residential

\$120,000

720 sq ft
2 bedrooms
1 baths

602 1st Street
Hawley MN 56549

Status: Coming Soon

Description:

Opportunity awaits!!! 2 bedroom 1 bath rambler coming soon. Great investment property or customize it to make it your own.

Additional Details:

Year Built	1953
Lot Acres	0.21
Lot Dimensions	9000
Garage Stalls	2
School District	150
Taxes	\$1,717
Taxes with Assessments	\$2,142
Tax Year	2025

Additional Features:

Basement: Crawl Space **Fuel:** Natural Gas **Garage:** 2 **Heat:** Boiler, Hot Water **Sewer:** City Sewer/Connected **Water:** City Water/Connected **Air Conditioning:** Window Unit(s)

Driving Directions:



Listed By:
Beyond Realty

Affinity Real Estate Inc. participates in the Regional Multiple Listing Service of Minnesota, Inc Broker Reciprocity (sm) program, allowing us to display other broker's listings on our website. All properties are subject to prior sale, change or withdrawal.



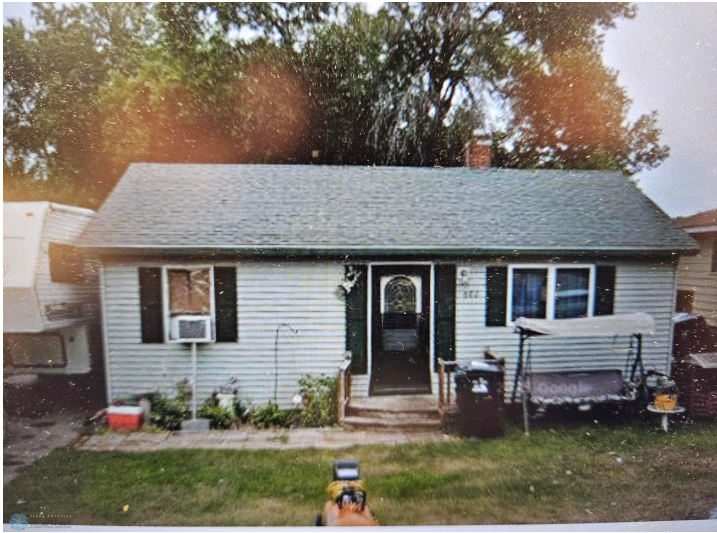
Call Affinity Real Estate

218-237-3333

info@affinityrealestate.com



Affinity Real Estate - 600 Park Avenue South - Park Rapids MN 56470



website: www.AffinityRealEstate.com | email: info@affinityrealestate.com | office: 218-237-3333 | fax:218-237-3377



\$120,000
MLS 6734253 Residential
602 1st Street
Hawley MN 56549