



MLS 6734368 Land

\$130,000

41.5 Acres
Raw Land

TBD County Road 136
Menahga MN 56464

Status: Pending

Description:

This property encompasses 41.5 acres of diverse land, showcasing a variety of natural features such as wooded land, open grasslands, and wetlands. The mixed coverage provides unique opportunities for recreation, wildlife observation, or building a home, making it a versatile and attractive piece of land.

Additional Details:

Lot Acres	41.5
Lot Dimensions	1623xirr
School District	821
Taxes	\$438
Taxes with Assessments	\$438
Tax Year	2025

Additional Features:

Driving Directions:

From 34/71 in Park Rapids, South on 71 to a right on 384th Ave. Follow to a right on Wadena Line Road (County Road 136) to property.



Listed By:
Wolff & Simon Real Estate

Affinity Real Estate Inc. participates in the Regional Multiple Listing Service of Minnesota, Inc Broker Reciprocity (sm) program, allowing us to display other broker's listings on our website. All properties are subject to prior sale, change or withdrawal.



Call Affinity Real Estate

218-237-3333

info@affinityrealestate.com



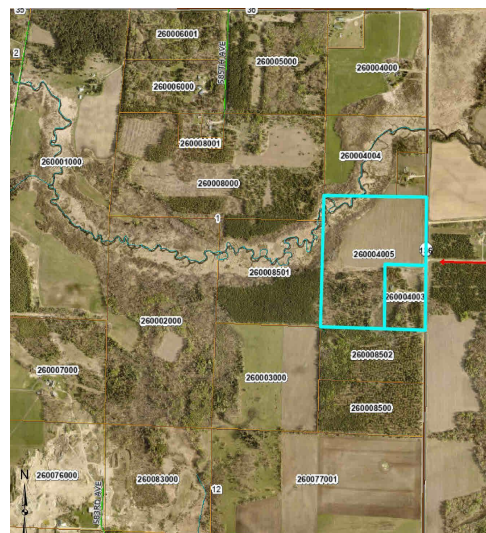
Affinity Real Estate - 600 Park Avenue South - Park Rapids MN 56470



website: www.AffinityRealEstate.com | email: info@affinityrealestate.com | office: 218-237-3333 | fax: 218-237-3377



\$130,000
MLS 6734368 Land
TBD County Road 136
Menahga MN 56464



website: www.AffinityRealEstate.com | email: info@affinityrealestate.com | office: 218-237-3333 | fax: 218-237-3377



\$130,000
 MLS 6734368 Land
 TBD County Road 136
 Menahga MN 56464