



MLS 6734580 Lake Home

\$1,845,000

3,048 sq ft
4 bedrooms
3 baths

19923 See Gull Road
Brainerd MN 56401

Waterfront: Love

Status: Active

Description:

GULL LAKE CHAIN! Distinctive & contemporary sophistication are tailored in this brand new 4BR-3BA custom built home on Love Lake. Located in the Heart of the Lakes Area and situated on 100ft of natural shoreline with level elevation and absolute STUNNING sunsets / flag stone walkway / HUGE wall of lakeside windows / gorgeous maple hardwood flooring / stylish modern lighting and décor / open concept-custom designed kitchen with center island-high end appliances-granite countertops-custom cabinetry-tile backsplash-wet bar / beautiful pine cathedral-beamed ceiling with custom lighting / gas fireplace / a sunroom with floor to ceiling windows...showcasing the beautiful lake views / main level primary bedroom with private ensuite-custom tiled shower & floors-deluxe soaking tub-smart mirror-walk in closet / elegant layered two-toned tray ceilings / welcoming foyer / main floor laundry / maintenance-free lakeside deck prepped and ready for automated drop down screens...truly a relaxing oasis / the upper level loft is overlooking the great room and offers INCREDIBLE views plus skylights and two additional bedrooms-a large Jack & Jill bathroom with custom barn doors / lower level is plumbed for in-floor heat-a future bath and waiting for your finishing touches that will add an additional 1000+/- sq. ft. of living space / on-demand water heater / heated-insulated garage with 8' designer garage door-potential bunkroom above / entire yard has recently been hydro-seeded...green grass has been digitally added to the photos. Prime location close to Championship golf, great restaurants and all local amenities the Brainerd Lakes Area has to offer!


Additional Details:

Year Built	2025
Lot Acres	0.61
Lot Dimensions	100 x 318 x 61 x 365
Garage Stalls	2
School District	181
Taxes	\$2,512
Taxes with Assessments	\$2,512
Tax Year	2025

Additional Features:

Fuel: Natural Gas **Heat:** Forced Air

Driving Directions:

 Listed By: THE DONDELINGER STOPLIGHT JCT. OF 371 & 180 NORTH ON 371 FOR 1.5 MILES TO, LEFT ON SEE GULL LAKE CHAIN. MILES TO SIGN & FIRE# 19925 ON LEFT.
Affinity Real Estate Inc. participates in the Regional Multiple Listing Service of Minnesota, Inc Broker Reciprocity (sm) program, allowing us to display other broker's listings on our website. All properties are subject to prior sale, change or withdrawal.



Call Affinity Real Estate

218-237-3333

info@affinityrealestate.com



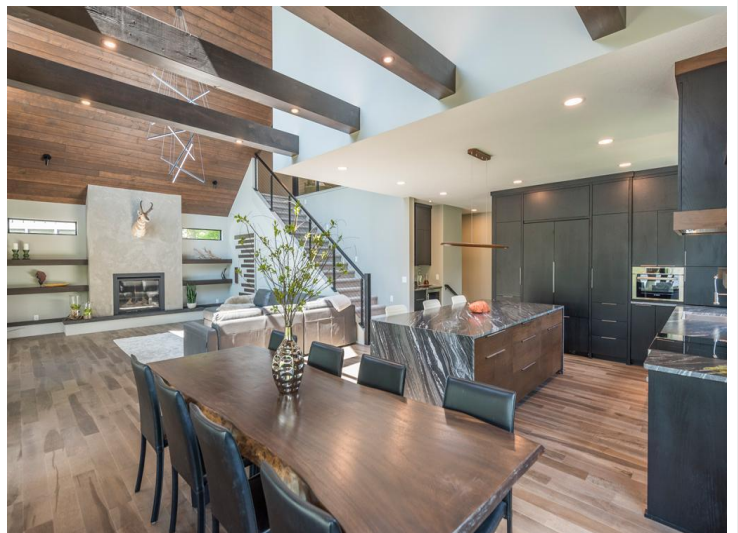
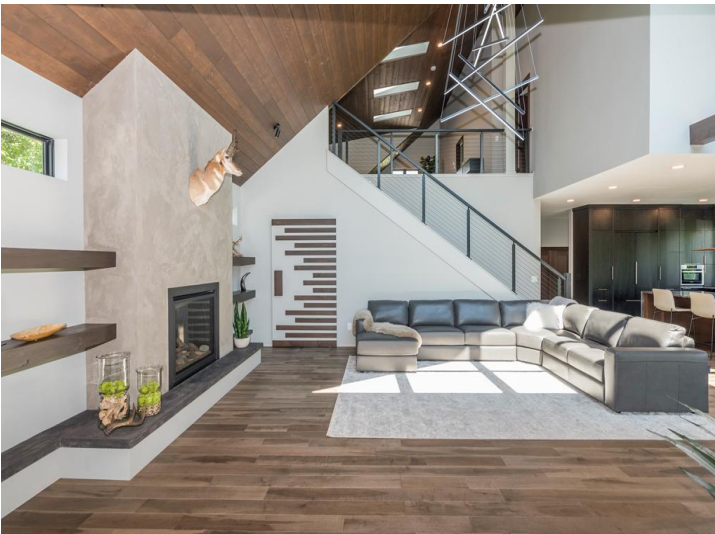
Affinity Real Estate - 600 Park Avenue South - Park Rapids MN 56470



website: www.AffinityRealEstate.com | email: info@affinityrealestate.com | office: 218-237-3333 | fax: 218-237-3377



\$1,845,000
 MLS 6734580 Lake Home
 19923 See Gull Road
 Brainerd MN 56401



website: www.AffinityRealEstate.com | email: info@affinityrealestate.com | office: 218-237-3333 | fax: 218-237-3377

Affinity
REAL ESTATE INC

\$1,845,000
MLS 6734580 Lake Home
19923 See Gull Road
Brainerd MN 56401



website: www.AffinityRealEstate.com | email: info@affinityrealestate.com | office: 218-237-3333 | fax: 218-237-3377

Affinity
REAL ESTATE INC

\$1,845,000
MLS 6734580 Lake Home
19923 See Gull Road
Brainerd MN 56401



website: www.AffinityRealEstate.com | email: info@affinityrealestate.com | office: 218-237-3333 | fax: 218-237-3377

Affinity
REAL ESTATE INC

\$1,845,000
MLS 6734580 Lake Home
19923 See Gull Road
Brainerd MN 56401



website: www.AffinityRealEstate.com | email: info@affinityrealestate.com | office: 218-237-3333 | fax: 218-237-3377



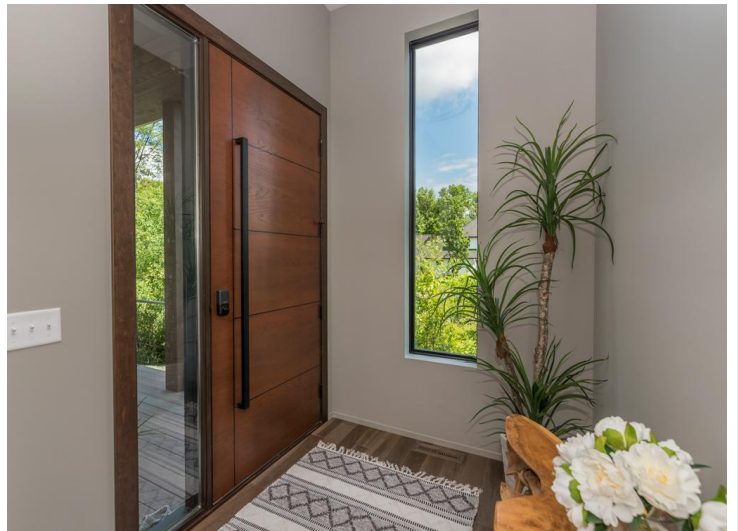
\$1,845,000
 MLS 6734580 Lake Home
 19923 See Gull Road
 Brainerd MN 56401



website: www.AffinityRealEstate.com | email: info@affinityrealestate.com | office: 218-237-3333 | fax: 218-237-3377



\$1,845,000
 MLS 6734580 Lake Home
 19923 See Gull Road
 Brainerd MN 56401



website: www.AffinityRealEstate.com | email: info@affinityrealestate.com | office: 218-237-3333 | fax: 218-237-3377



\$1,845,000
 MLS 6734580 Lake Home
 19923 See Gull Road
 Brainerd MN 56401



website: www.AffinityRealEstate.com | email: info@affinityrealestate.com | office: 218-237-3333 | fax: 218-237-3377

Affinity
REAL ESTATE INC

\$1,845,000

MLS 6734580 Lake Home
19923 See Gull Road
Brainerd MN 56401



website: www.AffinityRealEstate.com | email: info@affinityrealestate.com | office: 218-237-3333 | fax: 218-237-3377



\$1,845,000
 MLS 6734580 Lake Home
 19923 See Gull Road
 Brainerd MN 56401