



MLS 6734722 Residential

\$279,900

1,716 sq ft
3 bedrooms
2 baths

16173 Discovery Circle
Park Rapids MN 56470

Status: Pending

Description:

Park Rapids City Home - Beautiful three bedroom home that has many upgrades and is completely ready to move into. All on the main level, you will find three spacious bedrooms, full bath, 1/2 bath, laundry, large living room with gas fireplace along with southern facing family room with gas fireplace. The convenient attached double garage also gives you access to inside the home & backyard. Family room has access to large deck for you to enjoy the backyard barbeque, plus detached storage shed for your lawn needs. Coming Soon so don't miss out!

Additional Details:

Year Built	1978
Lot Acres	0.53
Lot Dimensions	100 x 230
Garage Stalls	2
School District	309
Taxes	\$2,817
Taxes with Assessments	\$3,038
Tax Year	2025

Additional Features:

Basement: Block, Sump Basket **Fuel:** Natural Gas **Garage:** 2 **Heat:** Forced Air, Fireplace(s) **Sewer:** Tank with Drainage Field **Water:** Well **Air Conditioning:** Central Air

Driving Directions:

Hwy 34 E to Henrietta Avenue, turn R and then take first left on Discovery Circle. Stay left at the Y and home will be the 6th home on the right.



Listed By:
Affinity Real Estate Inc.

Affinity Real Estate Inc. participates in the Regional Multiple Listing Service of Minnesota, Inc Broker Reciprocity (sm) program, allowing us to display other broker's listings on our website. All properties are subject to prior sale, change or withdrawal.



Call Affinity Real Estate

218-237-3333

info@affinityrealestate.com



Affinity Real Estate - 600 Park Avenue South - Park Rapids MN 56470



website: www.AffinityRealEstate.com | email: info@affinityrealestate.com | office: 218-237-3333 | fax: 218-237-3377



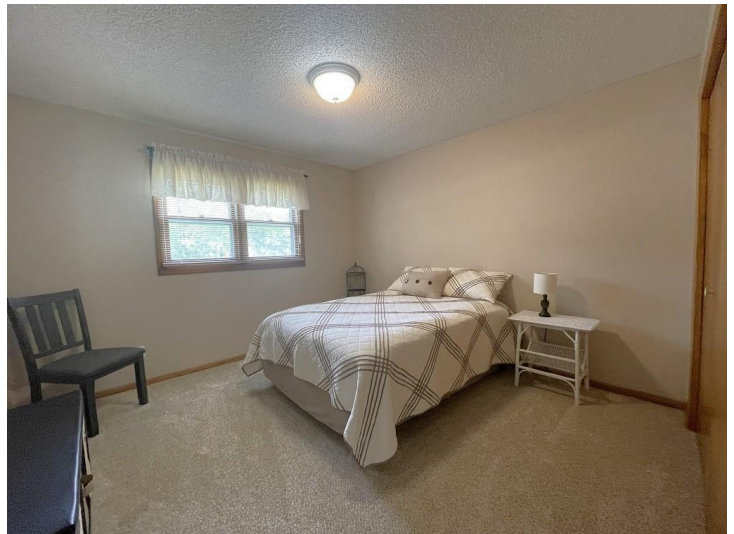
\$279,900
 MLS 6734722 Residential
 16173 Discovery Circle
 Park Rapids MN 56470



website: www.AffinityRealEstate.com | email: info@affinityrealestate.com | office: 218-237-3333 | fax: 218-237-3377

Affinity
REAL ESTATE INC

\$279,900
MLS 6734722 Residential
16173 Discovery Circle
Park Rapids MN 56470



website: www.AffinityRealEstate.com | email: info@affinityrealestate.com | office: 218-237-3333 | fax: 218-237-3377

Affinity
REAL ESTATE INC

\$279,900
MLS 6734722 Residential
16173 Discovery Circle
Park Rapids MN 56470



website: www.AffinityRealEstate.com | email: info@affinityrealestate.com | office: 218-237-3333 | fax: 218-237-3377



\$279,900
MLS 6734722 Residential
16173 Discovery Circle
Park Rapids MN 56470



website: www.AffinityRealEstate.com | email: info@affinityrealestate.com | office: 218-237-3333 | fax: 218-237-3377

Affinity
REAL ESTATE INC

\$279,900
MLS 6734722 Residential
16173 Discovery Circle
Park Rapids MN 56470