



MLS 6734810 Lake Home

\$799,000

2,758 sq ft
4 bedrooms
4 baths

12144 Sylvan Drive
Pillager MN 56473

Waterfront: Sylvan Lake
(11030400)

Status: Pending

Description:

Custom-Built 4 Bedroom, 4 Bath Home on Sylvan Lake! Experience premier lake living in this stunning custom-built home on Sylvan Lake, one of the most sought-after lakes in the Brainerd Lakes Area. Built in 2020, this modern lake home offers over 2,700 finished square feet of beautifully designed living space. Enjoy breathtaking lake views from the expansive lakeside deck or unwind in the cozy three-season porch. The home features a walk-out basement, gourmet kitchen with stainless steel appliances, quartz countertops, and a luxurious primary suite—all designed with comfort and functionality in mind.

With main floor living, 4 spacious bedrooms, and 4 modern bathrooms, this property blends elegance with everyday convenience. Whether you're into fishing, boating, sailing, or simply soaking in the serenity of one of Minnesota's clearest lakes, this home offers the ultimate in lakefront living.

Don't miss your opportunity to own a piece of paradise on Sylvan Lake!

Additional Details:

Year Built	2020
Lot Acres	0.02
Lot Dimensions	50x154x50x162
School District	116
Taxes	\$3,320
Taxes with Assessments	\$3,386
Tax Year	2025

Additional Features:

Basement: Finished, Walkout **Fuel:** Propane **Heat:** Forced Air **Sewer:** Tank with Drainage Field **Water:** Drilled, Well **Air Conditioning:** Central Air

Driving Directions:

Highway 210 to West Sylvan Drive



Listed By:
LPT Realty, LLC

Affinity Real Estate Inc. participates in the Regional Multiple Listing Service of Minnesota, Inc Broker Reciprocity (sm) program, allowing us to display other broker's listings on our website. All properties are subject to prior sale, change or withdrawal.



Call Affinity Real Estate

218-237-3333

info@affinityrealestate.com



Affinity Real Estate - 600 Park Avenue South - Park Rapids MN 56470



website: www.AffinityRealEstate.com | email: info@affinityrealestate.com | office: 218-237-3333 | fax: 218-237-3377

Affinity
REAL ESTATE INC

\$799,000
MLS 6734810 Lake Home
12144 Sylvan Drive
Pillager MN 56473



website: www.AffinityRealEstate.com | email: info@affinityrealestate.com | office: 218-237-3333 | fax: 218-237-3377

Affinity
REAL ESTATE INC

\$799,000
MLS 6734810 Lake Home
12144 Sylvan Drive
Pillager MN 56473



website: www.AffinityRealEstate.com | email: info@affinityrealestate.com | office: 218-237-3333 | fax: 218-237-3377

Affinity
REAL ESTATE INC

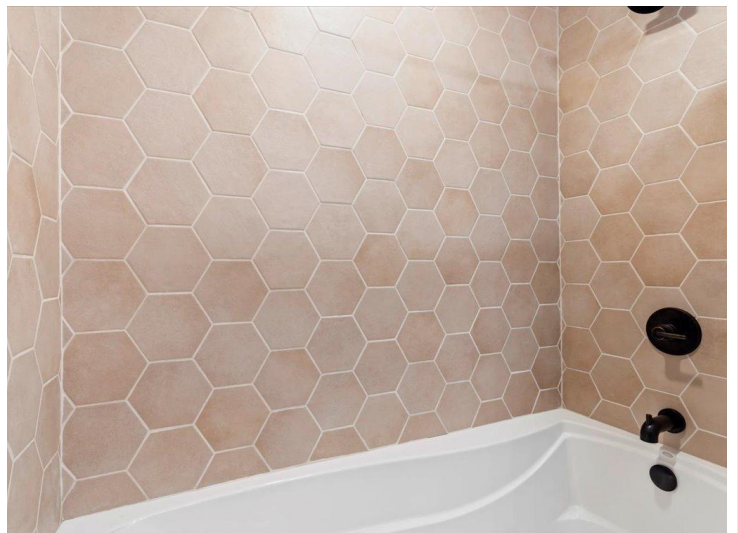
\$799,000
MLS 6734810 Lake Home
12144 Sylvan Drive
Pillager MN 56473



website: www.AffinityRealEstate.com | email: info@affinityrealestate.com | office: 218-237-3333 | fax: 218-237-3377

Affinity
REAL ESTATE INC

\$799,000
MLS 6734810 Lake Home
12144 Sylvan Drive
Pillager MN 56473



website: www.AffinityRealEstate.com | email: info@affinityrealestate.com | office: 218-237-3333 | fax: 218-237-3377

Affinity
REAL ESTATE INC

\$799,000
MLS 6734810 Lake Home
12144 Sylvan Drive
Pillager MN 56473



website: www.AffinityRealEstate.com | email: info@affinityrealestate.com | office: 218-237-3333 | fax: 218-237-3377

Affinity
REAL ESTATE INC

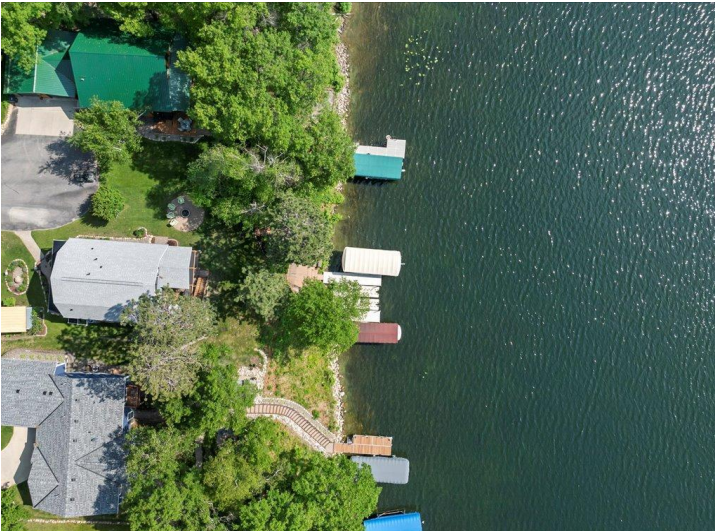
\$799,000
MLS 6734810 Lake Home
12144 Sylvan Drive
Pillager MN 56473



website: www.AffinityRealEstate.com | email: info@affinityrealestate.com | office: 218-237-3333 | fax: 218-237-3377

Affinity
REAL ESTATE INC

\$799,000
MLS 6734810 Lake Home
12144 Sylvan Drive
Pillager MN 56473



website: www.AffinityRealEstate.com | email: info@affinityrealestate.com | office: 218-237-3333 | fax: 218-237-3377

Affinity
REAL ESTATE INC

\$799,000
MLS 6734810 Lake Home
12144 Sylvan Drive
Pillager MN 56473



website: www.AffinityRealEstate.com | email: info@affinityrealestate.com | office: 218-237-3333 | fax: 218-237-3377



\$799,000
MLS 6734810 Lake Home
12144 Sylvan Drive
Pillager MN 56473