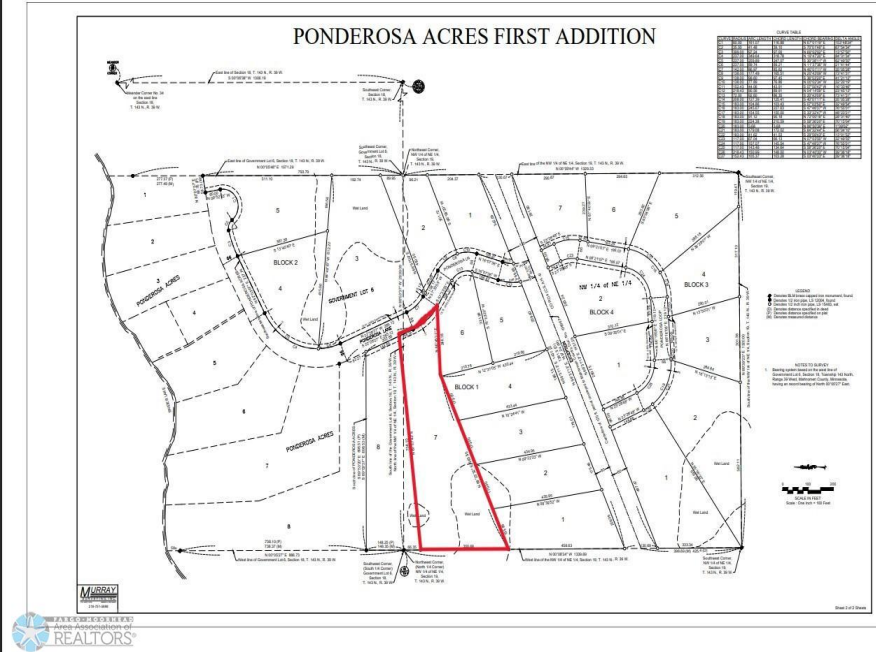




MLS 6734842 Lake Land

**\$68,900**



**Description:**

3.05 acre backlot near Snider Lake to build your dream home, shouse and/or shop!! Great fishing and other water sports. Excellent area for hunting. Open to the builder of your choice. An additional 12 more lots available as well!! Enjoy the riding trails nearby, dining, golf and Casino in Mahanomen and just 1/2 hour to the beautiful City of Detroit Lakes. Corner pins have been marked. Electricity to all lots. Located just off of CR-4 and close to public boat access. Covenants, Restrictions and Easements of record and attached.

**Additional Details:**

Lot Acres	3.05
Lot Dimensions	58.20x912.03x350.68x758.10
School District	435
Taxes	\$1
Taxes with Assessments	\$1
Tax Year	2024

**Additional Features:**

**Driving Directions:**

Follow directions on Hwy 59 to Waubun. Turn onto MN-113 traveling East for approximately 21 miles; turn left onto CR-4 for approximately 1.7 miles. Lots will be marked to the left of CR-4 and onto Ponderosa Ln.



Listed By:  
REALTY XPERTS

Affinity Real Estate Inc. participates in the Regional Multiple Listing Service of Minnesota, Inc Broker Reciprocity (sm) program, allowing us to display other broker's listings on our website. All properties are subject to prior sale, change or withdrawal.



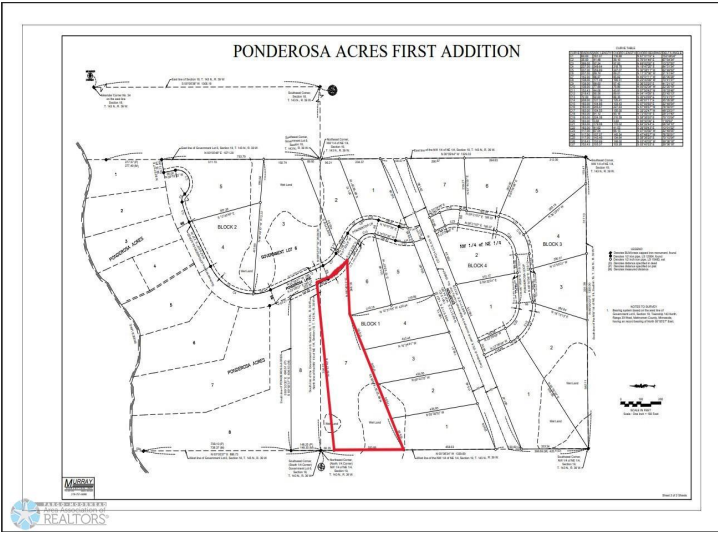
Call Affinity Real Estate

**218-237-3333**

[info@affinityrealestate.com](mailto:info@affinityrealestate.com)



Affinity Real Estate - 600 Park Avenue South - Park Rapids MN 56470



website: [www.AffinityRealEstate.com](http://www.AffinityRealEstate.com) | email: [info@affinityrealestate.com](mailto:info@affinityrealestate.com) | office: 218-237-3333 | fax:218-237-3377



**\$68,900**  
MLS 6734842 Lake Land  
(Lot 7) TBD Ponderosa Lane  
Waubun MN 56589

website: [www.AffinityRealEstate.com](http://www.AffinityRealEstate.com) | email: [info@affinityrealestate.com](mailto:info@affinityrealestate.com) | office: 218-237-3333 | fax:218-237-3377



**\$68,900**

MLS 6734842 Lake Land  
(Lot 7) TBD Ponderosa Lane  
Waubun MN 56589