



MLS 6734954 Residential

\$500,000

1,617 sq ft
3 bedrooms
2 baths

TBD Riverside Drive
Brainerd MN 56401

Status: Active



EXTERIOR ELEVATION FRONT

Description:

This is your opportunity to own a beautifully crafted, brand-new home by Granite Ridge Construction, set on a stunning 5-acre, heavily wooded lot just outside the city limits of Brainerd. Enjoy the perfect balance of peaceful seclusion and modern luxury surrounded by towering trees, abundant wildlife, and ultimate privacy. This thoughtfully designed 1,617 sq ft home will feature 3 spacious bedrooms and 2 full bathrooms, including a private primary suite with its own bathroom and walk-in closet—your personal escape at the end of the day. Inside, you'll find luxury vinyl plank flooring throughout the main living areas, plush carpeting in the bedrooms, and stylish finishes throughout. The open-concept kitchen will showcase elegant quartz countertops and custom cabinetry—ideal for entertaining or simply enjoying the tranquility of your surroundings. Built with durability in mind, the home will feature low-maintenance steel siding, blending long-lasting quality with timeless curb appeal. With plenty of space to roam, relax, and reconnect with nature, this property offers a rare chance to enjoy new construction in a peaceful wooded setting—just minutes from the amenities, shops, and lakes of Brainerd.

Additional Details:

Year Built	2025
Lot Acres	5.12
Lot Dimensions	397x779x517x441
Garage Stalls	2
School District	181
Taxes	\$888
Taxes with Assessments	\$888
Tax Year	2025

Additional Features:

Basement: None **Fuel:** Propane **Garage:** 2 **Heat:** Forced Air **Sewer:** City Sewer/Connected **Water:** City Water/Connected **Air Conditioning:** Central Air

Driving Directions:

From 371N to L on 4th St NW to R on Riverside Dr to property on L



Listed By:
Central MN Realty LLC

Affinity Real Estate Inc. participates in the Regional Multiple Listing Service of Minnesota, Inc Broker Reciprocity (sm) program, allowing us to display other broker's listings on our website. All properties are subject to prior sale, change or withdrawal.



Call Affinity Real Estate

218-237-3333

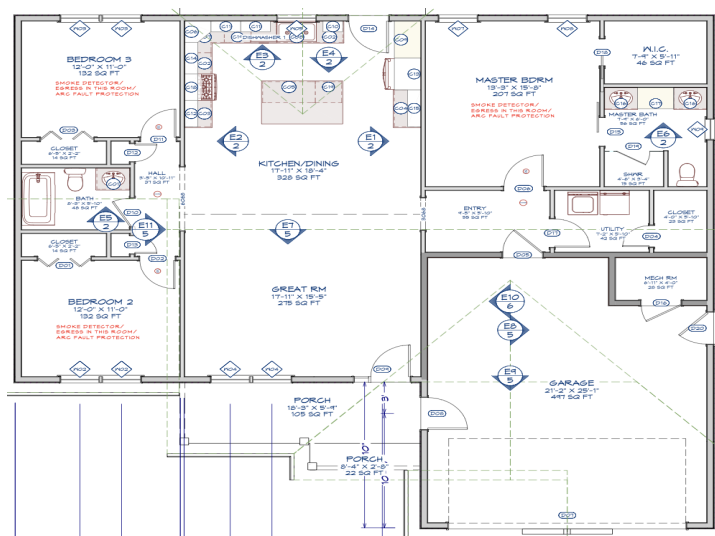
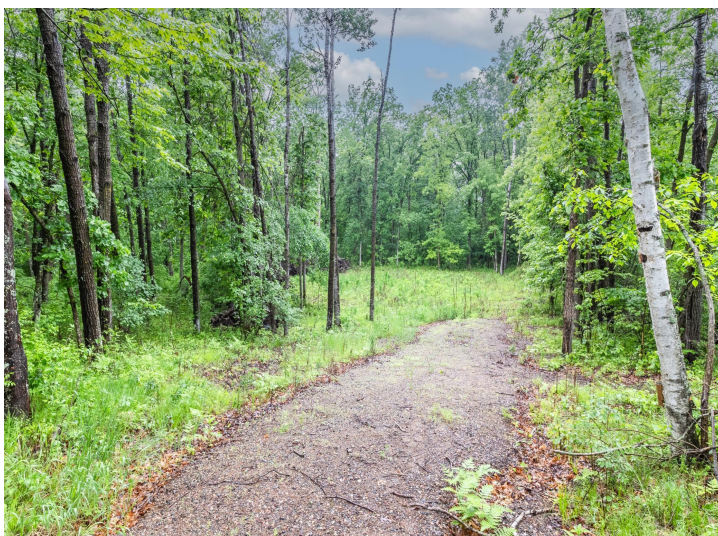
info@affinityrealestate.com



Affinity Real Estate - 600 Park Avenue South - Park Rapids MN 56470



EXTERIOR ELEVATION FRONT



CAMERA 6

website: www.AffinityRealEstate.com | email: info@affinityrealestate.com | office: 218-237-3333 | fax: 218-237-3377

Affinity
REAL ESTATE INC

\$500,000
MLS 6734954 Residential
TBD Riverside Drive
Brainerd MN 56401