



MLS 6735006 Residential

\$375,000

1,584 sq ft
2 bedrooms
2 baths

9308 Viking Street
Brainerd MN 56401

Status: Pending

Description:

Welcome to 9308 Viking Street, where comfort meets elegance in the "Cottage" model by Thomas Allen Homes. Built in 2018, this exquisite single-level home offers 2 bedrooms, 2 bathrooms, and a 2-stall garage. 1 Located in the highly sought-after Spruce Reserve, a maintenance-free community, you can truly sit back and relax as all lawn care and snow removal are handled for you. Enjoy step-free living with everything you need conveniently on the main level

Additional Details:

Year Built	2018
Lot Acres	0.39
Lot Dimensions	88x201x87x185
Garage Stalls	2
School District	181
Taxes	\$3,418
Taxes with Assessments	\$3,418
Tax Year	2024

Additional Features:

Basement: Block, Crawl Space, Storage Space **Fuel:** Natural Gas **Garage:** 2 **Heat:** Forced Air **Sewer:** City Sewer/Connected **Water:** City Water/Connected **Air Conditioning:** Central Air

Driving Directions:

FROM Brainerd, North past Ice Arena on Riverside to left on Beaver Dam Rd to Right on Northtown St. Right on Viking.



Listed By:
Edina Realty, Inc.

Affinity Real Estate Inc. participates in the Regional Multiple Listing Service of Minnesota, Inc Broker Reciprocity (sm) program, allowing us to display other broker's listings on our website. All properties are subject to prior sale, change or withdrawal.



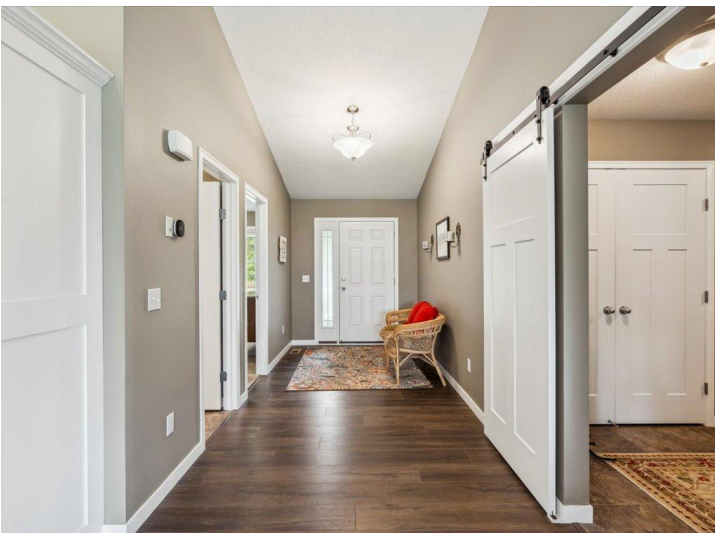
Call Affinity Real Estate

218-237-3333

info@affinityrealestate.com



Affinity Real Estate - 600 Park Avenue South - Park Rapids MN 56470



website: www.AffinityRealEstate.com | email: info@affinityrealestate.com | office: 218-237-3333 | fax: 218-237-3377



\$375,000
 MLS 6735006 Residential
 9308 Viking Street
 Brainerd MN 56401



website: www.AffinityRealEstate.com | email: info@affinityrealestate.com | office: 218-237-3333 | fax: 218-237-3377



\$375,000
 MLS 6735006 Residential
 9308 Viking Street
 Brainerd MN 56401



website: www.AffinityRealEstate.com | email: info@affinityrealestate.com | office: 218-237-3333 | fax: 218-237-3377

Affinity
REAL ESTATE INC

\$375,000
MLS 6735006 Residential
9308 Viking Street
Brainerd MN 56401



website: www.AffinityRealEstate.com | email: info@affinityrealestate.com | office: 218-237-3333 | fax: 218-237-3377



\$375,000
MLS 6735006 Residential
9308 Viking Street
Brainerd MN 56401



website: www.AffinityRealEstate.com | email: info@affinityrealestate.com | office: 218-237-3333 | fax: 218-237-3377

Affinity
REAL ESTATE INC

\$375,000
MLS 6735006 Residential
9308 Viking Street
Brainerd MN 56401



website: www.AffinityRealEstate.com | email: info@affinityrealestate.com | office: 218-237-3333 | fax:218-237-3377



\$375,000
MLS 6735006 Residential
9308 Viking Street
Brainerd MN 56401