



MLS 6735094 Land

**\$75,000**

1.06 Acres  
Subdivided

Lot 8 & 9 Essex Road  
Park Rapids MN 56470

Status: Pending

#### Description:

Discover the perfect canvas for your dream home on this beautiful wooded lot close to town, the Heartland Trail & Headwaters Golf Course! Serene & spacious property offers a unique opportunity to bring your own builder!

#### Additional Details:

Lot Acres	1.06
Lot Dimensions	342x260
School District	309
Taxes	\$136
Taxes with Assessments	\$136
Tax Year	2025

#### Additional Features:

#### Driving Directions:

From Hwys. 71/34 in Park Rapids. East on Hwy 34 to County 1 (Central Ave.). North to Essex Rd. Right on Essex to our signs on the right.



Listed By:  
Coldwell Banker Crown Realtors

Affinity Real Estate Inc. participates in the Regional Multiple Listing Service of Minnesota, Inc Broker Reciprocity (sm) program, allowing us to display other broker's listings on our website. All properties are subject to prior sale, change or withdrawal.



Call Affinity Real Estate

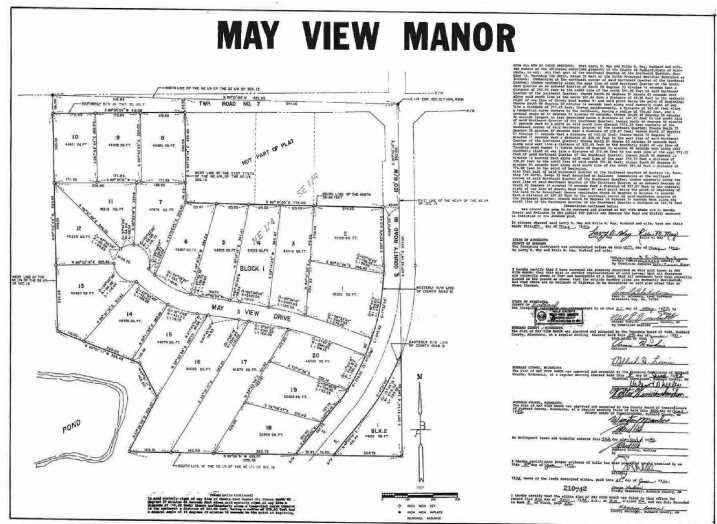
**218-237-3333**

[info@affinityrealestate.com](mailto:info@affinityrealestate.com)



Affinity Real Estate - 600 Park Avenue South - Park Rapids MN 56470





website: [www.AffinityRealEstate.com](http://www.AffinityRealEstate.com) | email: [info@affinityrealestate.com](mailto:info@affinityrealestate.com) | office: 218-237-3333 | fax: 218-237-3377



**\$75,000**  
MLS 6735094 Land  
Lot 8 & 9 Essex Road  
Park Rapids MN 56470





website: [www.AffinityRealEstate.com](http://www.AffinityRealEstate.com) | email: [info@affinityrealestate.com](mailto:info@affinityrealestate.com) | office: 218-237-3333 | fax: 218-237-3377



**\$75,000**  
MLS 6735094 Land  
Lot 8 & 9 Essex Road  
Park Rapids MN 56470