



MLS 6735439 Residential

\$582,900

1,883 sq ft
3 bedrooms
2 baths

14502 Lynndale Drive
Baxter MN 56425

Status: Active

Description:

THIS NEW HOME HAS IT ALL! ALL LIVING SPACE ON ONE LEVEL. NO STAIRS! Home construction will be completed July 15, 2025. Absolutely Beautiful !!

Features: heated floors, vaulted ceilings, real wood finishes, a kitchen to die for. Almost 1900 sq ft finished and sitting on a very private .4 acres. Yet it is still close to all the shopping and medical clinics Baxter has to offer. See Supplements for main floor layout. WE BUILD BEAUTIFUL HOMES!

..... EXTRA FEATURES. Hallways, doors and shower made extra wide to accommodate use of canes, walkers and wheelchairs. Mini-splits allow for temperature control in each room. Beautiful wood in-lay to trey vault in Master Bedroom. Display Nook near main Entry.

For a home with similar features on a larger lot with lots of pines see Builder's Model Home at 11775 Forestview Dr, Baxter.

Additional Details:

Year Built	2025
Lot Acres	0.4
Lot Dimensions	120x157x120x151
Garage Stalls	3
School District	181
Taxes	\$200
Taxes with Assessments	\$200
Tax Year	2025

Additional Features:

Basement: None **Fuel:** Natural Gas **Garage:** 3 **Heat:** Radiant Floor **Sewer:** City Sewer/Connected **Water:** City Water/Connected **Air Conditioning:** Ductless Mini-Split

Driving Directions:

FROM HWY 371 GO WEST ON CLEARWATER AVE TO LYNNDAL DR. THE LEFT (SOUTH) ON LYNNDAL 1/2 BLOCK.. NEW HOME ON EAST SIDE OF LYNNDAL.



Listed By:
Gregory F Wersal, Broker

Affinity Real Estate Inc. participates in the Regional Multiple Listing Service of Minnesota, Inc Broker Reciprocity (sm) program, allowing us to display other broker's listings on our website. All properties are subject to prior sale, change or withdrawal.



Call Affinity Real Estate

218-237-3333

info@affinityrealestate.com



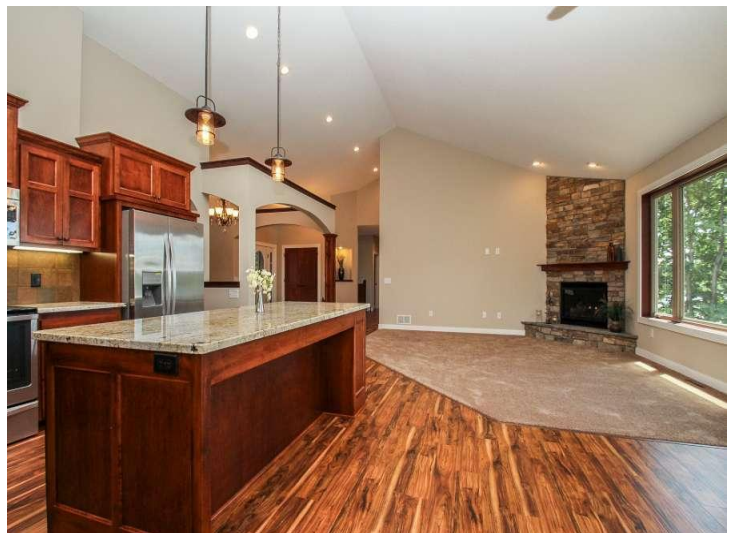
Affinity Real Estate - 600 Park Avenue South - Park Rapids MN 56470



website: www.AffinityRealEstate.com | email: info@affinityrealestate.com | office: 218-237-3333 | fax: 218-237-3377



\$582,900
 MLS 6735439 Residential
 14502 Lynndale Drive
 Baxter MN 56425



website: www.AffinityRealEstate.com | email: info@affinityrealestate.com | office: 218-237-3333 | fax: 218-237-3377



\$582,900
 MLS 6735439 Residential
 14502 Lynndale Drive
 Baxter MN 56425



website: www.AffinityRealEstate.com | email: info@affinityrealestate.com | office: 218-237-3333 | fax: 218-237-3377



\$582,900
MLS 6735439 Residential
14502 Lynndale Drive
Baxter MN 56425

website: www.AffinityRealEstate.com | email: info@affinityrealestate.com | office: 218-237-3333 | fax:218-237-3377



\$582,900

MLS 6735439 Residential
14502 Lynndale Drive
Baxter MN 56425