



MLS 6735455 Residential

\$190,000

1,160 sq ft
0 bedrooms
1 baths

8704 Tobique Road
Remer MN 56672

Status: Active

Description:

Enjoy all the northwoods has to offer! This property has three wonderful gathering spaces, 2 with living quarters, a separate sauna house, storage shed, and a small machine shed for your side-by-side, mower, or boat. All of this sits on 3.98 acres abutting hundreds of acres of Chippewa National Forest. The main cabin along with the bonus room has a 12' x 44' deck and an outdoor kitchen area, with enough patio seating for everyone. The bunkhouse has two bedrooms for extra company. The property also includes four 30 amp electric RV hookups. Conveniently located just 8 miles north of Remer in an area known for excellent hunting of deer, bear, & grouse and only a 1/2 mile from the Soo Line Trail for 4-wheeling and snowmobiling. Bring the boat because you're close to many lakes for great fishing including Leech Lake. The main cabin comes mostly furnished, minus the mounts and a few personal items. This property could be a great family getaway or the perfect hunting camp for your crew!

Additional Details:

Year Built	1961
Lot Acres	3.98
Lot Dimensions	Irregular
School District	118
Taxes	\$560
Taxes with Assessments	\$626
Tax Year	2025

Additional Features:

Basement: None **Fuel:** Electric, Propane **Heat:** Baseboard, Fireplace(s) **Sewer:** Mound Septic, Private Sewer **Water:** Drilled, Well **Air Conditioning:** None

Driving Directions:

From Remer, north on County Rd 4 for 8 miles to left on County 53 (Tobique Rd) for 1 mile to property on the left



Listed By:
Thunder Lake Realty

Affinity Real Estate Inc. participates in the Regional Multiple Listing Service of Minnesota, Inc Broker Reciprocity (sm) program, allowing us to display other broker's listings on our website. All properties are subject to prior sale, change or withdrawal.



Call Affinity Real Estate

218-237-3333

info@affinityrealestate.com



Affinity Real Estate - 600 Park Avenue South - Park Rapids MN 56470



website: www.AffinityRealEstate.com | email: info@affinityrealestate.com | office: 218-237-3333 | fax: 218-237-3377

Affinity
REAL ESTATE INC

\$190,000
MLS 6735455 Residential
8704 Tobique Road
Remer MN 56672



website: www.AffinityRealEstate.com | email: info@affinityrealestate.com | office: 218-237-3333 | fax: 218-237-3377

Affinity
REAL ESTATE INC

\$190,000
MLS 6735455 Residential
8704 Tobique Road
Remer MN 56672



website: www.AffinityRealEstate.com | email: info@affinityrealestate.com | office: 218-237-3333 | fax: 218-237-3377



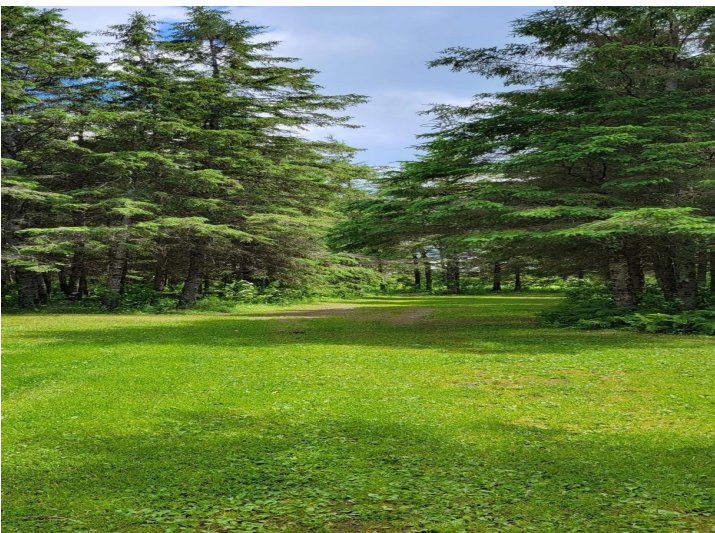
\$190,000
MLS 6735455 Residential
8704 Tobique Road
Remer MN 56672



website: www.AffinityRealEstate.com | email: info@affinityrealestate.com | office: 218-237-3333 | fax: 218-237-3377

Affinity
REAL ESTATE INC

\$190,000
MLS 6735455 Residential
8704 Tobique Road
Remer MN 56672



website: www.AffinityRealEstate.com | email: info@affinityrealestate.com | office: 218-237-3333 | fax: 218-237-3377

Affinity
REAL ESTATE INC

\$190,000
MLS 6735455 Residential
8704 Tobique Road
Remer MN 56672