



MLS 6736038 Residential

\$264,900

2,622 sq ft
5 bedrooms
2 baths

19067 US 71
Park Rapids MN 56470

Status: Pending

Description:

Convenient to town but country feel, this beautifully updated 5 BD 1 ½ BA home on half an acre has a lot to offer! Numerous south-facing windows bathe the spacious foyer and family room in natural light. Country kitchen serves as the hub of the home with both informal and formal dining areas flowing to one side and the living room, laundry, and family room off the other. The current owners meticulously updated the home with the following: new flooring throughout, new master bedroom with egress window in the basement, updating of the electrical panels and adding of new circuits, air exchange system, natural gas water heater, water softener, reverse osmosis system in kitchen sink faucet, and all new stainless steel appliances. The 1000+ SF heated detached garage received a new roof in 2022 and includes a large workshop with plenty of built-ins and storage. New gas furnace in 2019 and new septic system in 2020. Private, park-like yard with flowering fruit trees.

Additional Details:

Year Built	1955
Lot Acres	0.54
Lot Dimensions	100x167x259
Garage Stalls	2
School District	309
Taxes	\$1,514
Taxes with Assessments	\$1,444
Tax Year	2025

Additional Features:

Basement: Block, Egress Window(s), Partial, Partially Finished **Fuel:** Natural Gas **Garage:** 2 **Heat:** Forced Air **Sewer:** Private Sewer, Tank with Drainage Field **Water:** Private, Sand Point, Well **Air Conditioning:** Central Air

Driving Directions:

One mile north on US 71 from MN Hwy 34 in Park Rapids.



Listed By:
Crystal Lakes Real Estate

Affinity Real Estate Inc. participates in the Regional Multiple Listing Service of Minnesota, Inc Broker Reciprocity (sm) program, allowing us to display other broker's listings on our website. All properties are subject to prior sale, change or withdrawal.



Call Affinity Real Estate

218-237-3333

info@affinityrealestate.com



Affinity Real Estate - 600 Park Avenue South - Park Rapids MN 56470



website: www.AffinityRealEstate.com | email: info@affinityrealestate.com | office: 218-237-3333 | fax: 218-237-3377



\$264,900
 MLS 6736038 Residential
 19067 US 71
 Park Rapids MN 56470



website: www.AffinityRealEstate.com | email: info@affinityrealestate.com | office: 218-237-3333 | fax: 218-237-3377

Affinity
REAL ESTATE INC

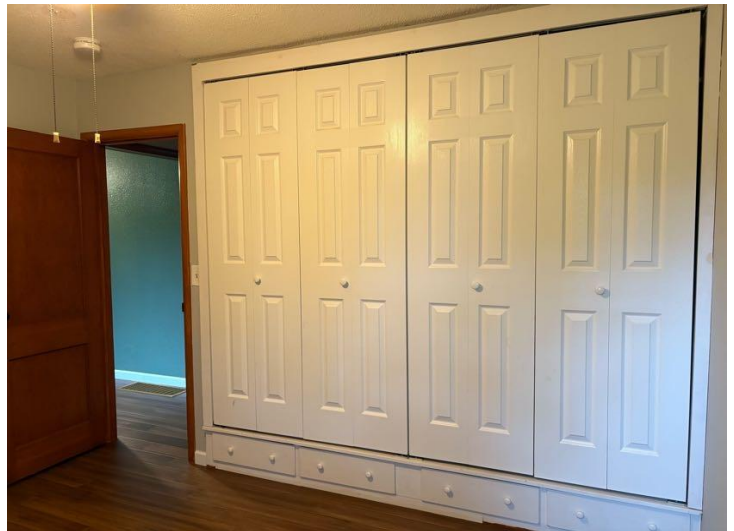
\$264,900
MLS 6736038 Residential
19067 US 71
Park Rapids MN 56470



website: www.AffinityRealEstate.com | email: info@affinityrealestate.com | office: 218-237-3333 | fax: 218-237-3377



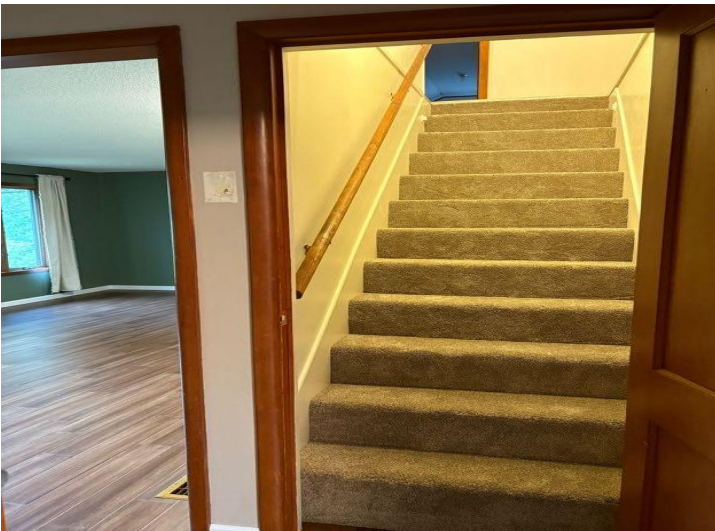
\$264,900
 MLS 6736038 Residential
 19067 US 71
 Park Rapids MN 56470



website: www.AffinityRealEstate.com | email: info@affinityrealestate.com | office: 218-237-3333 | fax: 218-237-3377



\$264,900
 MLS 6736038 Residential
 19067 US 71
 Park Rapids MN 56470



website: www.AffinityRealEstate.com | email: info@affinityrealestate.com | office: 218-237-3333 | fax: 218-237-3377

Affinity
REAL ESTATE INC

\$264,900
MLS 6736038 Residential
19067 US 71
Park Rapids MN 56470



website: www.AffinityRealEstate.com | email: info@affinityrealestate.com | office: 218-237-3333 | fax: 218-237-3377



\$264,900
 MLS 6736038 Residential
 19067 US 71
 Park Rapids MN 56470



website: www.AffinityRealEstate.com | email: info@affinityrealestate.com | office: 218-237-3333 | fax: 218-237-3377



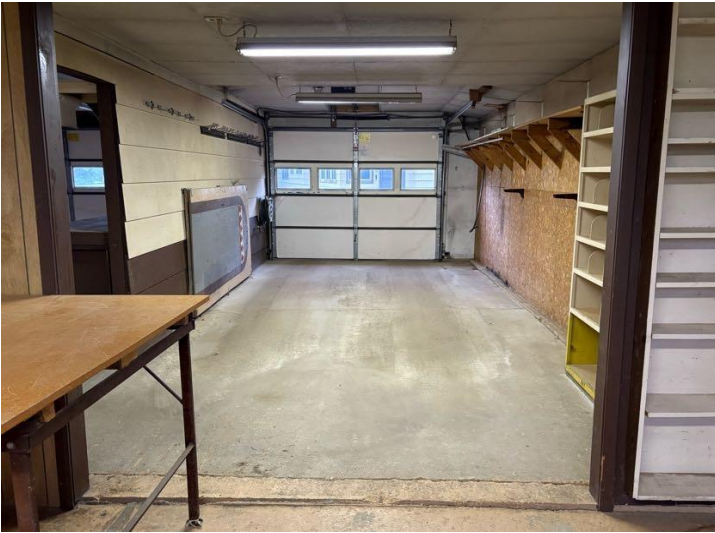
\$264,900
 MLS 6736038 Residential
 19067 US 71
 Park Rapids MN 56470



website: www.AffinityRealEstate.com | email: info@affinityrealestate.com | office: 218-237-3333 | fax: 218-237-3377



\$264,900
 MLS 6736038 Residential
 19067 US 71
 Park Rapids MN 56470



website: www.AffinityRealEstate.com | email: info@affinityrealestate.com | office: 218-237-3333 | fax: 218-237-3377



\$264,900
MLS 6736038 Residential
19067 US 71
Park Rapids MN 56470